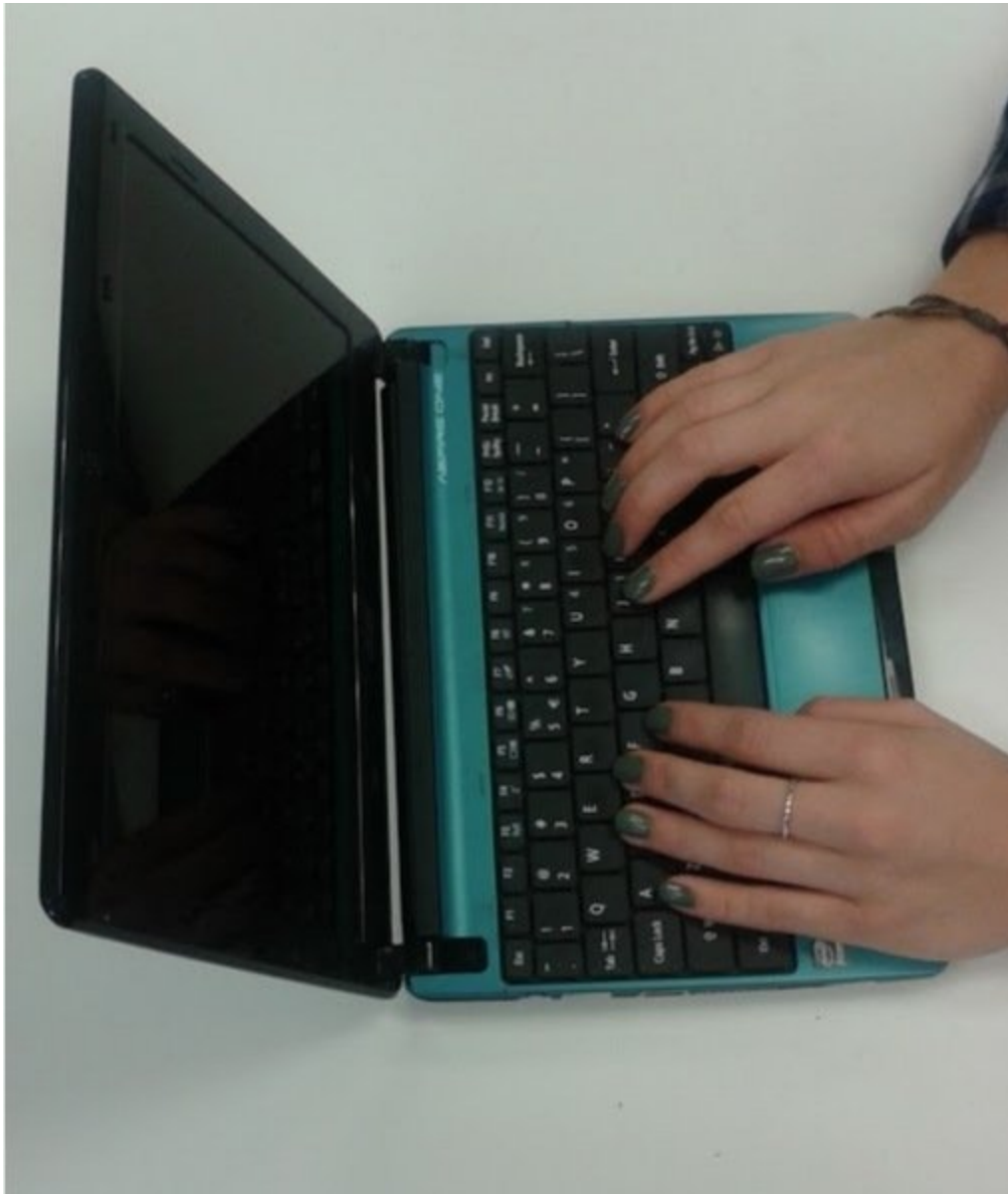




Acer Aspire One D270 Hard Drive Removal

We will be explaining how to remove the hard drive.

Written By: Maggie Zhelesnik



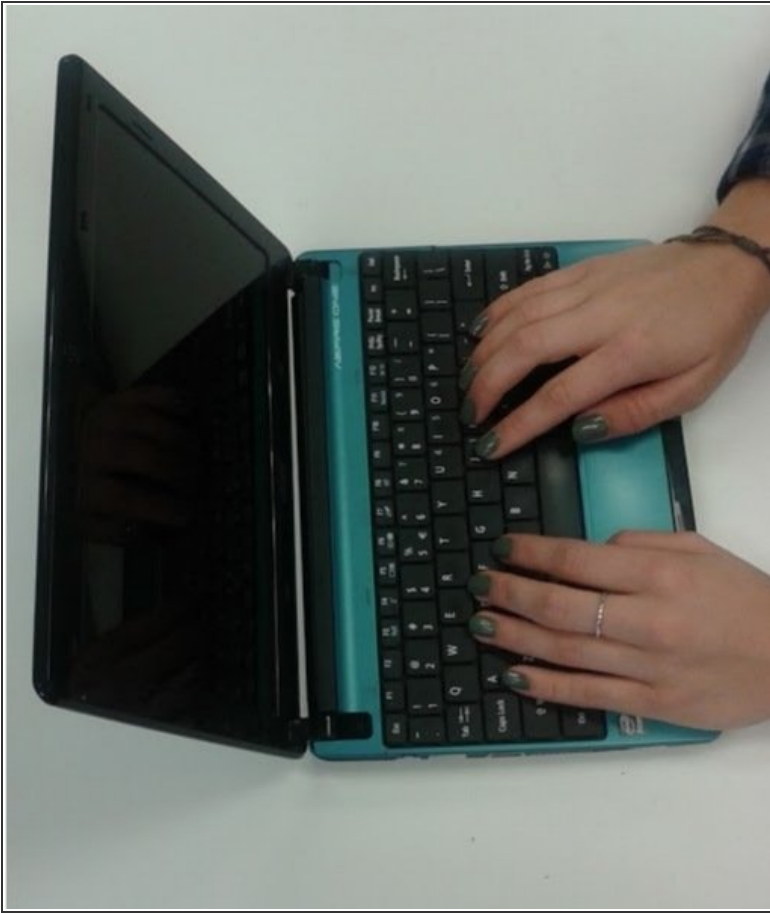
INTRODUCTION

Step-by-step instructions on how to remove a hard drive from an Acer Aspire One D270 computer.

TOOLS:

- [Anti-Static Wrist Strap](#) (1)
 - [iFixit Opening Tools](#) (1)
 - [JIS #1](#) (1)
-

Step 1 — Acer Aspire One D270 Hard Drive Removal



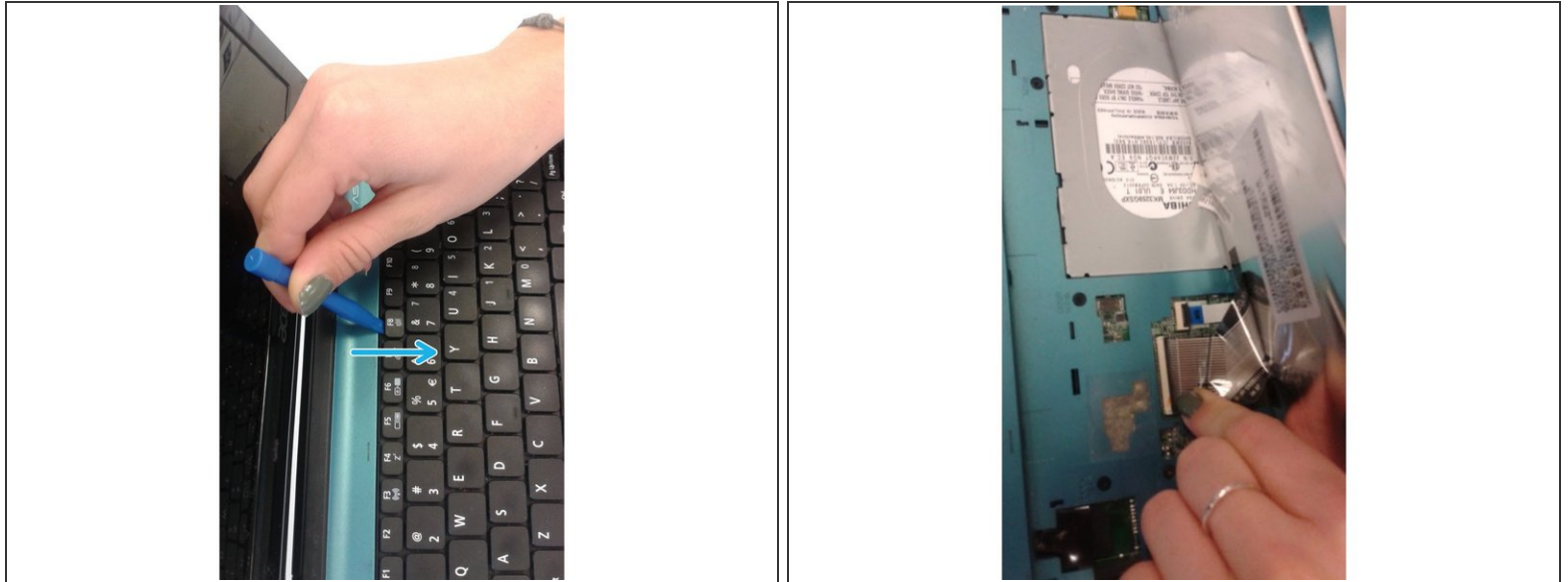
- Find a clean and flat surface to work on. Turn off the system by pressing and holding the power button.
- Disconnect power cord and network cable by gripping the plug and pulling straight from the socket.
- ⚠ Put on antistatic wrist strap and ground yourself by attaching the clip to an unpainted piece of metal that is touching the ground, such as a desk.


Step 2



- To remove the battery, turn the system with the top down and the battery facing up and away from you.
- Slide the battery lock/unlock button to unlock, by pressing down on the tabs and sliding the lock outwards.
- Push the battery release button and slide the battery out and off the system.

Step 3



- To remove the keyboard, turn the system right side up.
 - Unlock the latch above the F8 key at the top of the keyboard by prying up towards you with a plastic opening tool. Continue along the top of the keyboard and unlock the remaining 4 latches.
-  Note, the keyboard will flex when you pry on it, you are not breaking it.
- Lift the keyboard out from the top, until you can see the keyboard FPC (Flexible Printed Circuit) cable.
 - Carefully pull out the keyboard cable. *Note: If you are not sure you will be able to get the cable back in the correct way, mark the cable and the socket with a sharpie.*
 - Set the keyboard down in a clean flat space.

Step 4

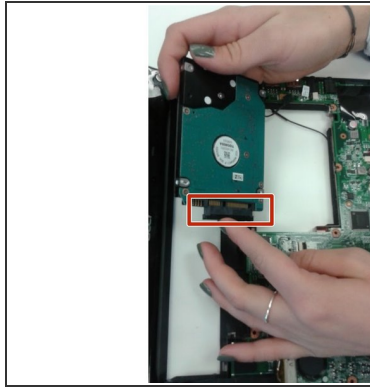


- To remove the base cover, remove all the screws from under keyboard using a J1 Phillips head screwdriver. There are 13 screws.

! Note, ten of the screws are size M2x8 and three are size M2x4, remember where they go.

- Flip the system over.
- Press down on the tab labeled door release until it releases. The tab is located on the lower right side of the system.
- Remove the base cover by removing the three screw opposite of the battery side.

Step 5



- Flip the device back over and then locate the hard drive. It is the large silver rectangular piece with a label on it.
- Pull the hard drive up from the end opposite the FPC cable and out to the right.
- Disconnect the hard drive FPC cable from the mainboard.
- Place the hard drive on a clean, dry, flat surface.

To reassemble your device, follow these instructions in reverse order.