



HP ElitePad 900 Front Panel Assembly Replacement

Remove the front panel assembly in your HP ElitePad 900.

Written By: Kyle Marques



INTRODUCTION

Use this guide to remove the front panel assembly in your HP ElitePad 900.

TOOLS:

- [Suction Handle](#) (1)
 - [iFixit Opening Tools](#) (1)
 - [Phillips #000 Screwdriver](#) (1)
-

Step 1 — Front Panel Assembly



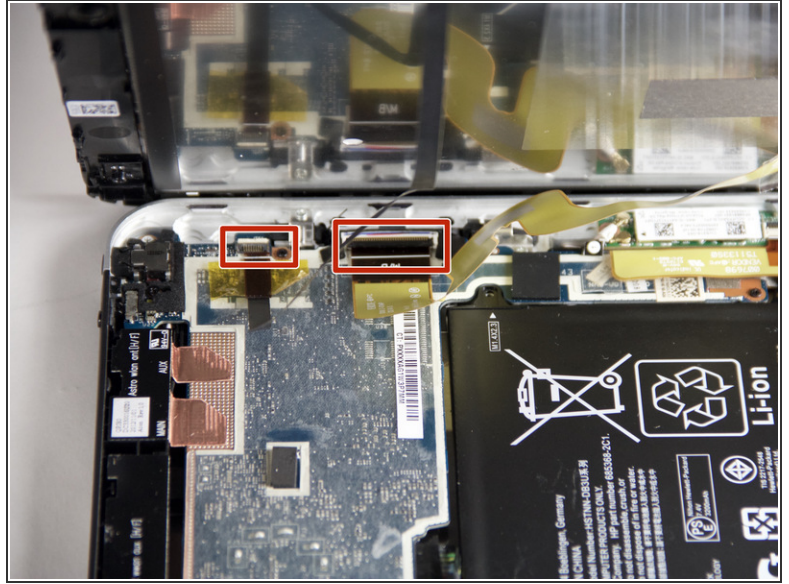
- Unscrew the two 2.8mm Phillips #000 screws near the power connector.

Step 2



- Use a suction cup to pull the display assembly up.

Step 3



- Use the tip of a spudger to disconnect the two display [ZIF connectors](#).

To reassemble your device, follow these instructions in reverse order.

This document was last generated on 2017-08-13 05:06:41 PM.