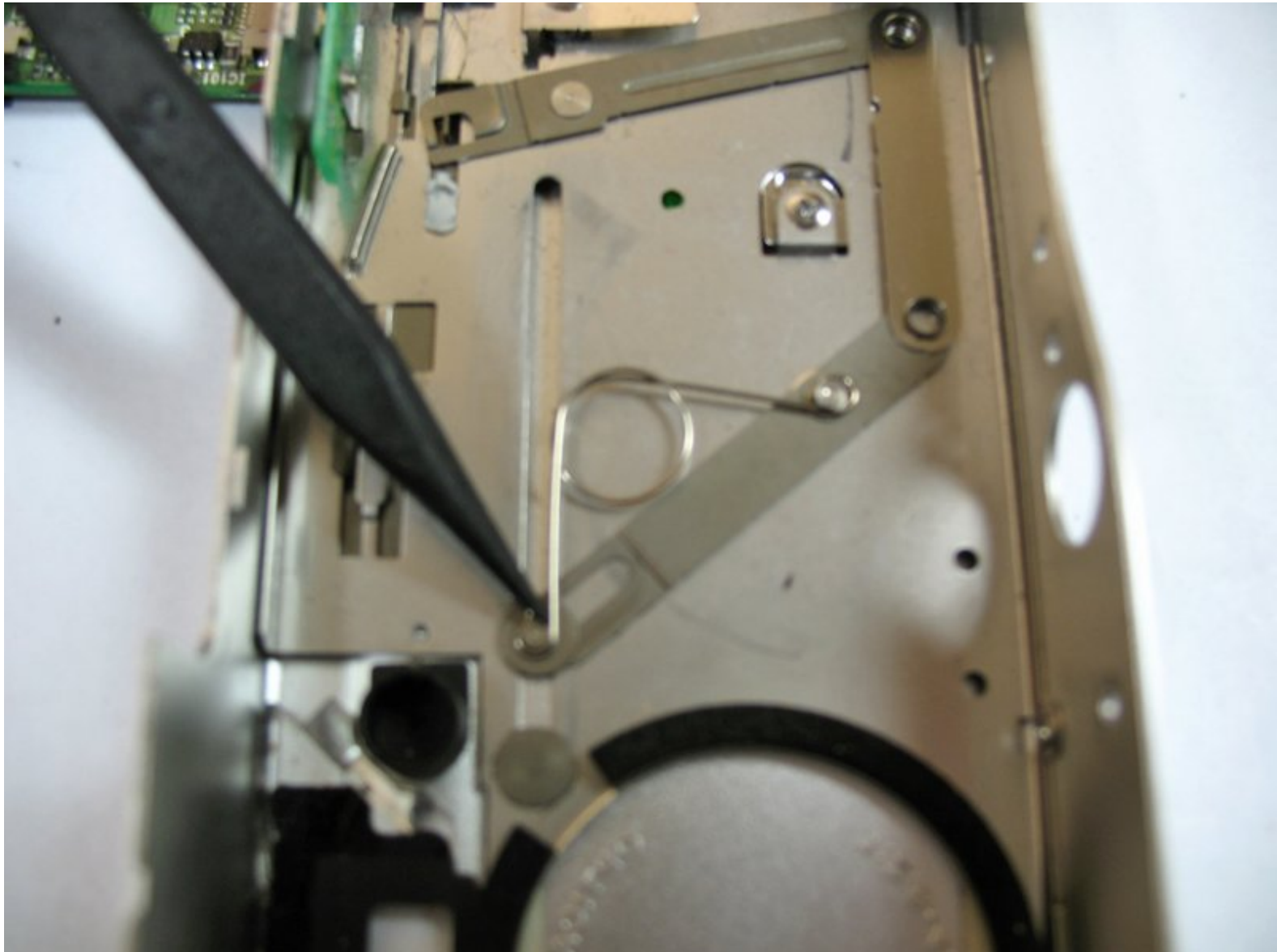




Panasonic Lumix DMC-F7 Fixing the Lens Apparatus Replacement

Guide to checking and repairing the Lens Apparatus on a Panasonic Lumix DMC-F7.

Written By: Alex Penman



INTRODUCTION

Fixing the lens apparatus on your camera.

TOOLS:

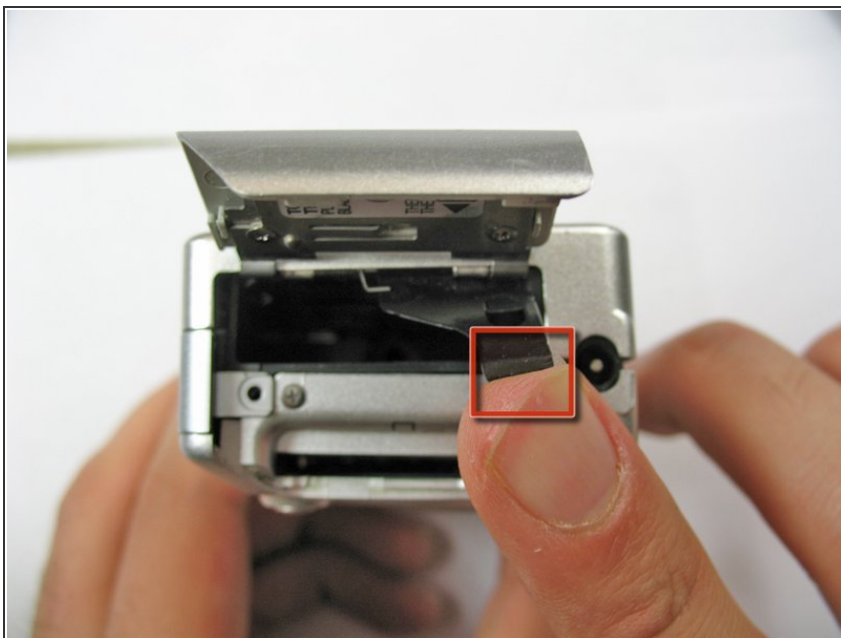
- [Phillips #00 Screwdriver](#) (1)
 - [Spudger](#) (1)
-

Step 1 — Battery



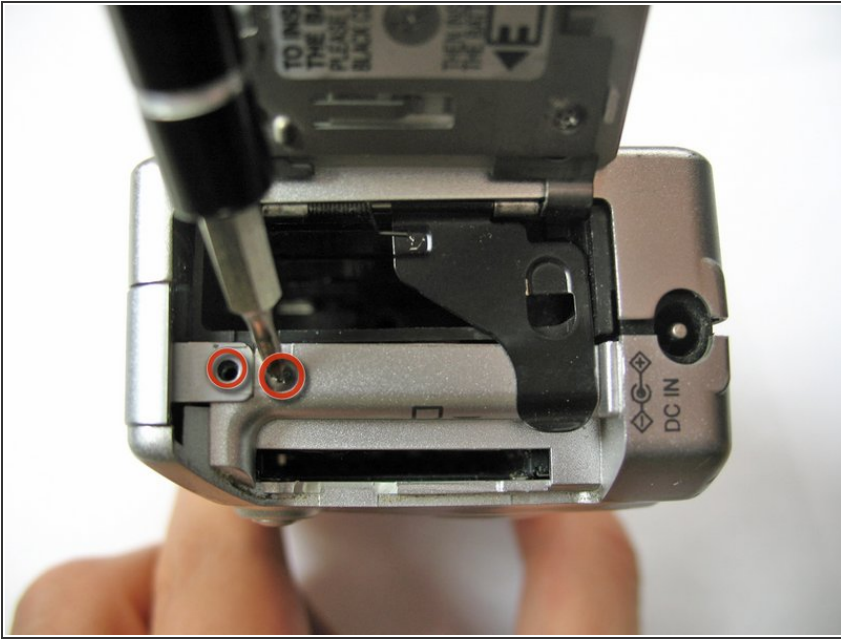
- Slide the lock into the unlocked position to the right.
- ⓘ Use your finger to slide battery hatch towards the arrow sign.
- ⓘ Both battery and memory card should now be visible.

Step 2



- Open battery hatch and the black cover to expose the battery compartment.
- ⓘ The camera used to create these repair guides did not have a battery and memory card.
- Pull the battery out and replace with a new one.
- ☑ When putting the battery back in, make sure it is in the same orientation as before.
- Close the battery compartment, and make sure the lock is in the locked position.

Step 3 — Replacing Back Case



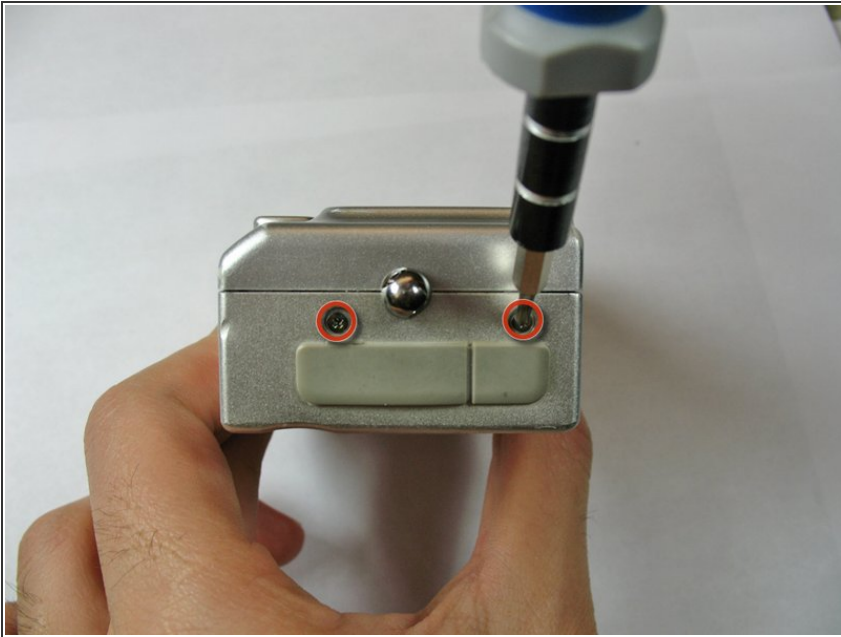
- Remove the two 2.8 mm Phillips screws as shown in picture.

Step 4



- Using a Phillips Screw Driver, remove the three 2.8 mm Phillips screws on the bottom of the camera as shown in picture.

Step 5



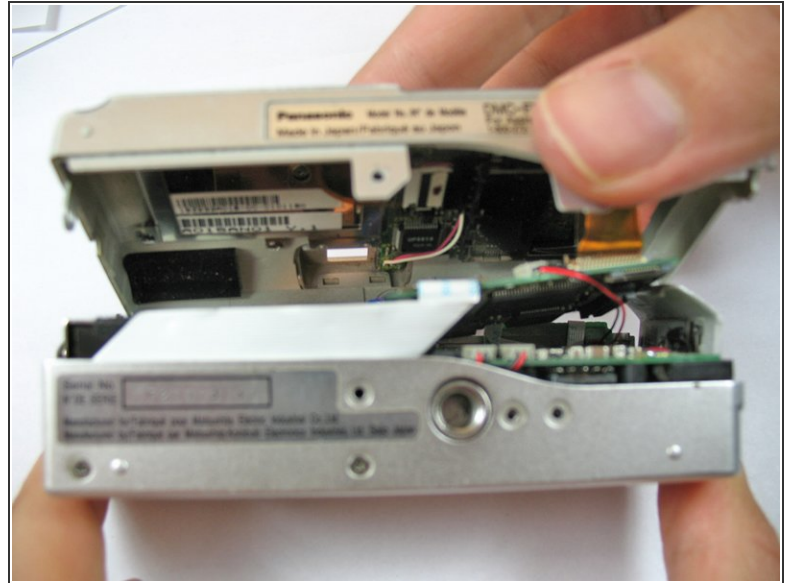
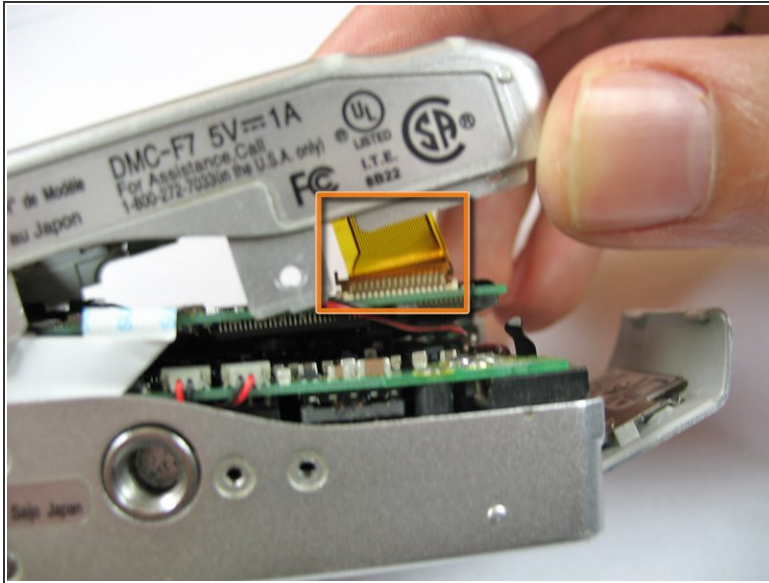
- Remove the two 2.8 mm Phillips screws on the side of the camera as shown in picture.


Step 6



- Use a spudger to pry open the case from all sides.

Step 7



 Beware of the ribbon cable that is still attached when opening.

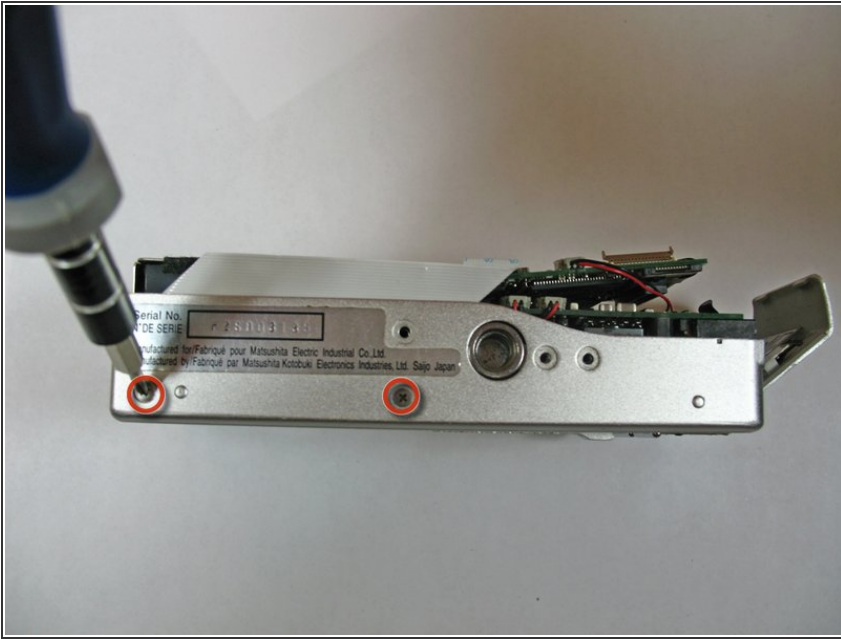
- Use your fingers to carefully pry off the back casing from the camera assembly.

Step 8



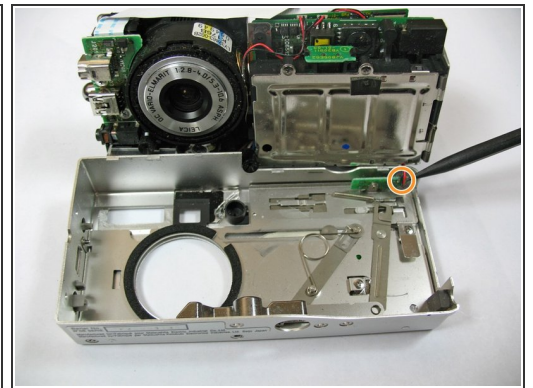
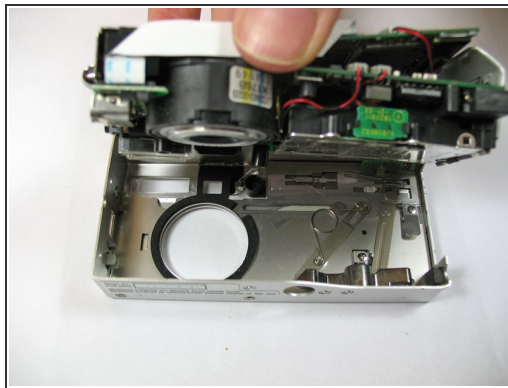
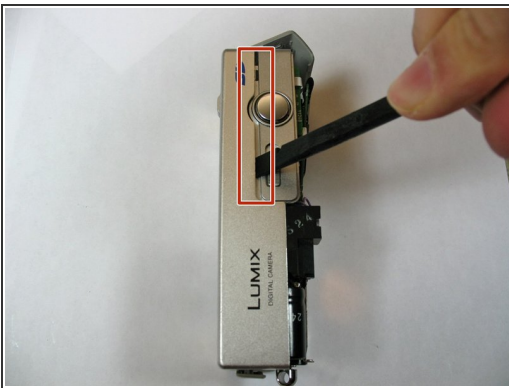
- Lay the camera on its front side. Then, use the Spudger to open the film strip locking mechanism and remove strip./**No edits necessary.**
- Hold down on the camera's metal casing with one hand. Using your other hand, completely lift the back case off the rest of the camera, making sure the film strip separates./**Make a picture for this step.**

Step 9 — Replacing the Front Case



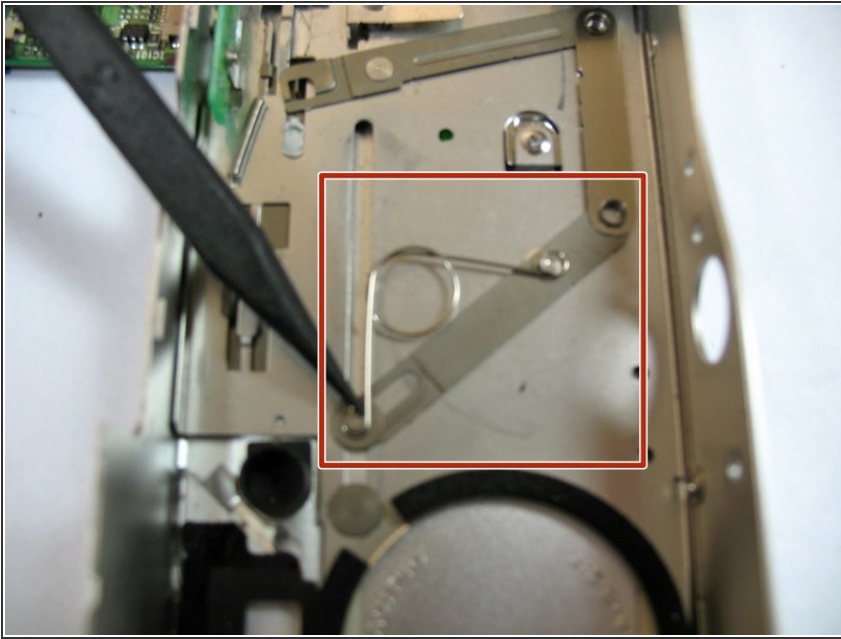
- Remove the two remaining 2.8 mm Phillips screws on the bottom of the camera.
- ⓘ The other three screws shown in picture were removed to take off the back case.

Step 10



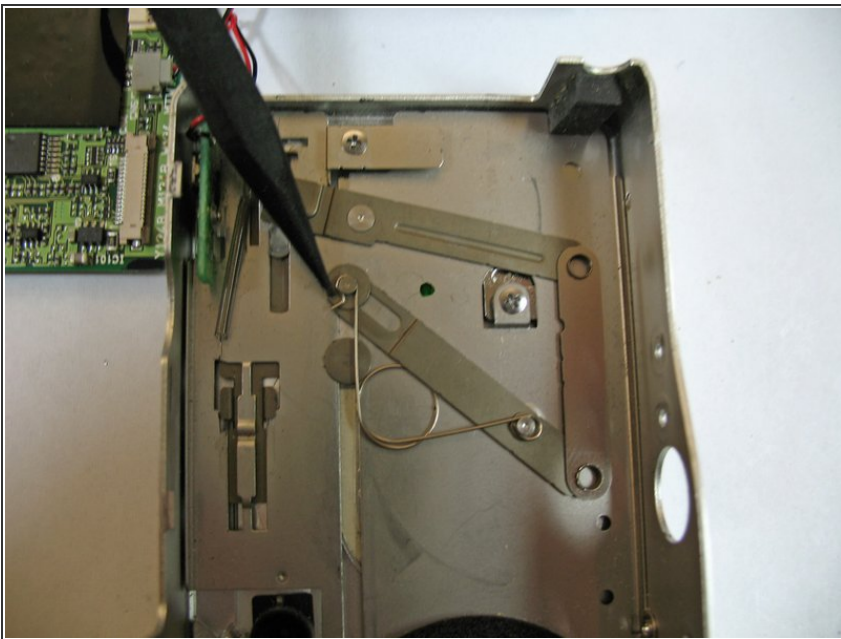
- Using Spudger tool, pry the front case from the camera's components.
- Use your fingers to carefully pull the back case from the front case.
- Cut the black and red wires connecting front case to the body of the camera.
- Be careful to ensure that nothing gets caught, and separate the front case from the camera.
- ☞ To put the new front case back on, solder the wires of the new front case to the components of the camera.

Step 11 — Fixing the Lens Apparatus



- Check the "V" shaped spring to see if it is connected.

Step 12



- Manually move the lens apparatus from the inside to shown position.
- Check to see if the spring is aligned correctly and the lens opens.
- If not, you will need to take out the spring and place it into the proper position, or get a new spring all together.

To reassemble your device, follow these instructions in reverse order.