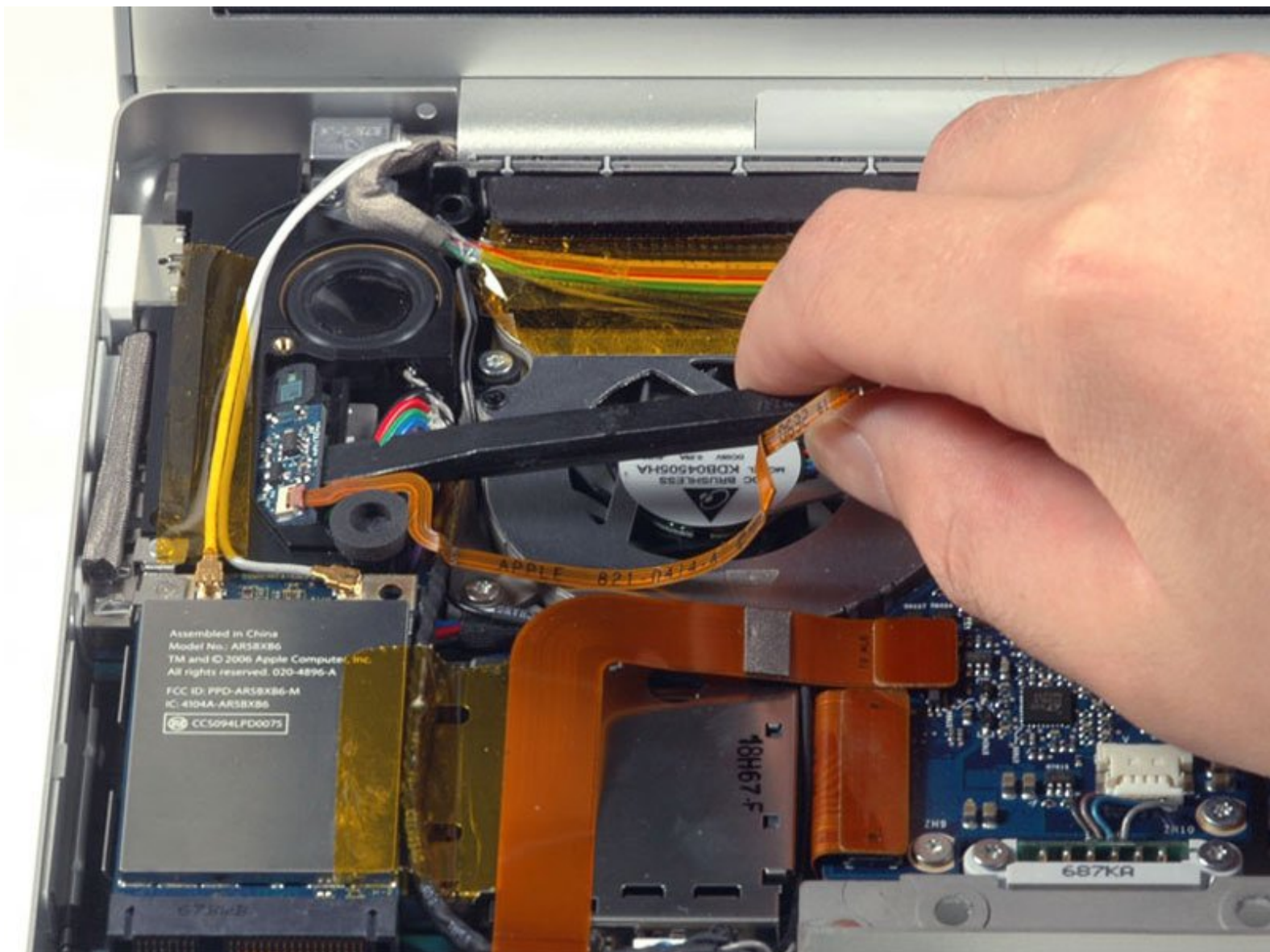




MacBook Pro 15" Core Duo Model A1150 Left Ambient Light Sensor Replacement

Written By: iRobot



INTRODUCTION

This detects the light level in the room to adjust the backlit keyboard.



TOOLS:

- [Phillips #00 Screwdriver](#) (1)
- [Spudger](#) (1)
- [T6 Torx Screwdriver](#) (1)



PARTS:

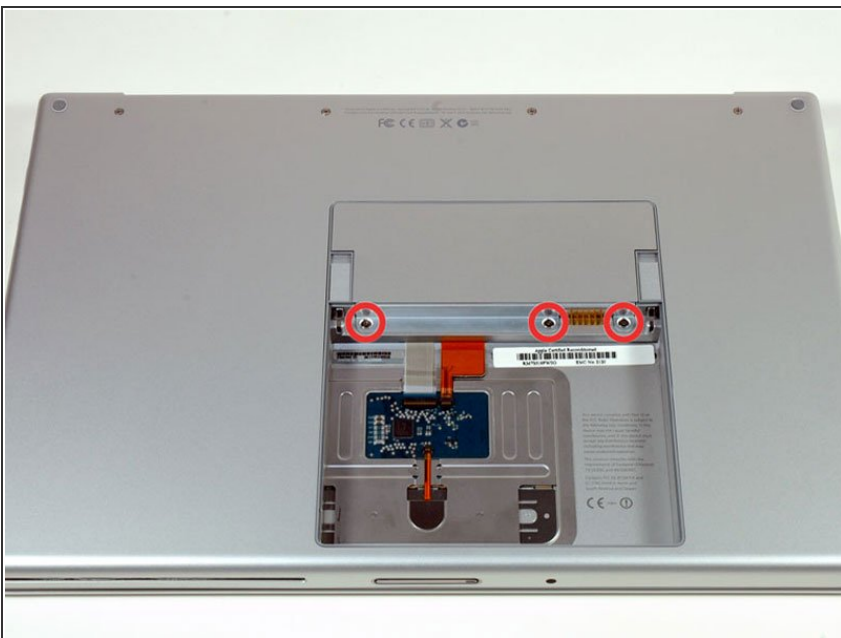
- [MacBook Pro 15" \(Model A1150\) Left Ambient Light Sensor Cable](#) (1)
- [MacBook Pro 15" \(Model A1150\) Left Ambient Light Sensor](#) (1)

Step 1 — Battery



- Use your fingers to push both battery release tabs away from the battery, and lift the battery out of the computer.

Step 2 — Memory Door



- Remove the three identical Phillips screws from the memory door.
- ☑ Make sure to record which sets of screws came from where. This will help when re-assembling.

Step 3



- Lift the memory door up enough to get a grip on it, and slide it toward you, pulling it away from the casing.

Step 4 — Upper Case



- Remove the two Phillips screws in the battery compartment near the latch.

Step 5



- Remove the following 6 screws:
 - Two 10 mm T6 Torx screws on either side of the RAM slot.
 - Four 14.5 mm Phillips screws along the hinge.

Step 6



- Remove the four Phillips screws on the port side of the computer.

Step 7



- Rotate the computer 90 degrees and remove the two Phillips screws from the rear of the computer.

Step 8



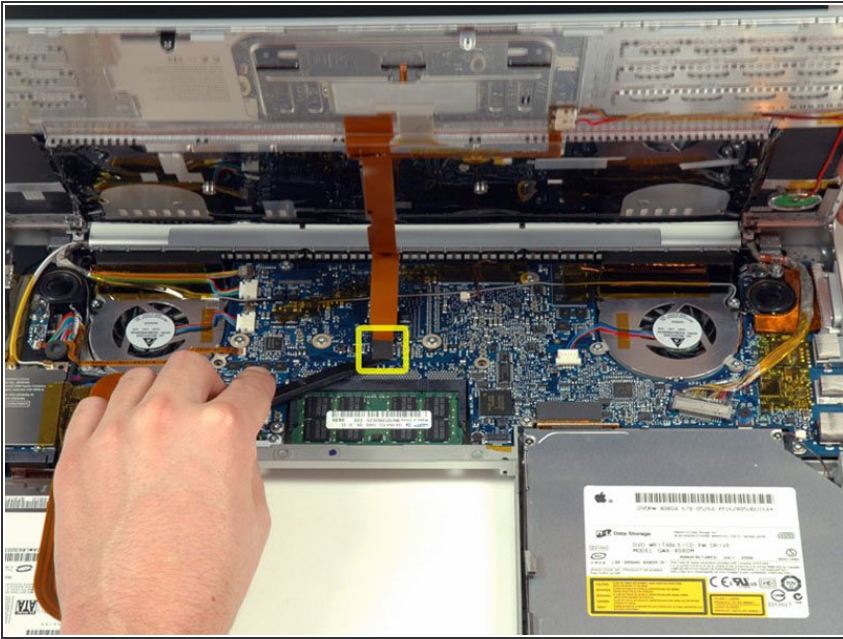
- Rotate the computer 90 degrees again and remove the four Phillips screws from the side of the computer.

Step 9



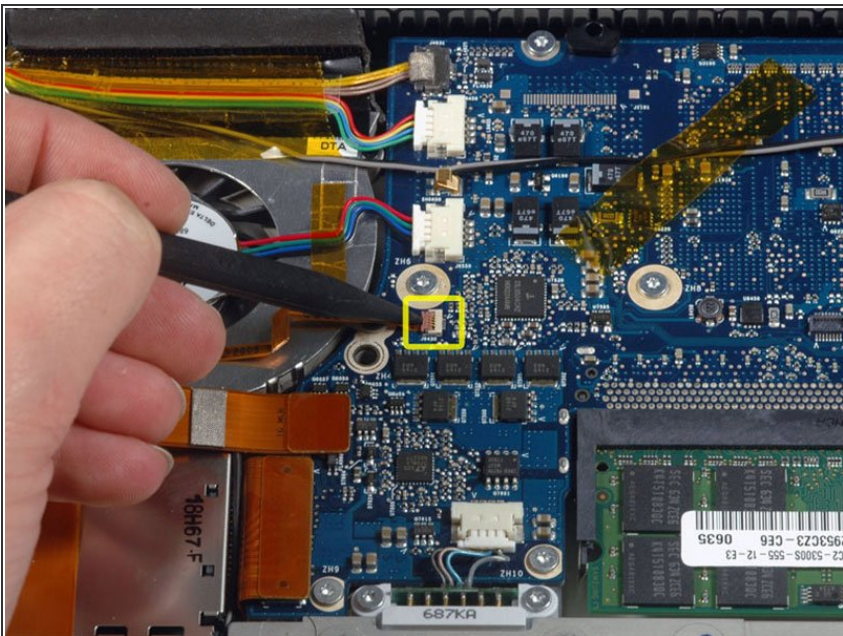
- ⓘ Do not yank the upper case off quickly. The case is attached to the logic board via a ribbon cable.
- Lift up at the rear of the case and work your fingers along the sides, freeing the case as you go. Once you have freed the sides, you may need to rock the case up and down to free the front of the upper case. This stage can be quite tricky. Over the DVD reader are 4 tabs set back which pull out vertically.
- Note that the two small tongues on the left hand front of the upper case may bend while you remove the upper case. When re-installing, you may need to bend them back to fit in the grooves in the lower case.

Step 10



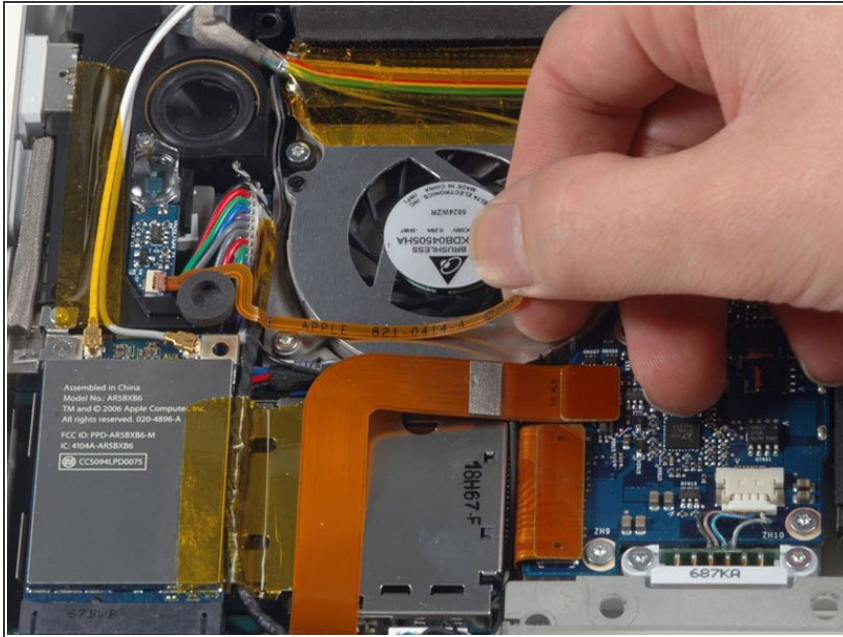
- Disconnect the trackpad and keyboard ribbon cable from the logic board, removing tape as necessary.
- Remove the upper case.

Step 11 — Left Ambient Light Sensor



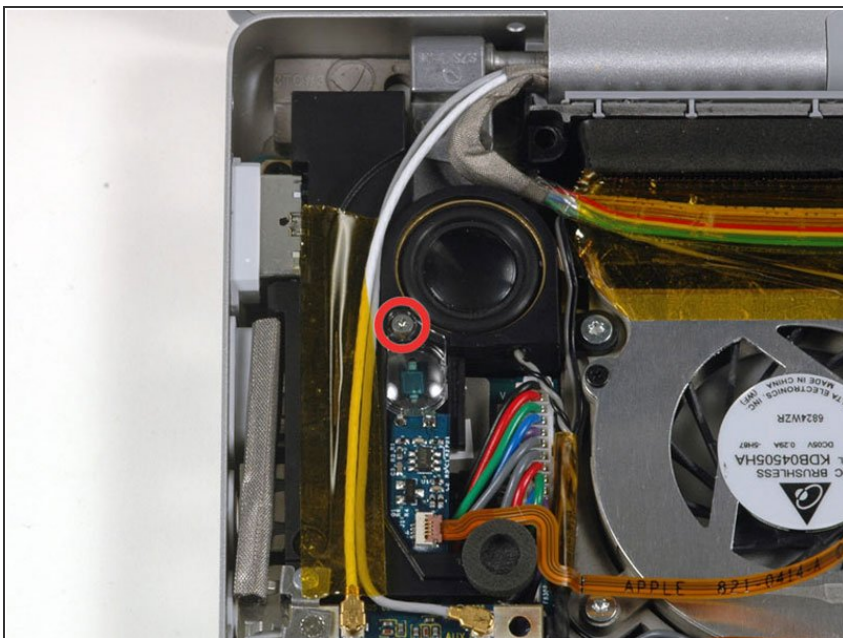
- Use a spudger to flip up the brown plastic flap securing the left ambient light sensor cable to the logic board.
- Slide the left ambient light sensor cable to the left and out of its connector.

Step 12



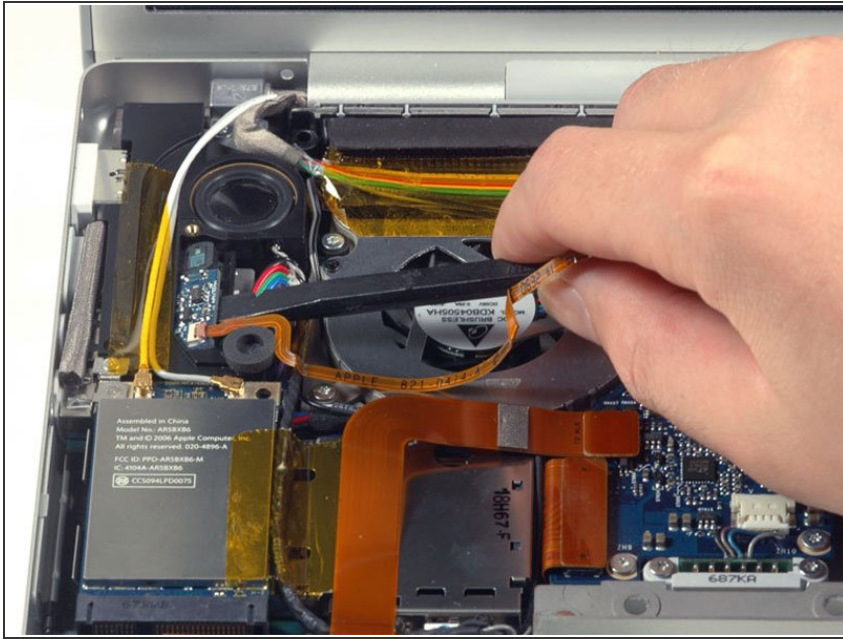
- Peel up the left ambient light sensor cable from above the left fan.

Step 13



- Remove the single silver Phillips screw securing the clear plastic shield over the left ambient light sensor.
- Lift the clear plastic shield off the left ambient light sensor.

Step 14



- Use a spudger to pry the left ambient light sensor board out of its housing on the left speaker.
- Lift the left ambient light sensor board out of the computer.

To reassemble your device, follow these instructions in reverse order.