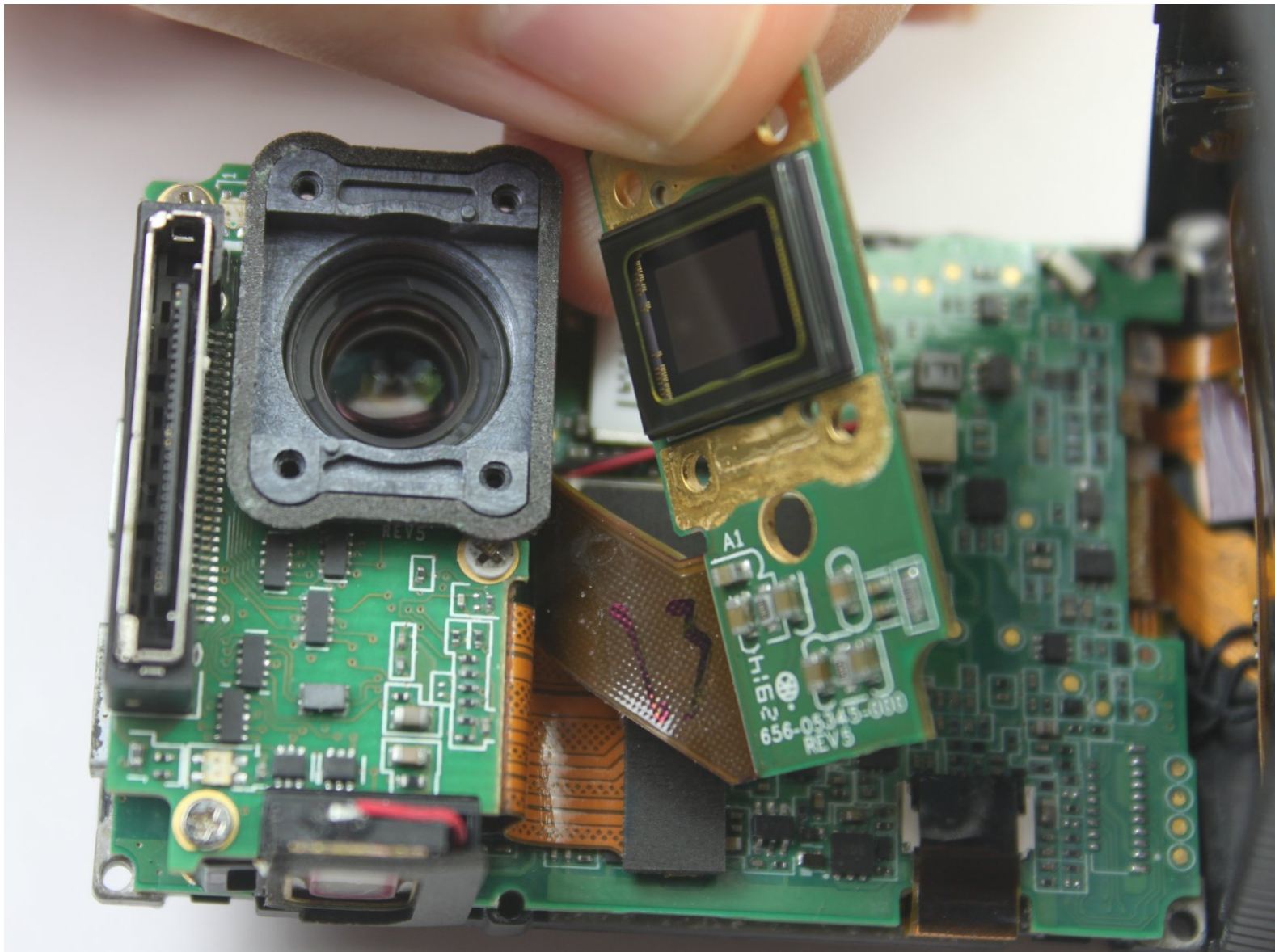




# GoPro Hero4 Silver Image Sensor Replacement

How to access and change the image sensor of the GoPro Hero4 Silver.

Written By: Bradley Welsh



## INTRODUCTION

The image sensor is an optical device used to capture light and store the visual data into digital storage. This guide will help take apart the camera and replace the sensor.

---

### TOOLS:

- [iFixit Opening Tools](#) (1)
- [Magnetic Project Mat](#) (1)
- [Phillips #000 Screwdriver](#) (1)
- [Metal Spudger](#) (1)

### PARTS:

- [GoPro Hero4 Image Sensor](#) (1)

## Step 1 — Front Panel



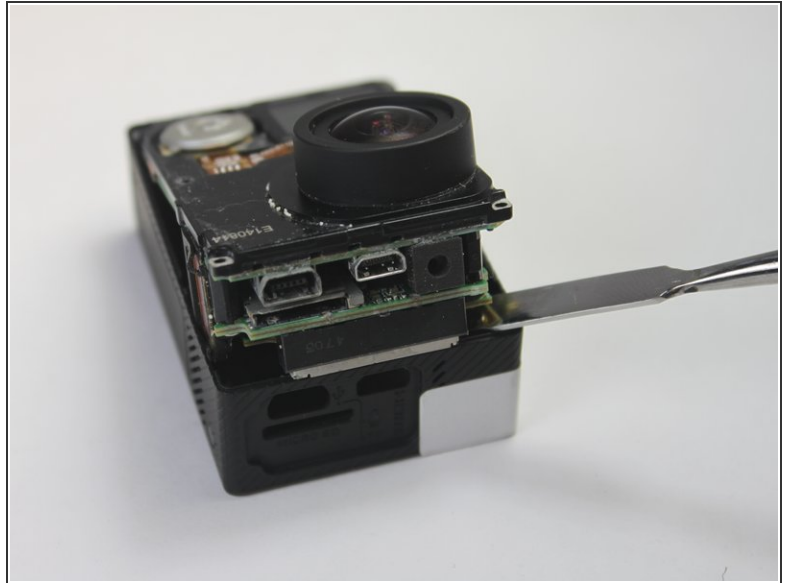
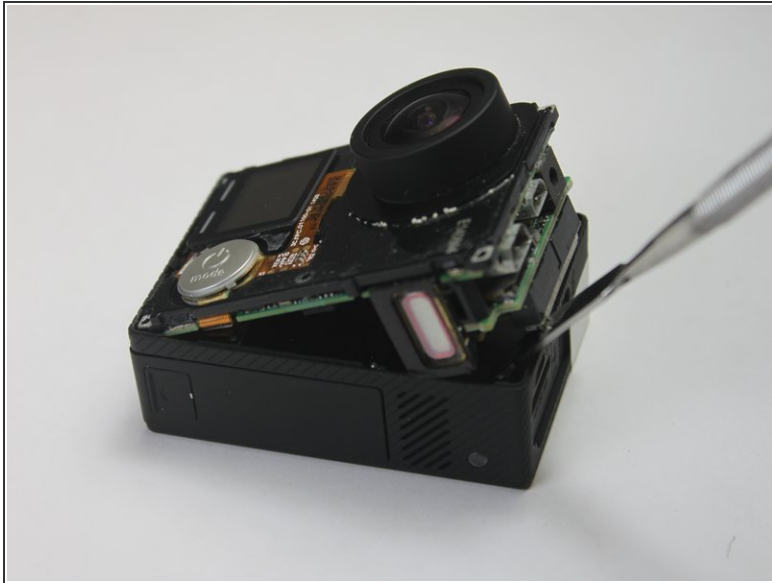
- Start by removing the silver plastic face from the camera using a plastic opening tool. Insert the plastic opening tool into the middle of each edge and lift up the tabs that keep the camera face on.
- The seven plastic tab locations are marked in red.
- ⓘ Try using the plastic opening tool before switching to the metal spudger. We tried using the plastic opening tool to pry the camera face off, but found that it did not give us enough leverage.
- ⚠ There may be glue holding the camera face on to the housing. Be careful not to flex the camera face too much, or it will crack.

## Step 2 — Image Sensor



- Remove the three 8 mm Phillips #000 screws on each corner of the camera.
- Remove the single 4 mm Phillips #000 screw on the bottom left corner of the camera.

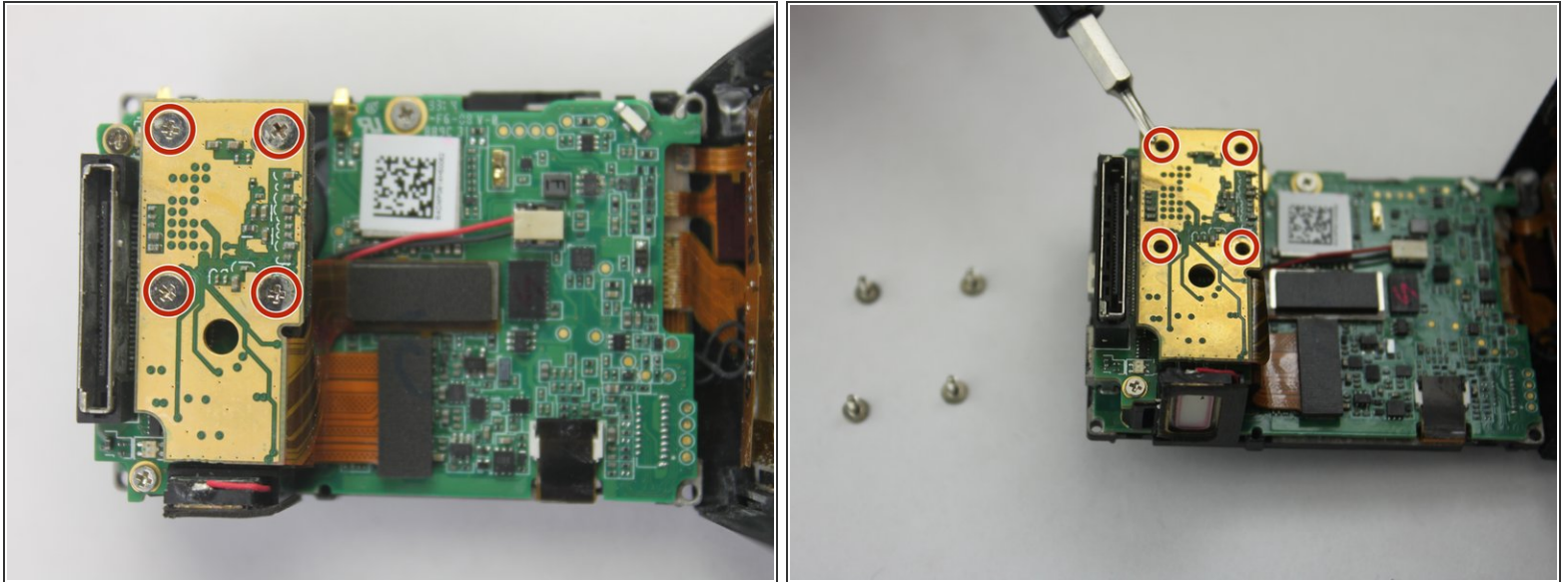
### Step 3



- To remove the motherboard assembly from the camera casing, use the plastic opening tool on the lens side of the camera to pry the motherboard assembly out of the camera housing.
- To avoid breaking the plastic on the lens side of the camera (see photo), pry along the edges near the corners.
- ⓘ Try using the plastic opening tool before switching to the metal spudger. We tried using the plastic opening tool to pry the motherboard assembly open, but found that it did not give us enough leverage.
- ⚠ Do not try to pry near the power button side of the camera. This will break important cables inside.

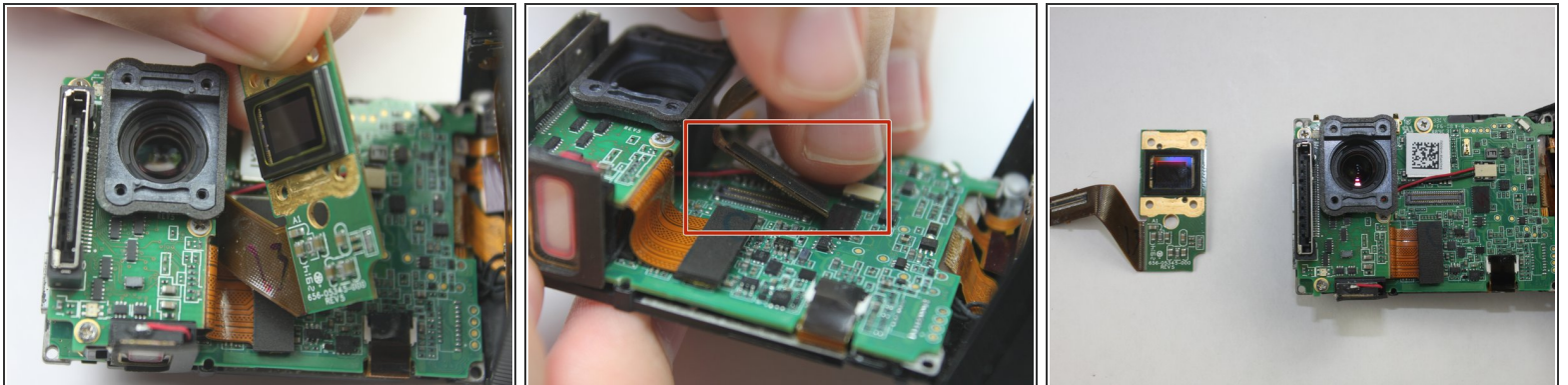


## Step 4



- Remove the four 8 mm Phillips #000 screws securing the camera sensor assembly.

## Step 5



- To remove the sensor assembly, simply peel off the lens towards the attached ribbon cable.
- The sensor has ribbon cables running to the motherboard via a black rectangular connector.
- To remove the sensor, use the spudger to pry up each side, Then, lift the connector straight up from its socket.
- With the old camera sensor assembly removed, you can now replace it with a new sensor.

To reassemble your device, follow these instructions in reverse order.