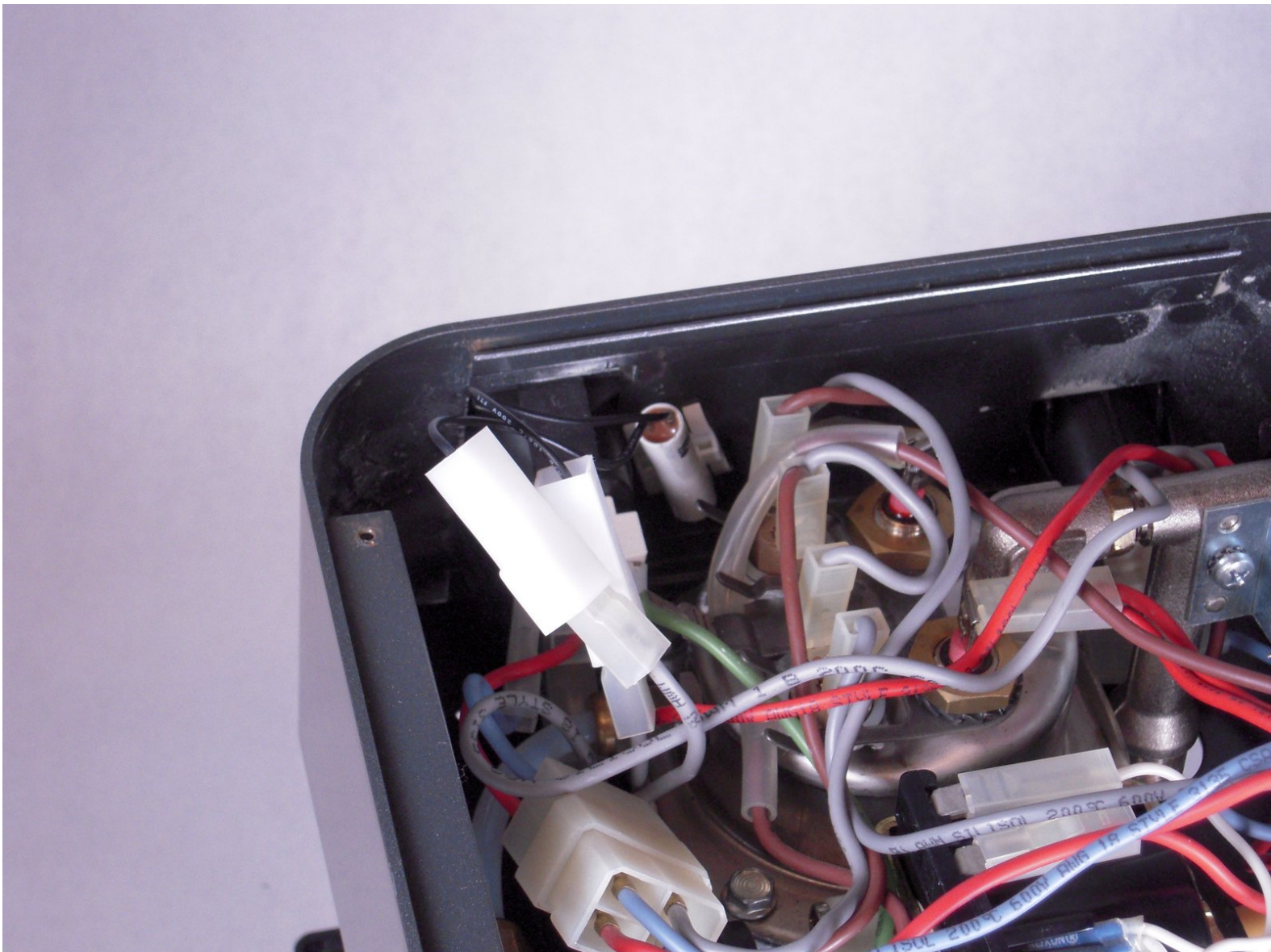




Starbucks Barista Ready Light Replacement

Shows how to disassemble and replace the ready light.

Written By: David



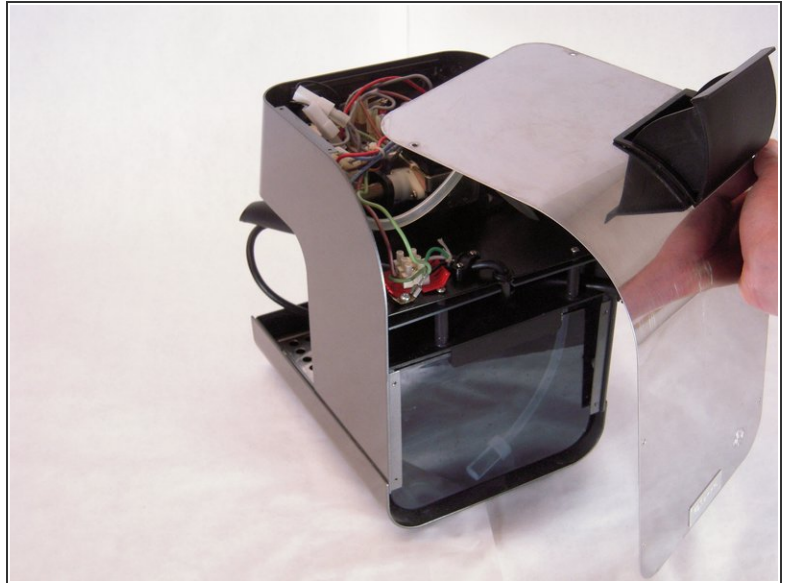
INTRODUCTION

The ready light is a simple LED that shows when the Barista has heated up to its needed temperature. This LED may burn out or its connectors may loosen.

TOOLS:

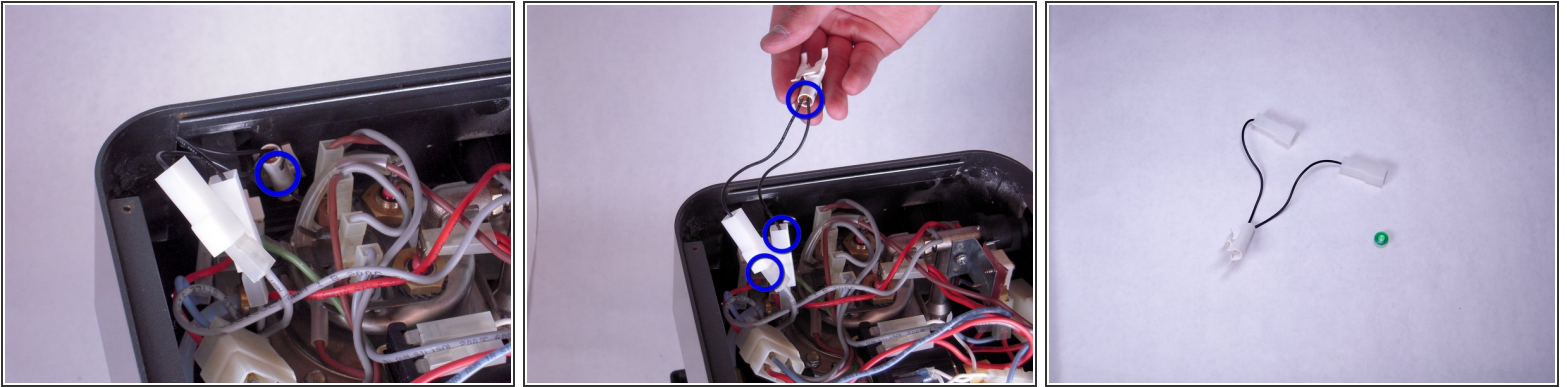
- [Phillips #1 Screwdriver](#) (1)
-

Step 1 — Ready Light



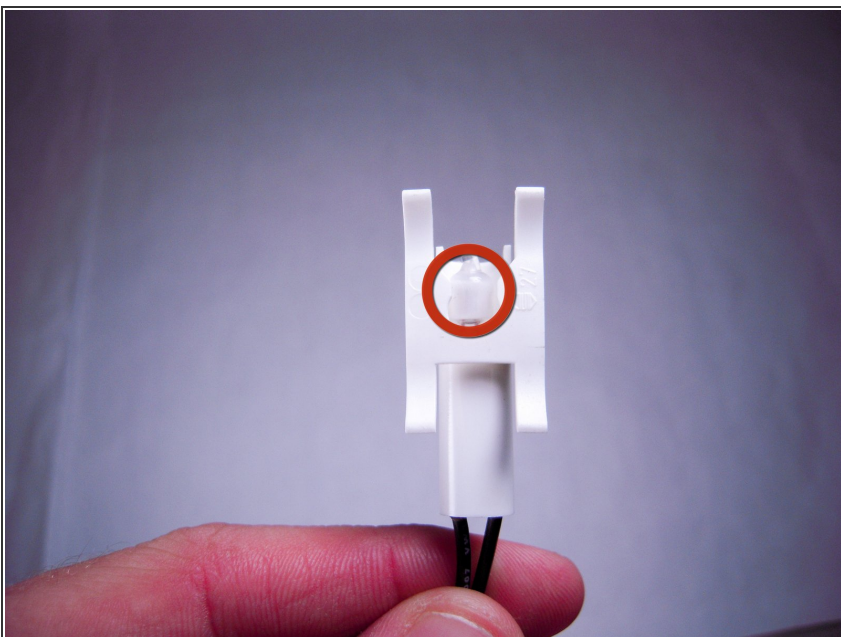
- Unscrew the 6 screws from the back panel.
- Remove the back panel.

Step 2



- Locate the ready light.
- Gently push the fixture against the Barista wall.
- Pull the fixture straight up to release it.
 - Note: The fixture works as a spring.
 - Note: The green cover from the front panel will "pop" off. Do not lose the green cover.
- Disconnect the wire lead connectors.
- Remove the ready light unit (fixture).

Step 3



- Replace the old LED with a new LED.
- To put back, match the green cover to the slot of the LED fixture, then slide the fixture down against the barista wall.

To reassemble your device, follow these instructions in reverse order.

This document was last generated on 2019-07-11 06:58:02 AM.