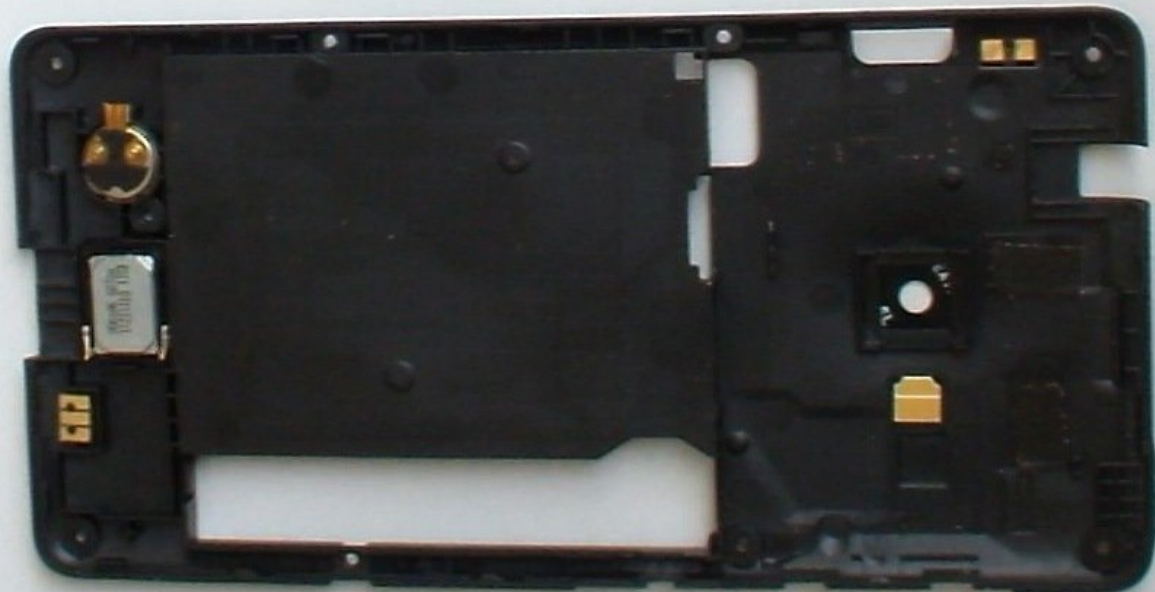




Microsoft Lumia 535 Back Cover / Rear Case Replacement

Microsoft Lumia 535 Back Cover Replacement

Written By: ZFix



INTRODUCTION

Microsoft Lumia 535

RM-1090 / RM-1091/ RM-1089 / RM-1092

How to remove the back cover / bezel.

TOOLS:

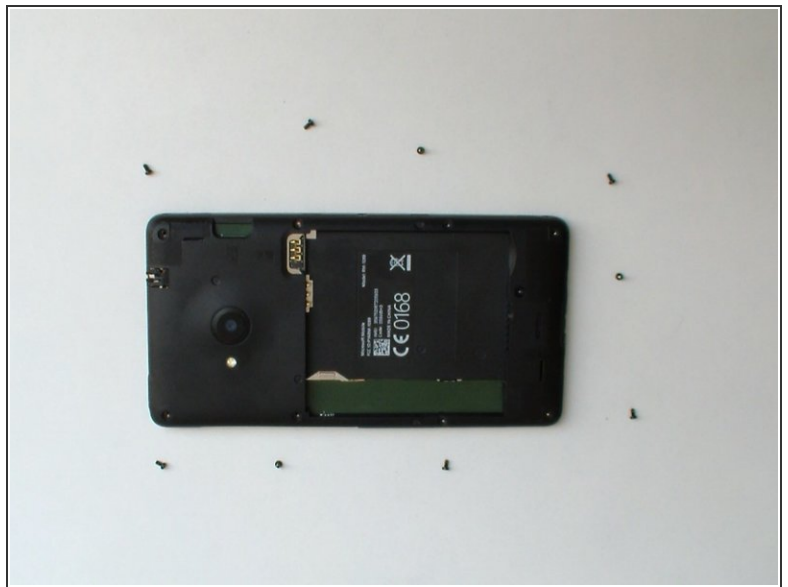
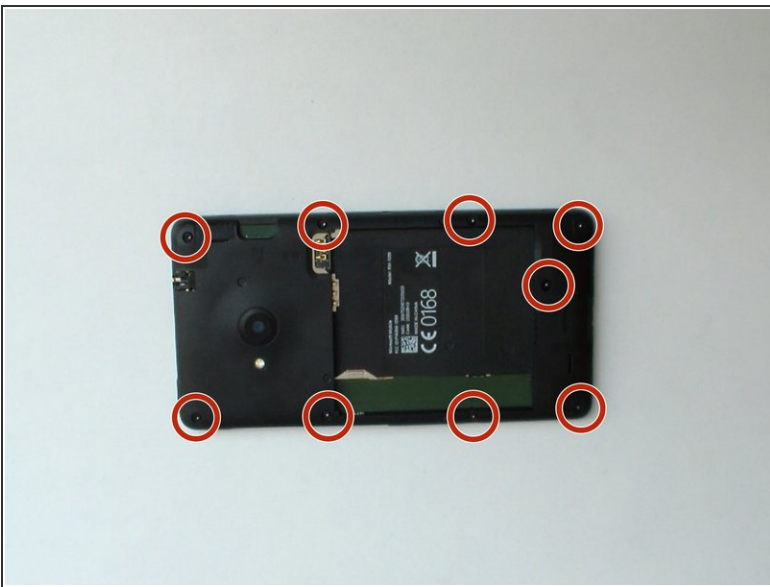
- [T4 Torx Screwdriver](#) (1)
 - [iFixit Opening Tools](#) (1)
 - [Plastic Cards](#) (1)
-

Step 1 — Back Cover / Rear Case



- Turn off the phone.
- Remove the battery and any SIM and memory cards.

Step 2



- With a screwdriver Torx T4 remove the 9x screws.

Step 3



- With a plastic opening tool separate the back cover from the middle frame.

To reassemble your device, follow these instructions in reverse order.