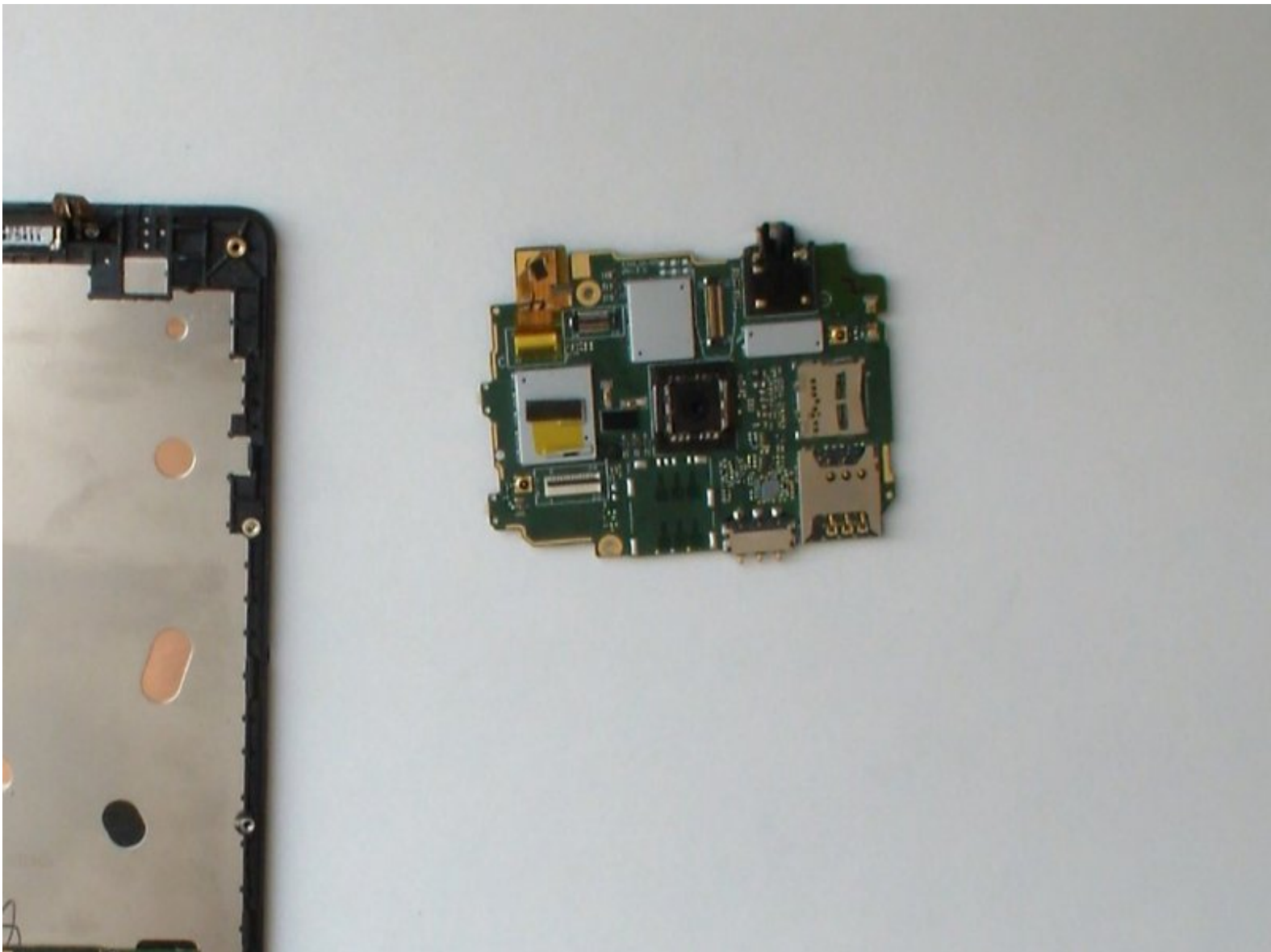




Microsoft Lumia 535 Logic board Replacement

Microsoft Lumia 535 Logic board Replacement

Written By: ZFix



INTRODUCTION

Microsoft Lumia 535

RM-1090 / RM-1091/ RM-1089 / RM-1092

How to disassemble and replace the Logic board.

[video: <https://www.youtube.com/watch?v=8M7kQp4Dpus>]

TOOLS:

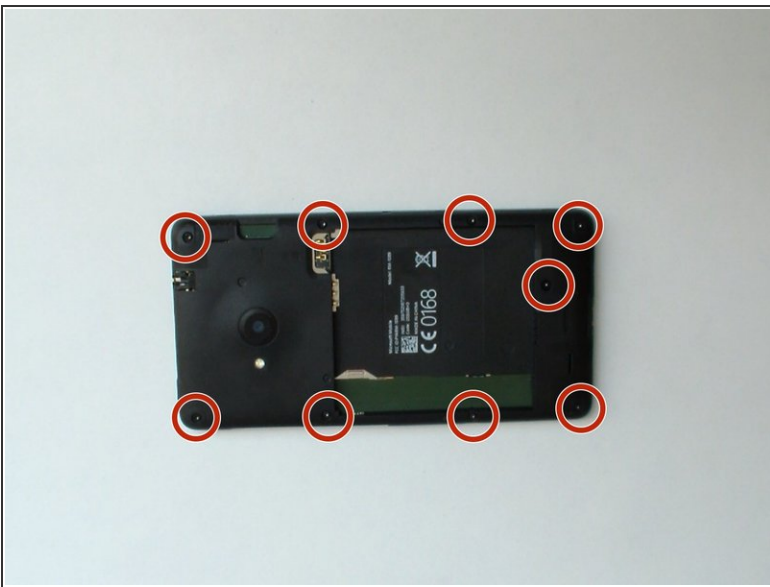
- [T4 Torx Screwdriver](#) (1)
 - [Tweezers](#) (1)
 - [iFixit Opening Tools](#) (1)
 - [Plastic Cards](#) (1)
-

Step 1 — Back Cover / Rear Case



- Turn off the phone.
- Remove the battery and any SIM and memory cards.

Step 2



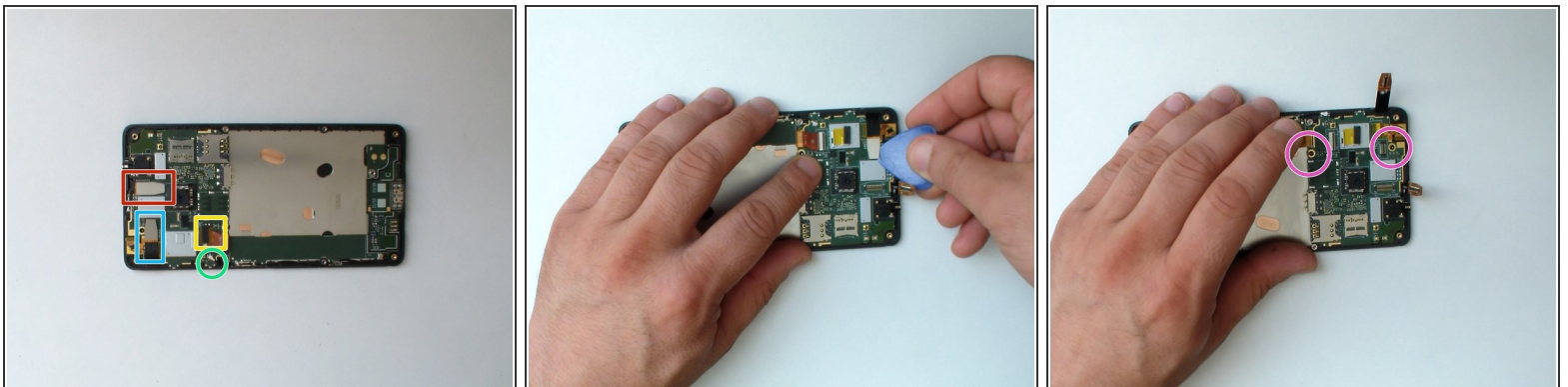
- With a screwdriver Torx T4 remove the 9x screws.

Step 3



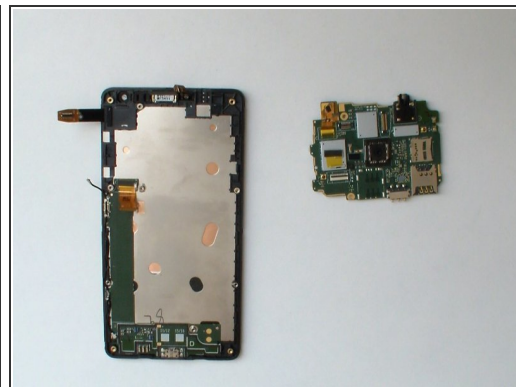
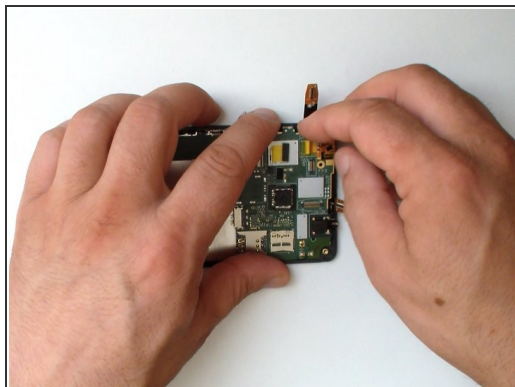
- With a plastic opening tool separate the back cover from the middle frame.

Step 4 — Logic board



- Disconnect:
 - Touch screen flex cable
 - LCD Display flex cable
 - Charging Dock board flex cable - remove the foam and tape, then flip up the black lock before easing out the flex.
 - Coaxial antenna cable - take your time here, be sure to pull the metal connector and not the cable or you risk pulling the cable from the connector.
- Remove the 2x Torx T4 screws.

Step 5



- Insert wisdom here.

To reassemble your device, follow these instructions in reverse order.