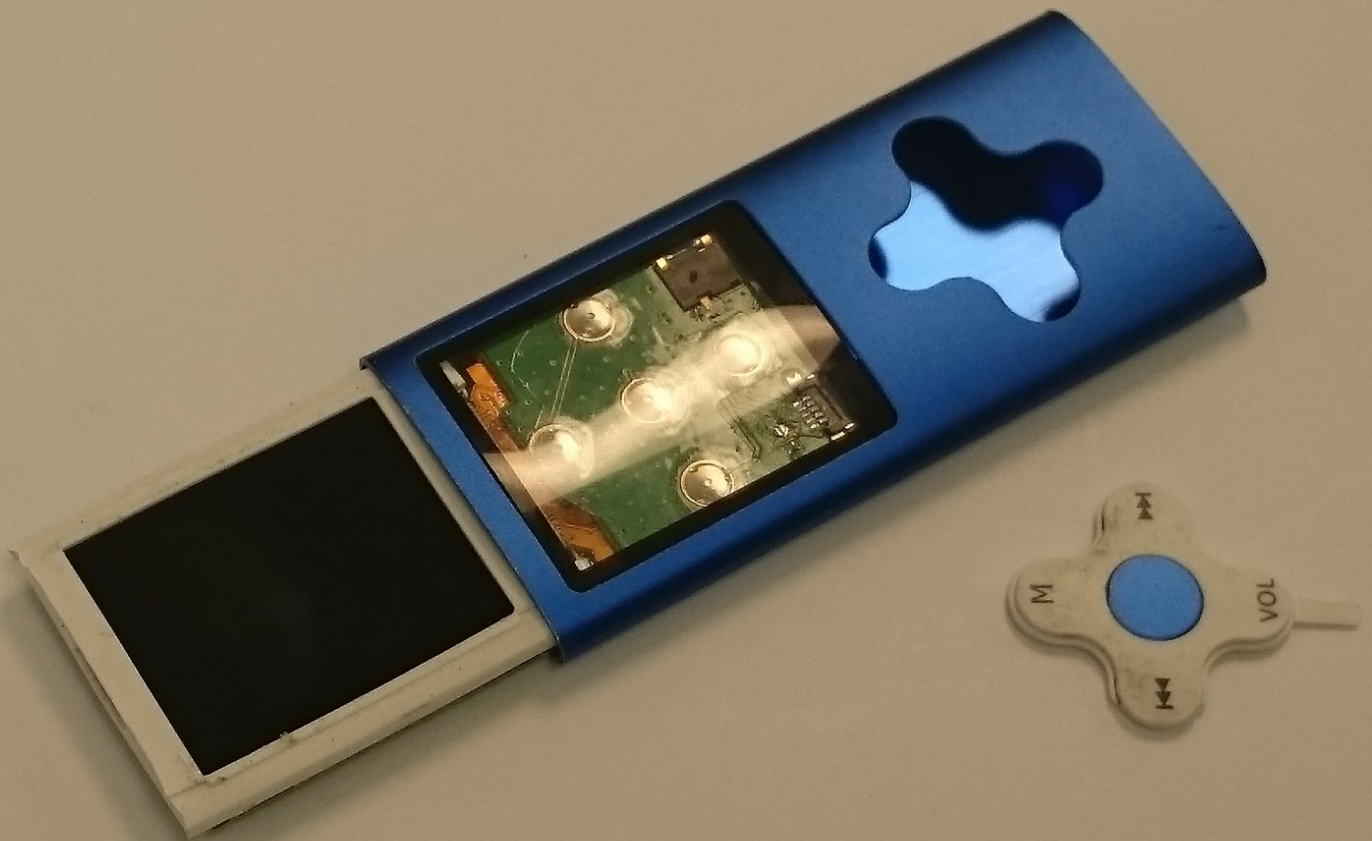




Eclipse 180BL Touch Pad Replacement

The touch pad features five buttons utilized to navigate the device. Replacement is extremely easy, and quick.

Written By: Thomas Schwarz



INTRODUCTION

If you have an unresponsive touch pad, sticking buttons, or just want a fresh touch pad in your device, this guide is for you!

TOOLS:

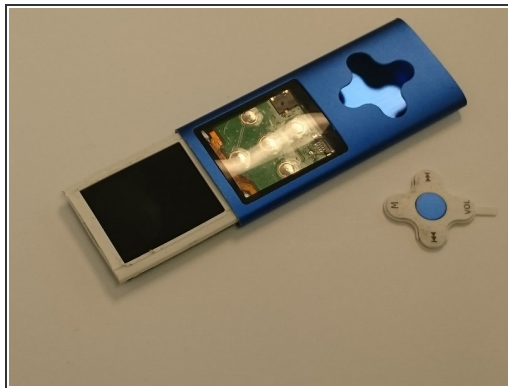
- [Screwdriver](#) (1)
 - [Spudger](#) (1)
-

Step 1 — Touch Pad



- Remove the two screws at the bottom of the device.
- ⓘ The two screws can be removed using the PH00 head located in the iFixit Repair toolkit.
- ⓘ The two screws are 1/8 inch in length.
- Remove the cover to reveal the internal component.

Step 2



- Using the Spudger, forcefully push upward on the USB port of the device to remove the main component.
- ⓘ This will release the tension on the multiple parts. One of which will be the touch pad.
- ⓘ The touch pad can now be easily replaced.
- ⓘ The touch pad has a smaller center piece that must be replaced for proper usage of the device.

To reassemble your device, follow these instructions in reverse order.