



Back Cover Replacement

Remove back cover of device to gain access to the internal electronics of the dinosaur.

Written By: Desiree DesJardins



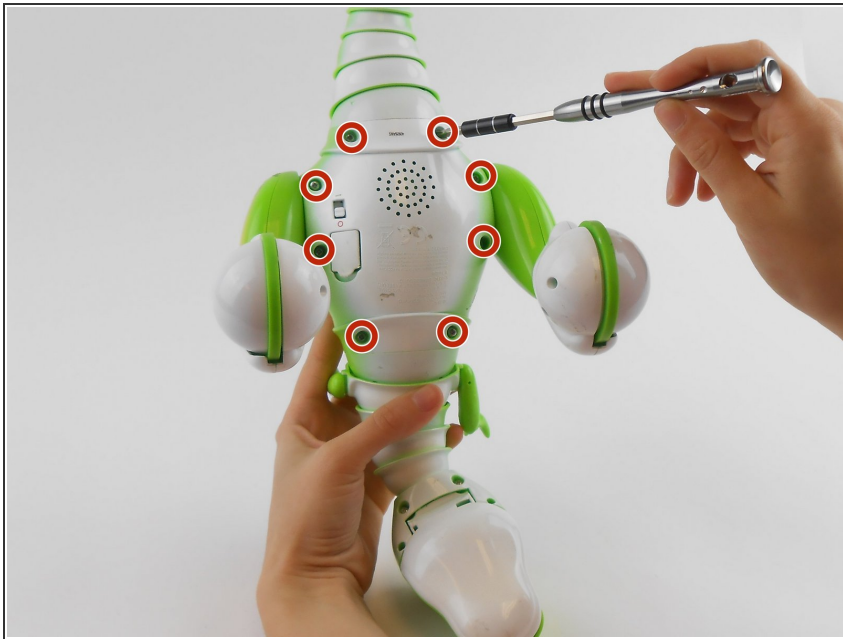
INTRODUCTION

This guide is a prerequisite to accessing the inside of the Zoomer Dino Boomer, where the battery, electronics, and pulley system are located. It is important to be gentle while opening the dinosaur since the top covering will still be attached to the electronic system via a wire.

TOOLS:

- [Phillips #1 Screwdriver](#) (1)
 - [Spudger](#) (1)
 - [Tweezers](#) (1)
-

Step 1 — Back Cover



- ⓘ Power off Zoomer Dino Boomer before disassembly.
- Remove the eight 9.3mm Phillips #1 screws.

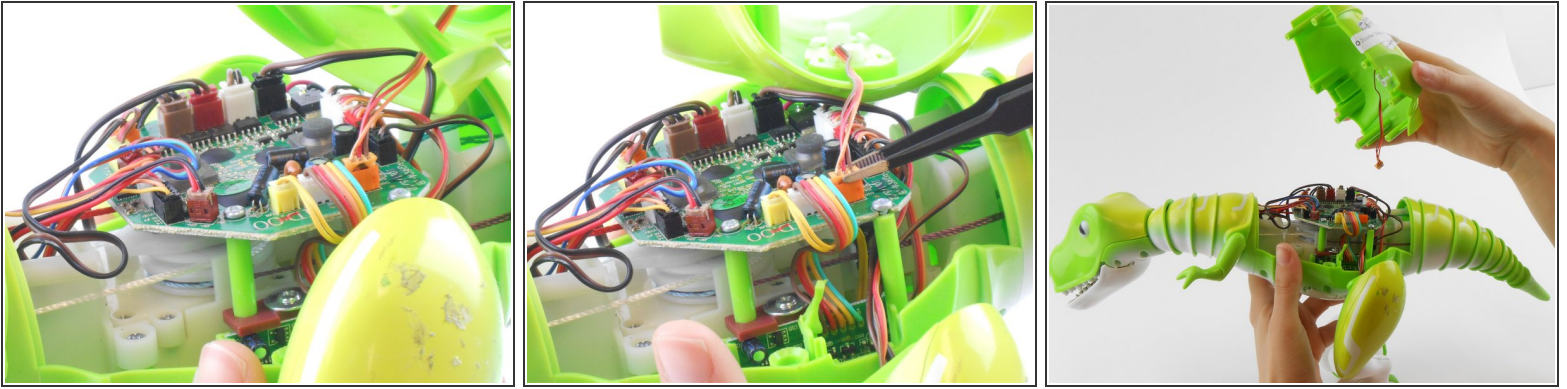
Step 2



- Turn dinosaur over and hold upright.
- Use the spudger to pry apart the back cover from the remainder of the Zoomer Dino Boomer.

⚠ Be gentle while removing the back cover. The back cover of the Zoomer Dino Boomer is still connected to the electronic system by a wire.

Step 3



- Disconnect the wire that connects the back cover of the dino to the main circuit board by carefully pulling on the orange wire connector with tweezers.
 - Remove back cover.
 - ⓘ If you are having difficulty removing the connector from its socket, push in the small tabs on the side of the connector with the tweezers. This step may take some work.
- ⚠ Do not damage the wires or circuit board.

To reassemble your device, follow these instructions in reverse order.