



# MacBook Pro 13" Unibody Early 2011 Battery Connection Replacement

Disconnecting battery. Internal Prereq.

Written By: Andrew Bookholt



---

## INTRODUCTION

Disconnecting Battery. Internal Prereq.

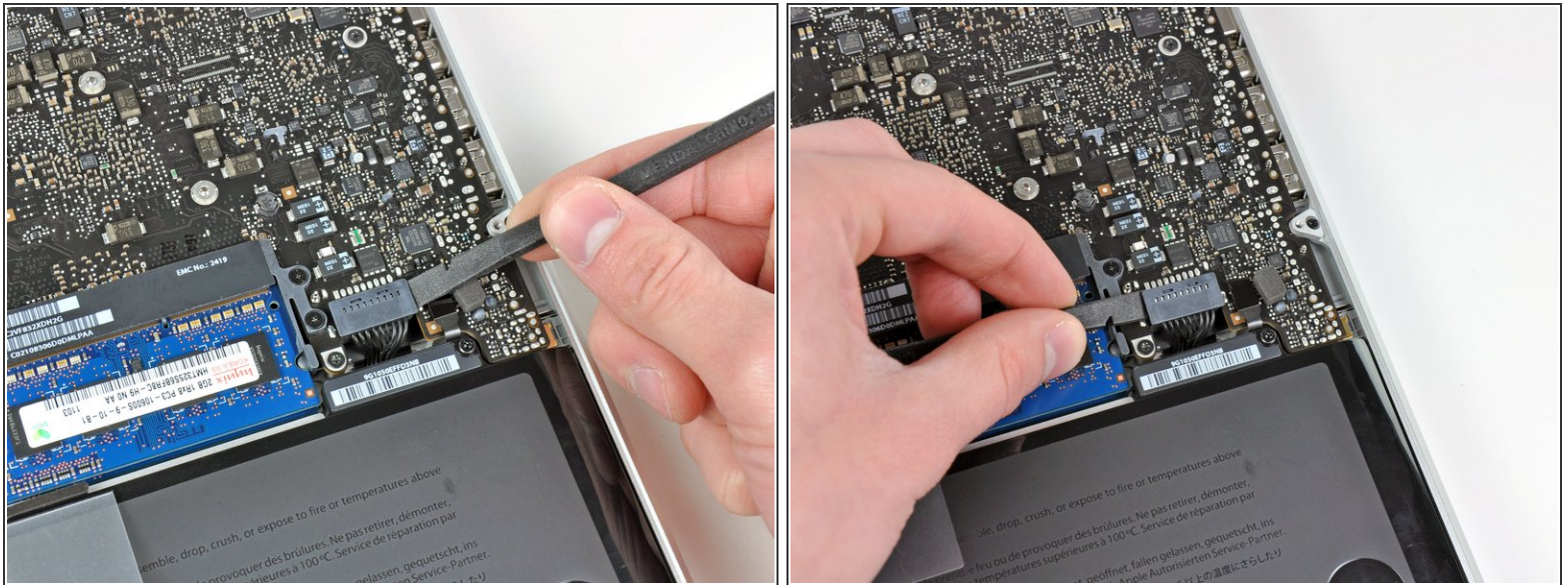
---

### TOOLS:

- [Spudger](#) (1)
-



## Step 1 — Battery Connection



- Use the edge of a spudger to pry the battery connector upwards from its socket on the logic board.
- ⓘ It is useful to pry upward on both short sides of the connector to "walk" it out of its socket. Be careful with the corners of the connectors, they can be easily broken off.

## Step 2



- Bend the battery cable slightly away from its socket on the logic board so it does not accidentally connect itself while you work.

To reassemble your device, follow these instructions in reverse order.

This document was last generated on 2019-08-01 09:58:39 PM.