



MacBook Pro 13" Unibody Early 2011 Hard Drive Replacement

Internal Prerequisite.

Written By: Andrew Bookholt



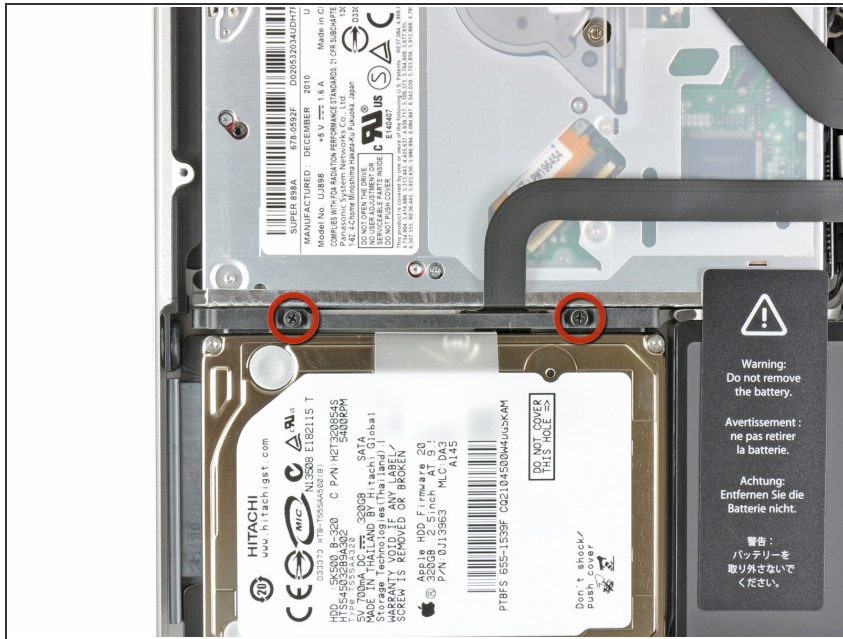
INTRODUCTION

Internal prerequisite.

TOOLS:

- [Phillips #00 Screwdriver](#) (1)
-

Step 1 — Hard Drive



- Remove the two Phillips screws securing the hard drive bracket to the upper case.
- ⓘ These screws will remain attached to the hard drive bracket.

Step 2



- Remove the hard drive bracket.
- ⓘ The hard drive bracket may be firmly seated against the upper case.

Step 3



- Use the attached pull tab to lift the hard drive out of the upper case.
- ⚠ Don't try to completely remove the hard drive just yet. It is still attached to the hard drive cable.

Step 4



- Pull the hard drive cable away from the body of the hard drive.
- Remove the hard drive.

To reassemble your device, follow these instructions in reverse order.