



Insignia Flex 8 NS-15AT08 Battery Replacement

This guide demonstrates how to replace your battery of the tablet.

Written By: Jeremy Anaya



TOOLS:

- [iFixit Opening Tools](#) (1)
-

Step 1 — Back Casing



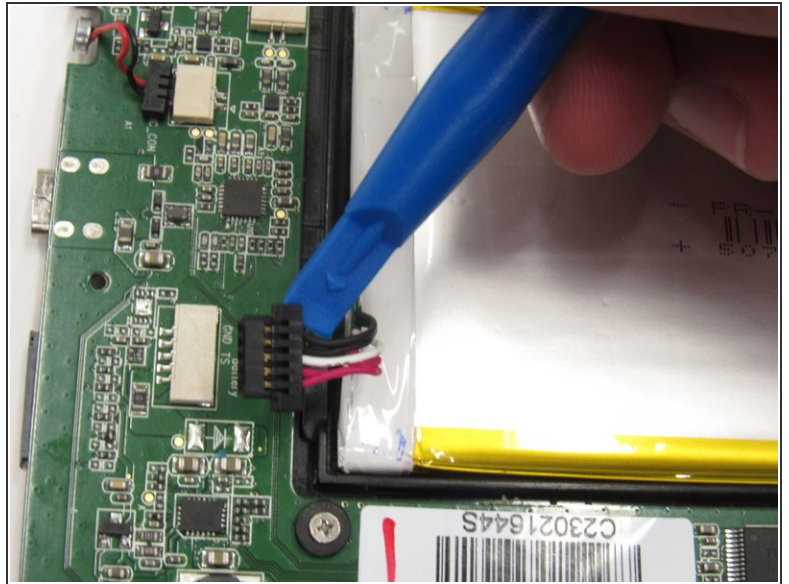
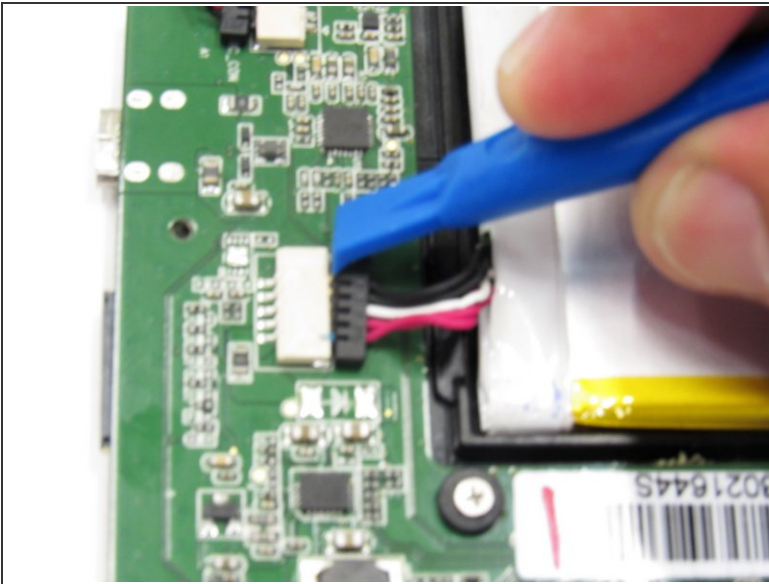
- Insert a plastic opening tool into the seam between the back casing and the screen to separate the back casing from the tablet.
- ⚠ You may need to use a metal opening tool for extra prying power, but beware that it can scratch your device or damage the internal components if the tool is inserted too deep.
- ⓘ You will hear the tabs pop as you separate the back casing around the tablet.

Step 2



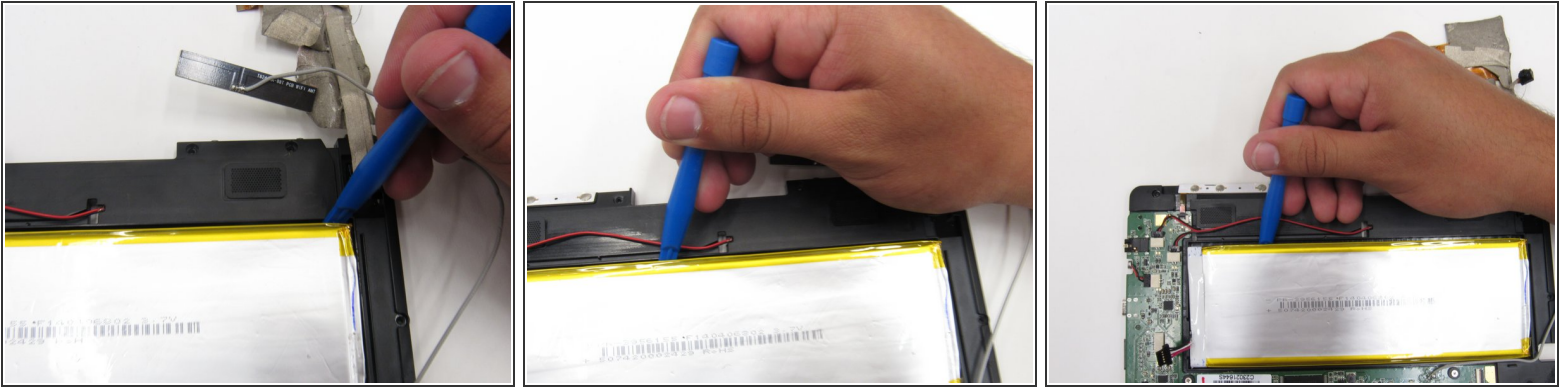
- Lift the back casing away from the rest of the device which should include the exposed circuit board and screen.
- Set the casing aside.

Step 3 — Battery



- Wedge a plastic opening tool in between the male, black module and female, white module to disconnect the wires module from the circuit board.

Step 4



- Use a plastic opening tool to pry the battery from the circuit board by wedging it around the perimeter of the battery.

Step 5



- Remove the battery from the circuit board by lifting it with the spudger or finger.

To reassemble your device, follow these instructions in reverse order.