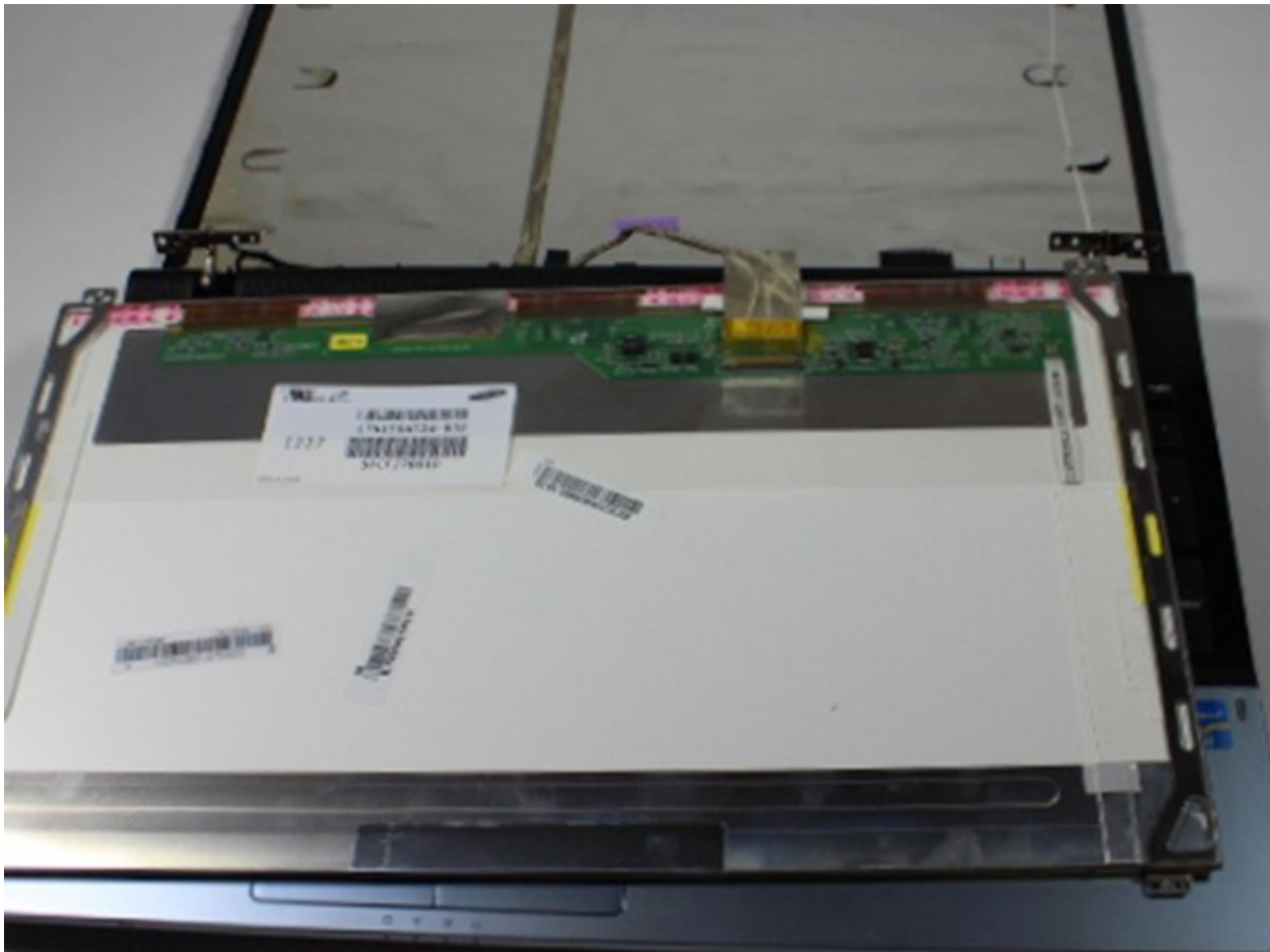




Samsung NP300E5C Screen Replacement

If your screen is causing you problems, it may be time for a replacement. Follow this guide to perform this replacement!

Written By: aliahsan95



INTRODUCTION

Is your laptop's screen cracked or non responsive? Try replacing it! This guide will show you how to remove the screen's plastic casing so that you can access the screen itself.

TOOLS:

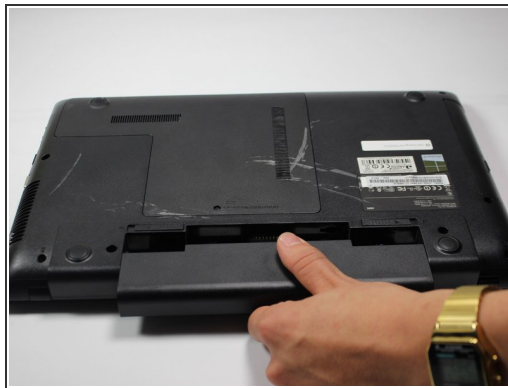
- [Phillips #000 Screwdriver](#) (1)
 - [iFixit Opening Tools](#) (1)
-

Step 1 — Battery



- Lay laptop down so that the bottom is facing the sky.

Step 2



- Push both tabs away from the center of the device.
- While both are in the fully unlocked position, slide the battery out.

Step 3 — Screen



- Turn the laptop over and open it so that you can see the keyboard and screen.
- Using a Phillips #000 screwdriver, remove the two 4 mm Phillips #8 screws that are under the black covers on the front of your screen.
- ⓘ You can remove the black covers by simply pushing your screwdriver into them.

Step 4



- Insert the plastic opening tool into the seam on the top of the screen.
 - ⓘ The seam is where the back screen cover and the plastic bezel around the edges of the screen meet.
- Use the plastic opening tool to pop open the clasps that keep the casing on the screen.
 - ⓘ It helps to use the plastic opening tool like a crowbar.
- Follow this seam around the laptop's screen with the plastic opening tool until the plastic cover comes off.
 - ⓘ Don't be afraid to use your fingers to help pop open the clips.

Step 5



- Using a Phillips #000 screwdriver, remove the top two 4 mm Phillips #8 screws that join the LCD screen to the plastic casing.
 - Using the same screwdriver, remove the bottom four 4 mm Phillips #8 screws that mount the screen onto the base of the laptop.
- ⚠ As you remove these bottom 4 screws, support the screen! As the screws come off, the screen will begin to fall backwards.

Step 6



- Gently lay the LCD on the keyboard, and lay down the back panel of the screen as well. They are not attached and will separate easily.
- ⓘ The LCD and the back panel must remain close to one another due to the video connector at the bottom that links the two.
- Remove the tape that secures the video connector to the LCD.
- While maintaining a firm grip on the LCD, grasp the video connector at its base, and pull it away from you.
- ⓘ Don't be afraid to pull, the video connector is not soldered onto the LCD.

To reassemble your device, follow these instructions in reverse order.