



Cuisinart Smart Stick CSB-75 Electrical Cord Replacement

Replace your faulty electrical cord to restore power to your Cuisinart Smart Stick.

Written By: Jordan Robinson



INTRODUCTION

This guide will teach you how to replace the switch board inside your Cuisinart Smart Stick. If power is not being supplied to the Smart Stick, the electrical cord could be faulty.

TOOLS:

- [Soldering Iron](#) (1)
 - [Metal Spudger Set](#) (1)
 - [64 Bit Driver Kit](#) (1)
-

Step 1 — Electrical Cord



- Located on the back of the motor body are three screw covers. To remove the three grey screw covers, use a Flat Head Screwdriver (1.0mm or 1.5mm).
- After prying these off, the screws will be exposed.

Step 2



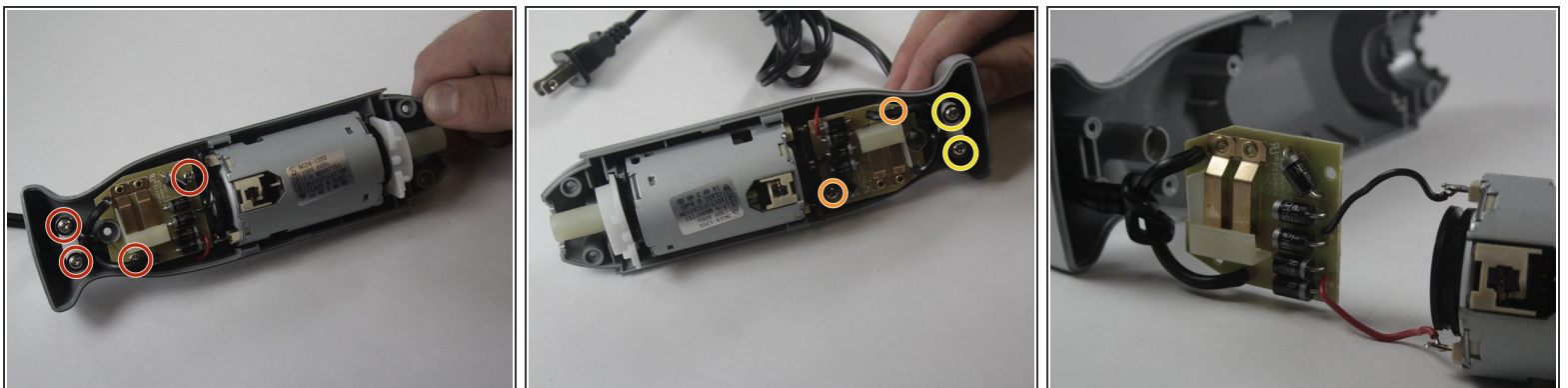
- Remove three 13.3 mm Phillips PH#2 screws.

Step 3



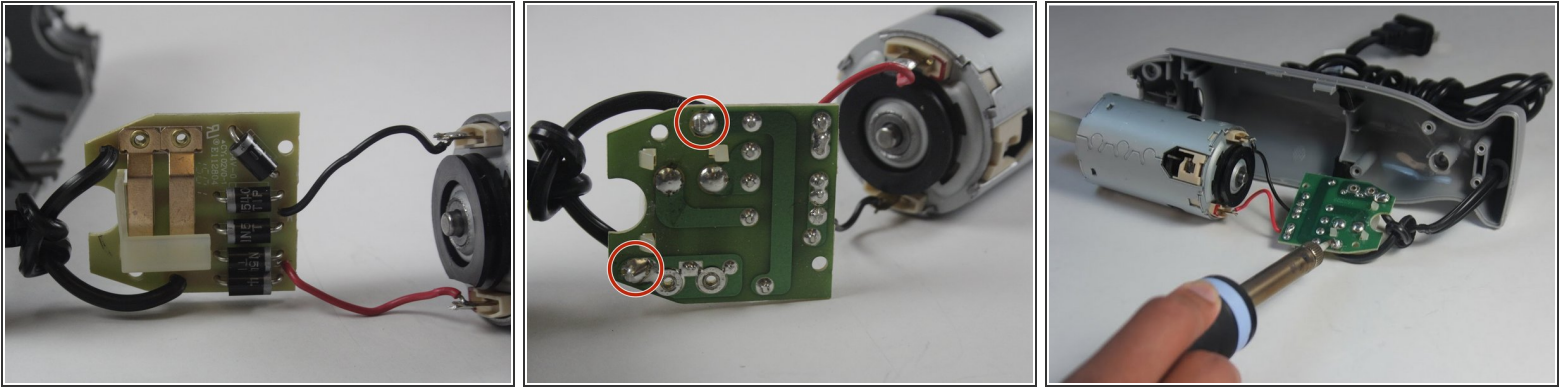
- Pry open Cuisinart using a plastic opening tool.
- ⓘ The metal spudger is great when you need serious prying power, but the regular black nylon spudger or a plastic opening tool should be used whenever possible.
- Make sure to pry open near the clips of the smart stick for easy opening.

Step 4



- Unscrew the 4 screws on the inside.
- Remove 2 13.3mm Phillips PH#2 screws.
- Remove 2 17.5 mm Phillips PH#2 screws.
- ⓘ Unscrewing these screws will isolate the switch board.

Step 5



- Refer to these steps on [Soldering](#) to replace the electrical cord in the smart stick.

⚠ Be careful when soldering; it gets very hot.

To reassemble your device, follow these instructions in reverse order.