



# Samsung Galaxy Tab S 8.4 Battery Replacement

This guide describes how to the replace the battery.

Written By: Tara Fussell



## INTRODUCTION

Often times a battery can lose its ability to hold its charge. If your battery will not charge, or if your battery only holds its charge for a few hours before dying, the battery may need to be replaced. This guide will show you how to replace the battery in your device.



### TOOLS:

- [iFixit Opening Tools](#) (1)



### PARTS:

- [Galaxy Tab S 8.4 Battery](#) (1)

## Step 1 — Back Cover



- Place the plastic opening tool between the face of the display and rim of the back cover of the device.
- Move the plastic opening tool in a downward motion until you see separation between the tablet and back cover.

## Step 2



- By sliding the plastic opening tool around the rim of the device, carefully continue to pry apart the screen and back cover.
- ⓘ Try to separate evenly on all sides until the screen detaches from the device backing completely.
- ⓘ If this is the first time removing the back cover, it will be rather difficult to separate it from the tablet.

### Step 3



- Remove the back cover after the entire rim is disconnected.

### Step 4 — Battery

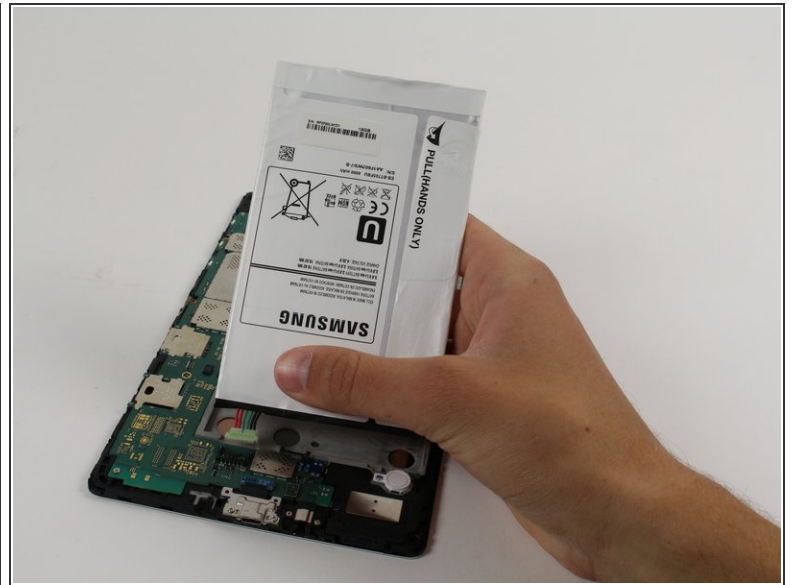
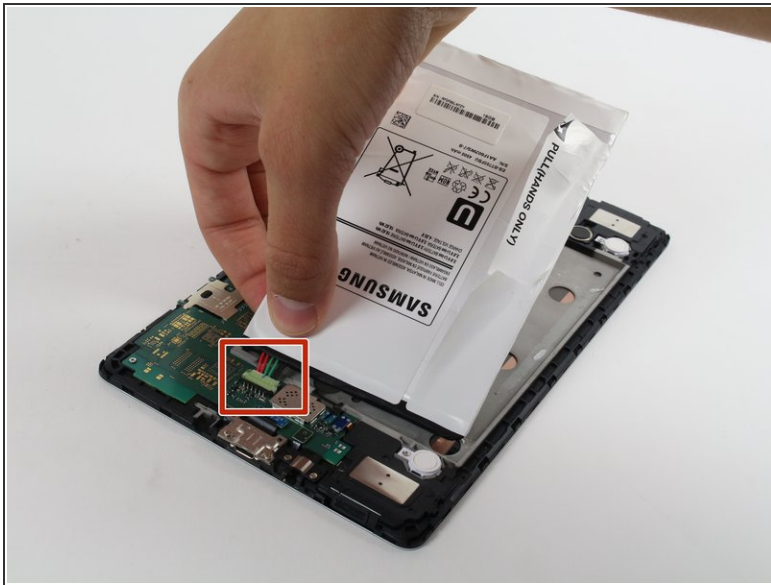


- The battery is glued down, usually with double-sided tape along the sides. The goal is to lift the battery out by pulling on the folded white tab in the top right corner. It may be necessary to first loosen the adhesive by running a flat, thin plastic tool under the edges of the battery.

- ⓘ Be careful when lifting the battery out, it is still connected to the device.



## Step 5



- Gently grasp and lift up the light green connector located near the bottom left corner of the battery. It is connected to the battery by red, green, and black wires.

**⚠** Do not yank the connector by the wires. If it does not disconnect easily, slide a plastic opening tool between the white connector and the board to lift the connector away from the board.

To reassemble your device, follow these instructions in reverse order.