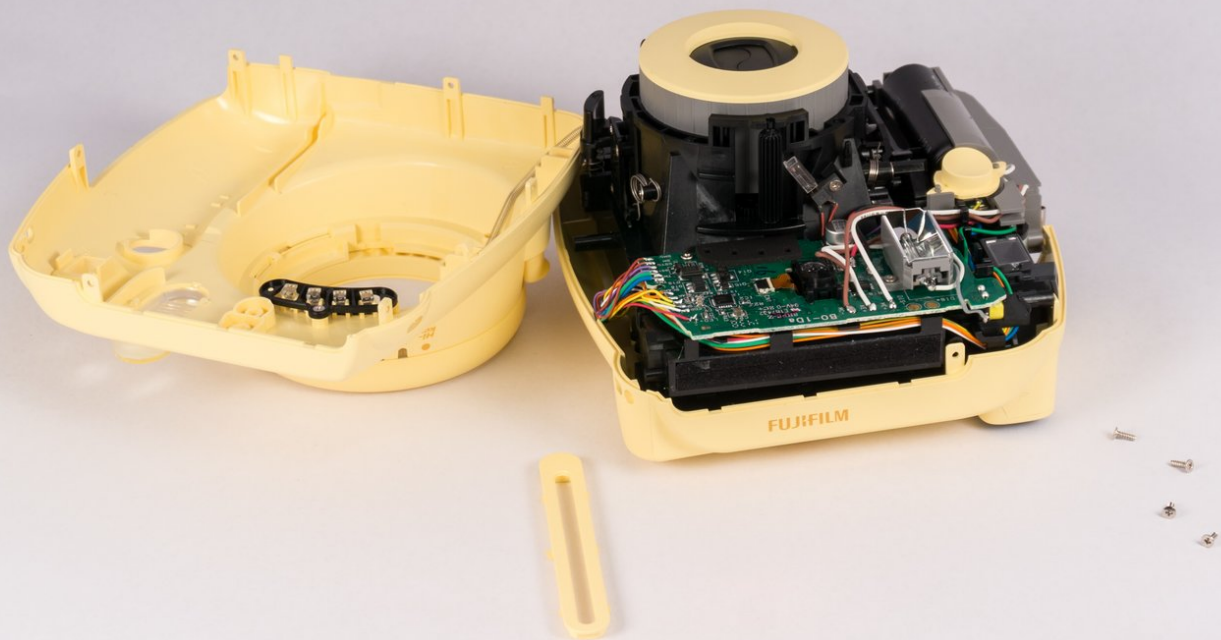




# Fujifilm Instax Mini Eight Camera Shell Replacement

The overall purpose of this guide is to show the steps that must be executed in order to remove the Fujifilm Instax Mini 8's camera shell.

Written By: Boyang Wu



---

## INTRODUCTION

The camera shell is the plastic casing that makes up the outside of the Fujifilm Instax Mini 8; which is meant to hide wires, protect the film, and hold the main components of this camera together in a compact manner. A damaged shell will compromise the integrity of the device and may cause other parts of the camera to malfunction.

---

### TOOLS:

- [iFixit Opening Tools](#) (1)
  - [Spudger](#) (1)
  - [64 Bit Driver Kit](#) (1)
-

## Step 1 — Camera Shell



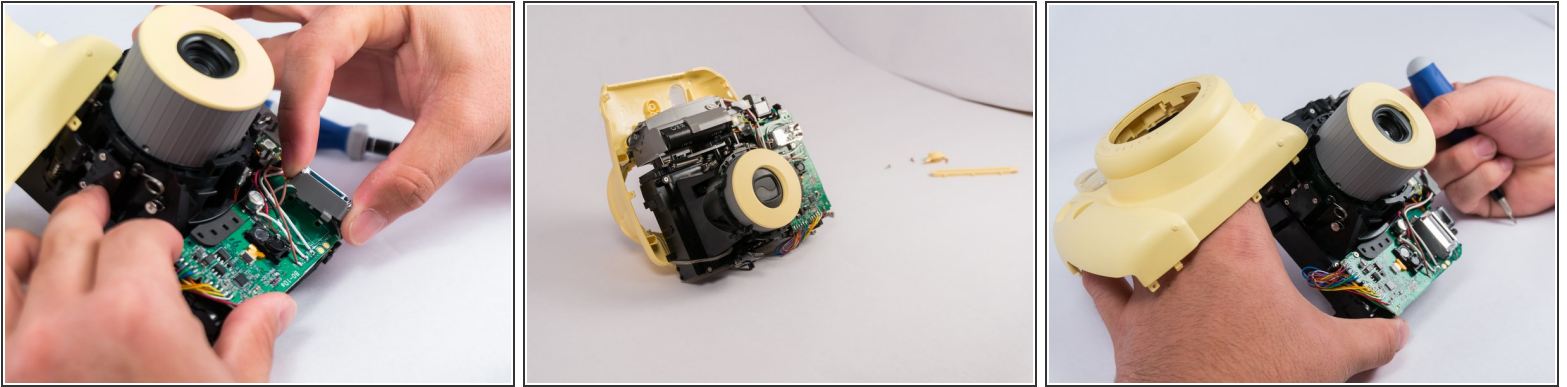
- Start off by looking at your camera and rotating it to locate all the screws. There should be eight screws in all.


## Step 2



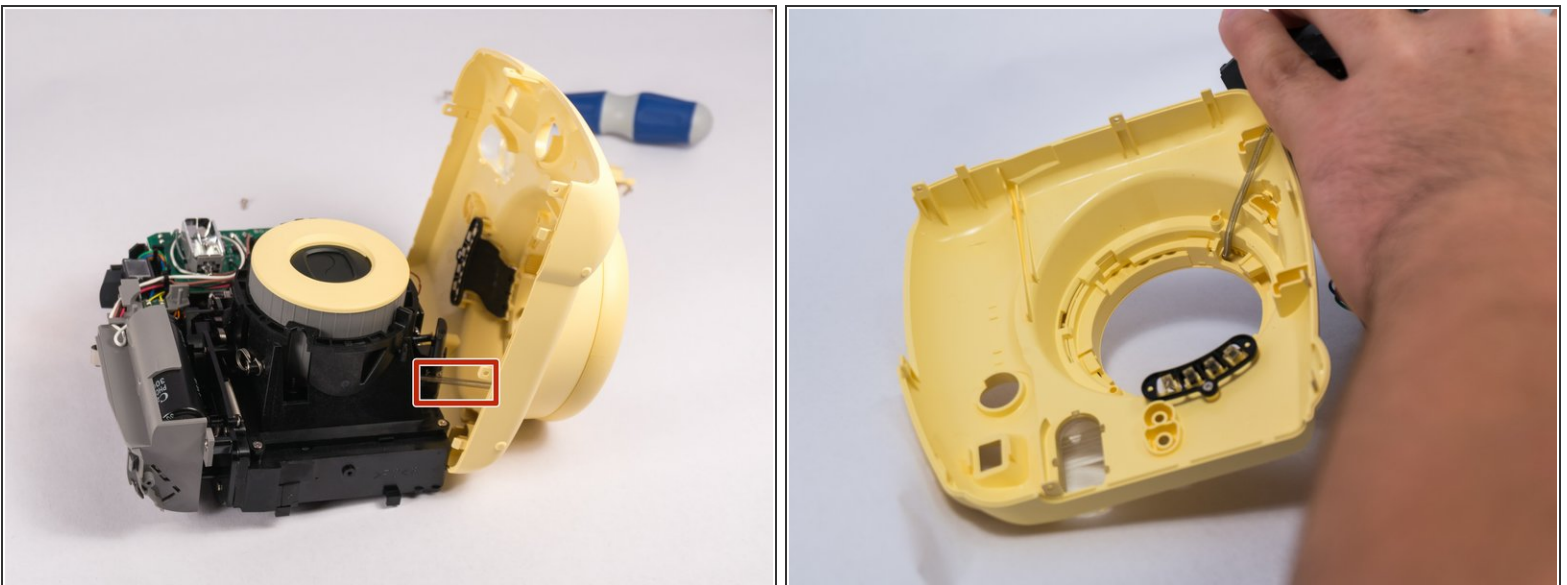
- Press the tab down in order to unlatch the film compartment cover.
- Remove the film from the compartment (if any is present)
- Remove the compartment cover completely.
- Begin by using the small #00 Philips head screwdriver and turning at a counter-clockwise fashion to remove screws.

### Step 3



 Use the plastic opening tools and spudger to safely remove the front shell casing.

### Step 4



- Lift the front part of shell up, assuring not to pull too hard due a spring that is connect to the shell and the inside of the camera.
- Carefully, using a small #00 Philips head screwdriver, remove the spring from the inside component of the camera.
- At this point you should have the shell removed completely. Congratulations! Repeat the steps backwards to get the shell back on your camera unit.

To reassemble your device, follow these instructions in reverse order.