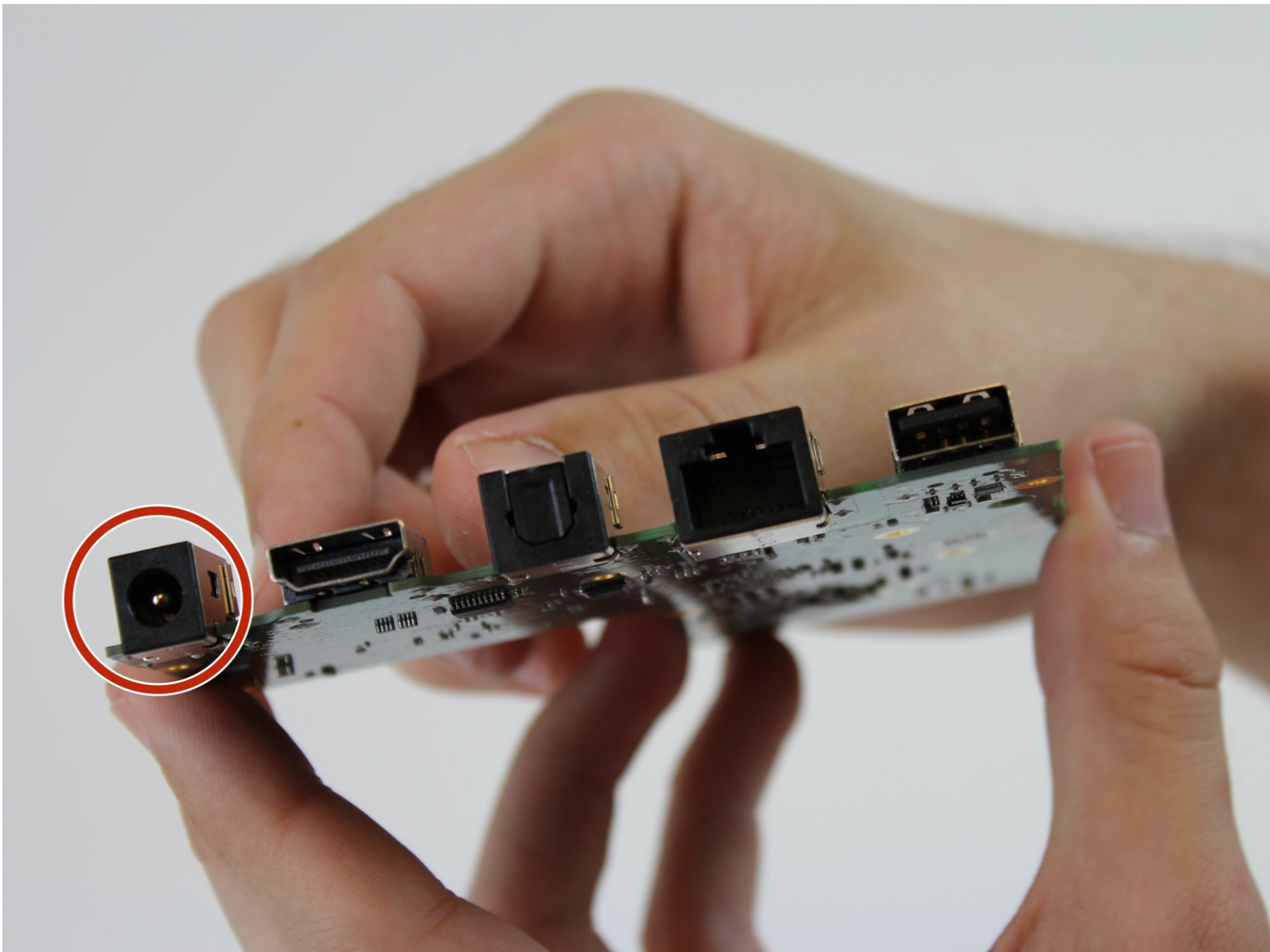




Amazon Fire TV Power Cord Port Replacement

Power cord port replacement.

Written By: jeffrey555



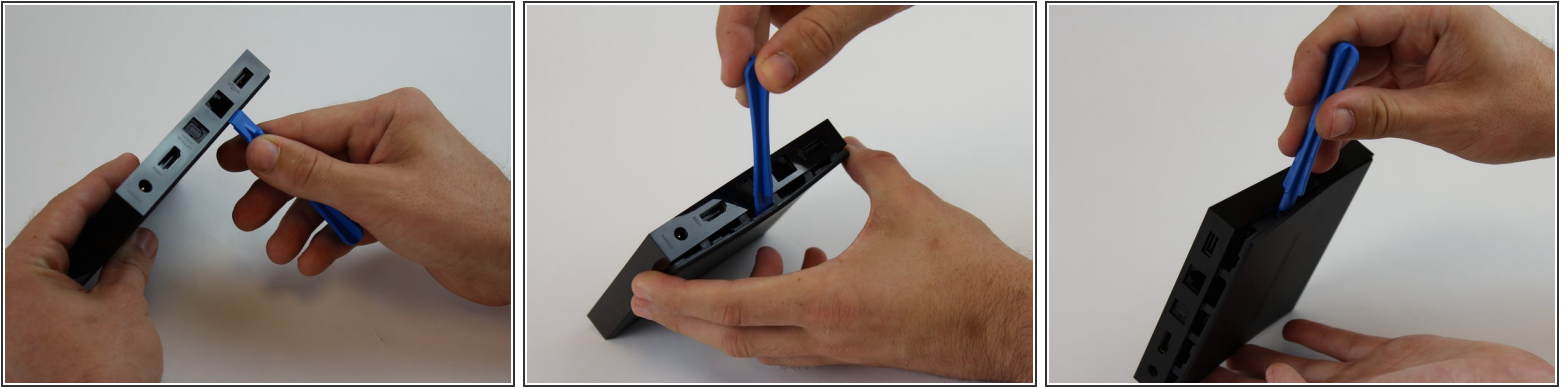
INTRODUCTION

If your device is not working due to a faulty power cord, you can follow this guide to easily replace the faulty cord with a new one.

TOOLS:

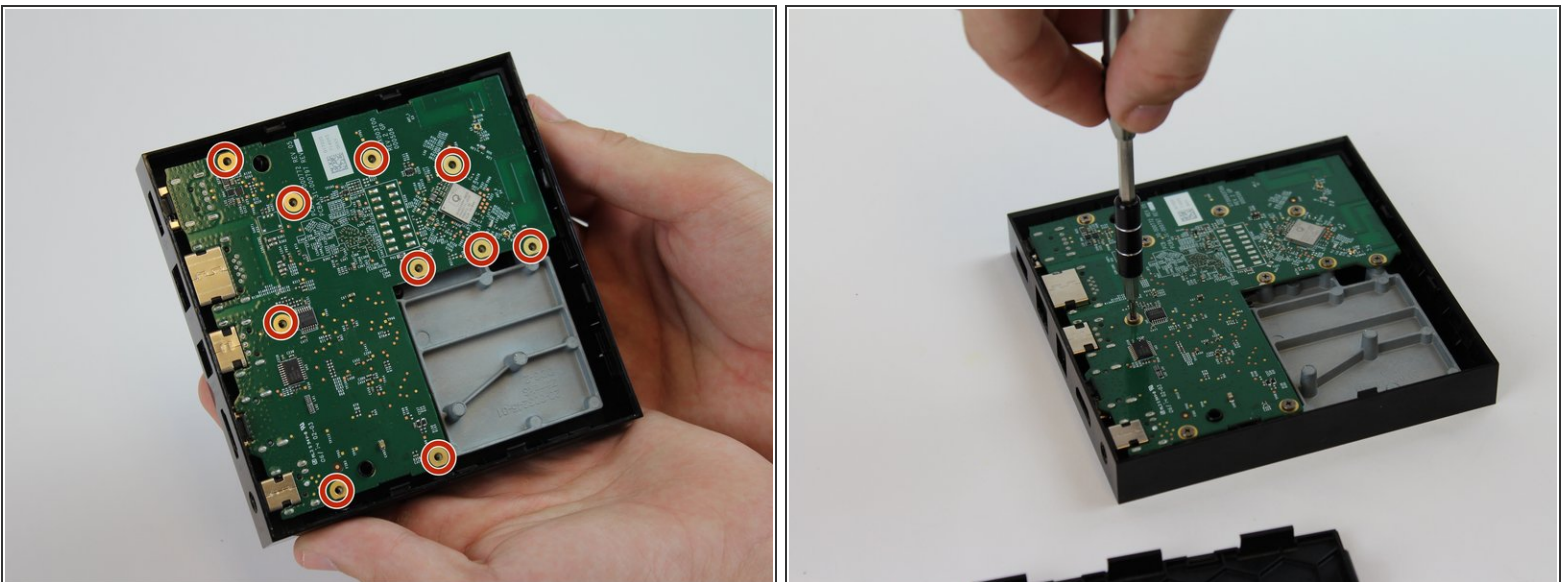
- [iFixit Opening Tools](#) (1)
 - [Soldering Workstation](#) (1)
 - [JIS Driver Set](#) (1)
-

Step 1 — Motherboard



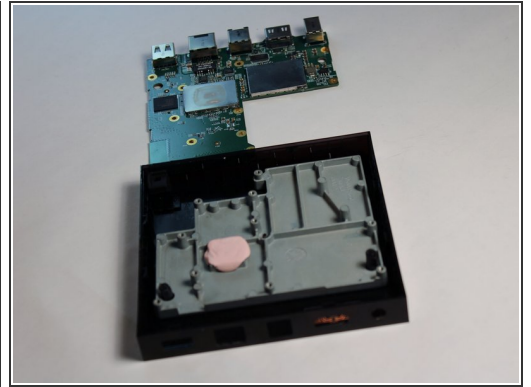
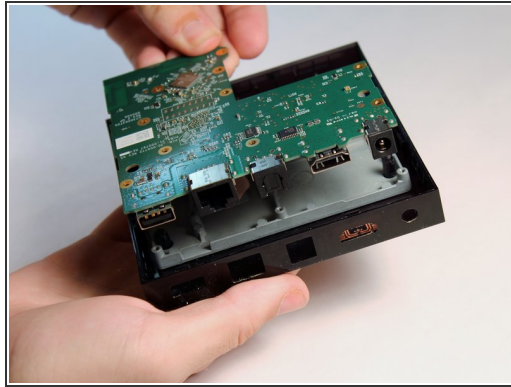
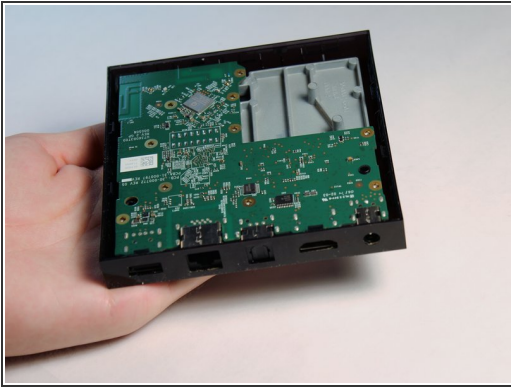
- Place the plastic opening tool in the space between the rubber and the plastic case of the device.
- Apply pressure by pushing upward on the case.
- Separate the bottom square rubber piece from the case using the plastic opening tool until all clips are detached.

Step 2



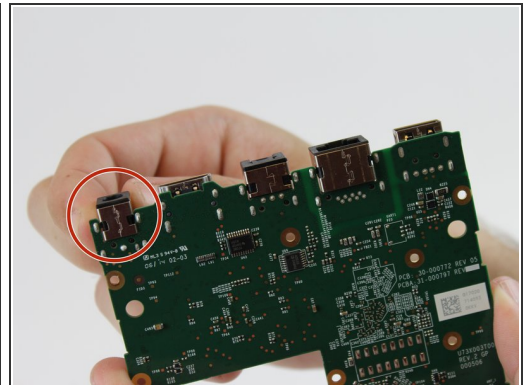
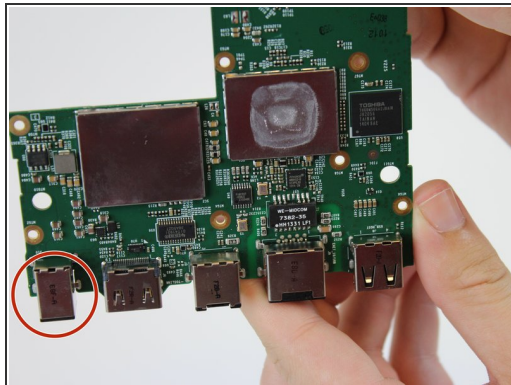
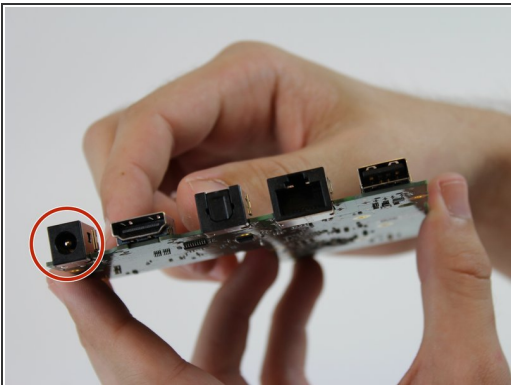
- Locate the ten J#00 Phillips screws and remove them.

Step 3



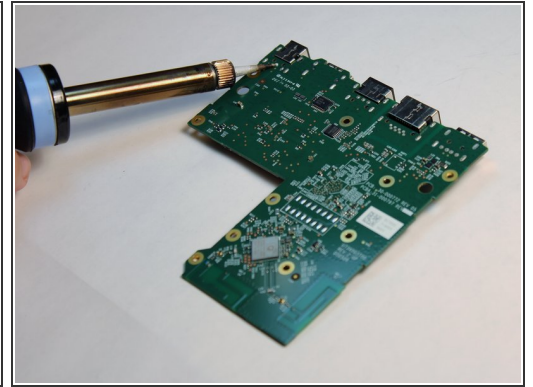
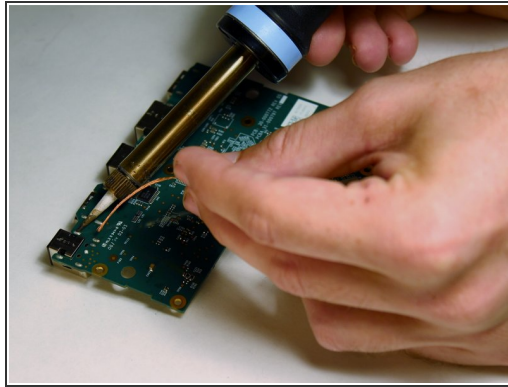
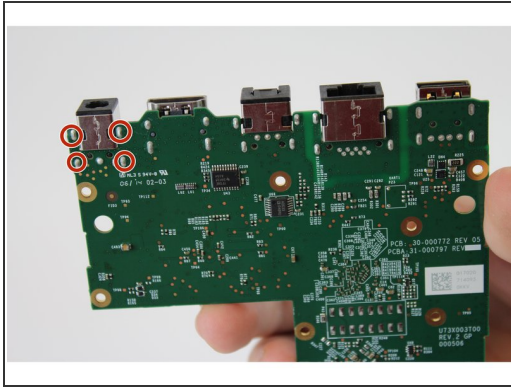
- Place your finger on the short edge of the motherboard and lift it to separate it from the plastic case.

Step 4 — Power Cord Port



- With the mother board back facing you locate the power cord port found on the far left end.

Step 5



- Locate the four soldering joints for the power cord port found on the top side of the mother board.
- Desolder the joints of the power cord port to release it from the motherboard.
- Place the new power cord port into its original location and solder its joints.
- Use the iFixit [soldering and desoldering guide](#).

To reassemble your device, follow these instructions in reverse order.