



iMac Intel 24" EMC 2111 Access Door Replacement

Remove the access door to change the RAM sticks on your iMac Intel 24" EMC 2111.

Written By: Andrew Bookholt



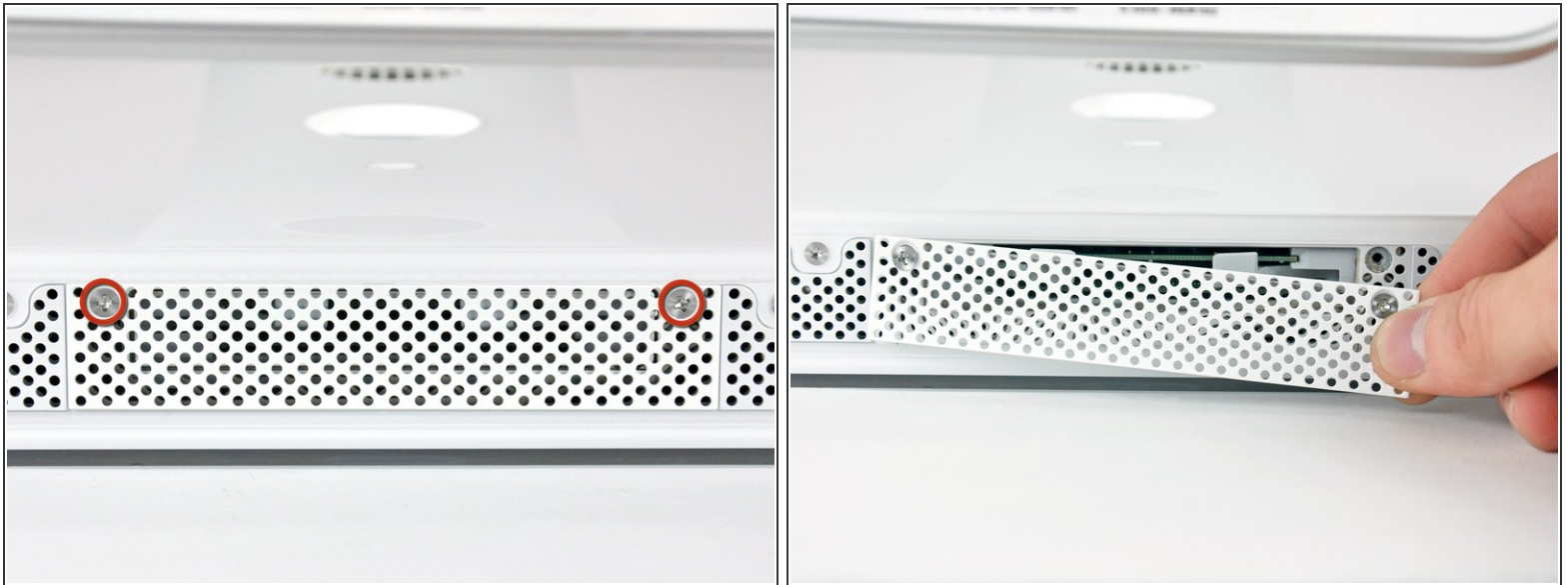
INTRODUCTION

Use this guide to replace the access door on the bottom edge of your iMac.

TOOLS:

- [Phillips #1 Screwdriver](#) (1)
-

Step 1 — Access Door



- Loosen the two Phillips screws securing the access door to your iMac.
- ⓘ Both screws remain captive within the access door.
- Remove the access door.

To reassemble your device, follow these instructions in reverse order.