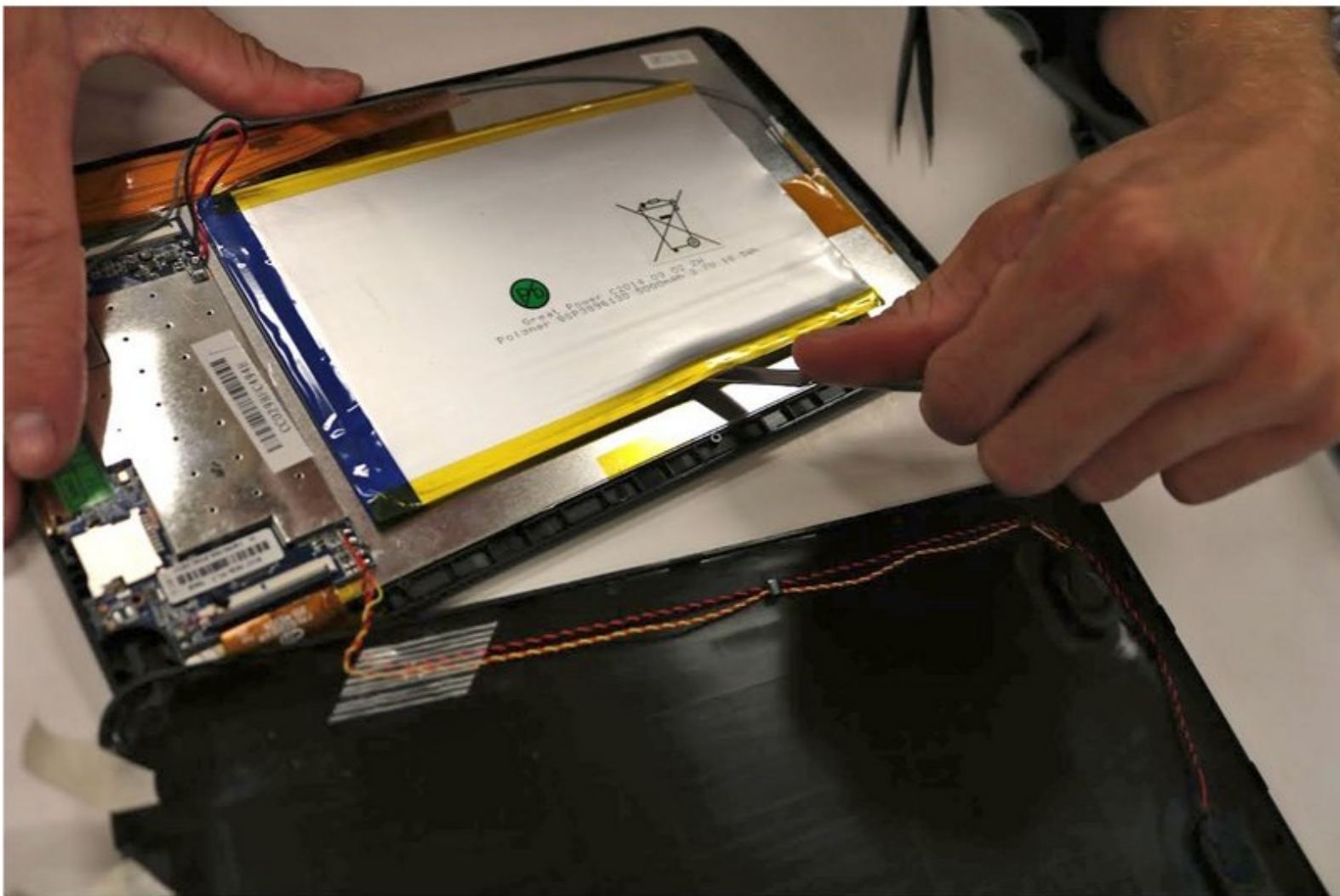




DigiLand DL1010Q Battery Replacement

Use this guide to replace your dying battery.

Written By: Faith Lebo



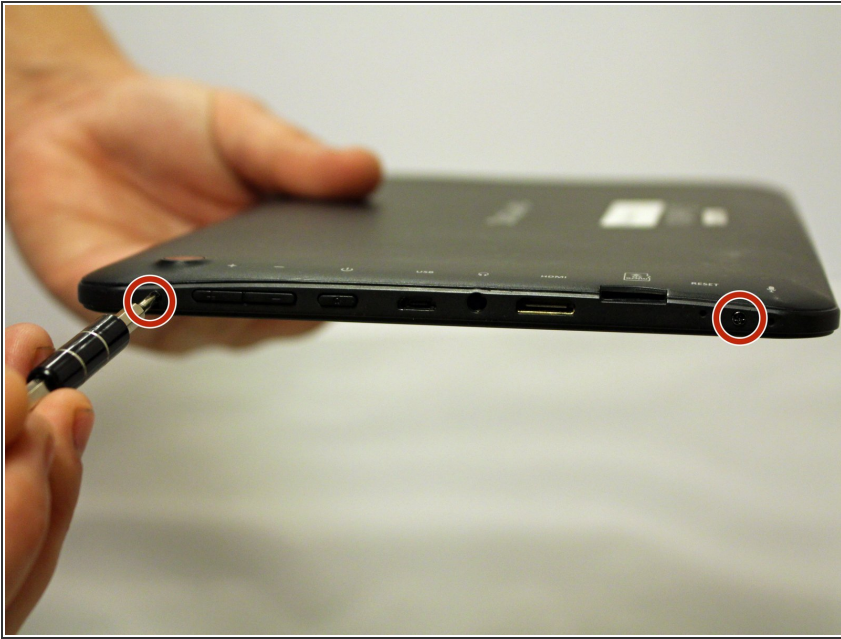
INTRODUCTION

To replace the battery you will need a sharp edged tool, be sure to be careful. The glue on the battery is sticky and hard to get off.

TOOLS:

- [Soldering Iron](#) (1)
 - [Phillips #00 Screwdriver](#) (1)
 - [iFixit Opening Tools](#) (1)
 - [Spudger](#) (1)
-

Step 1 — Rear Case



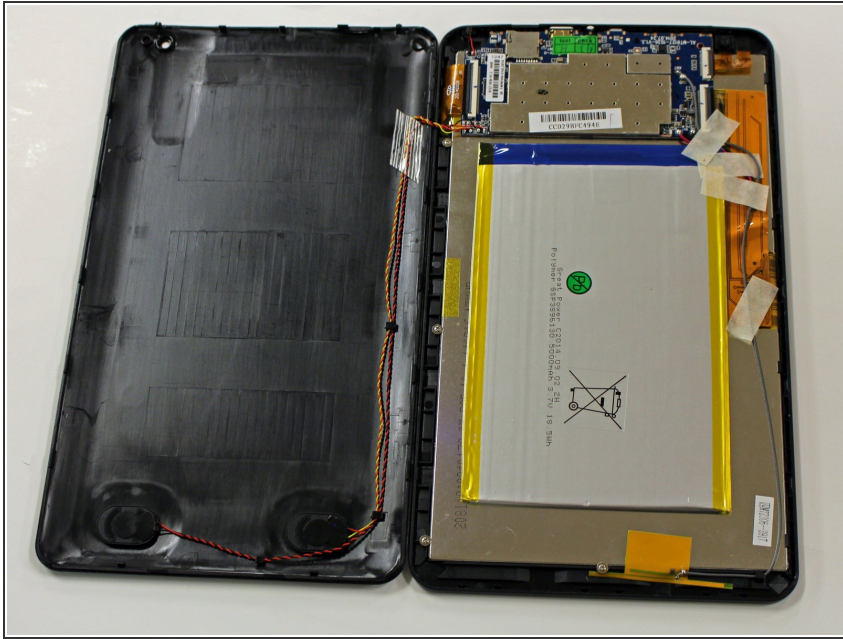
- With a J00 Philips head screwdriver, unscrew the two 4mm black screws located at the bottom of the device.
- ⚠ Before disassembling your device, be sure it is powered off.

Step 2



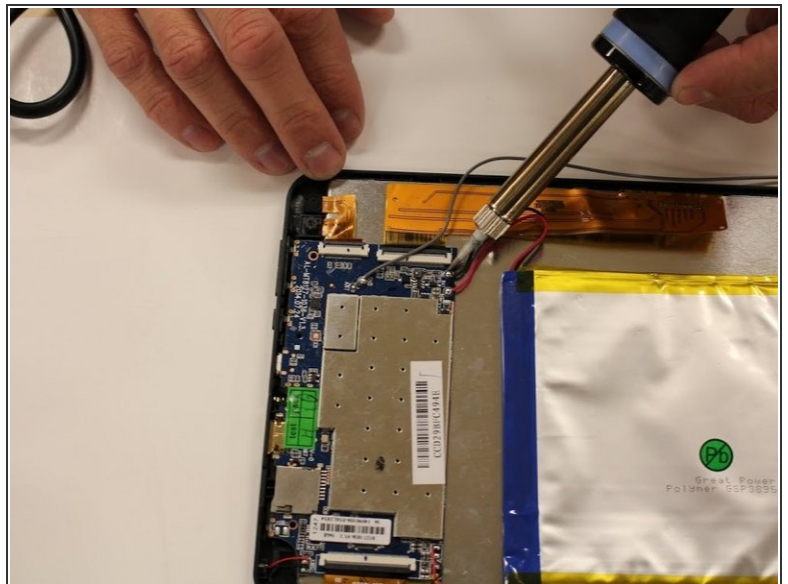
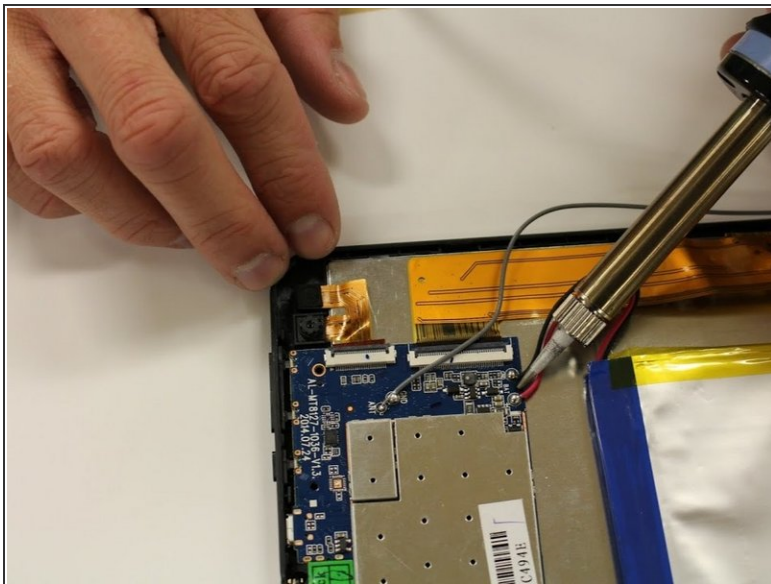
- Using a plastic opening tool, begin softly prying open device by first inserting it in between the front and back panels.
- Continue prying the edges while moving around the device's perimeter until the back can be easily removed.

Step 3



- Carefully lift back panel away from the body of the device.
- ⚠ Speaker wires are connected to both the front and back panel.

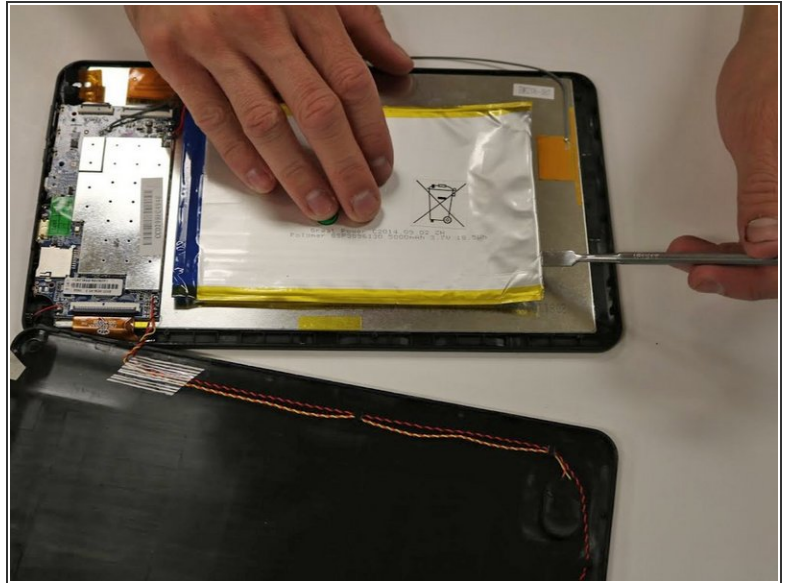
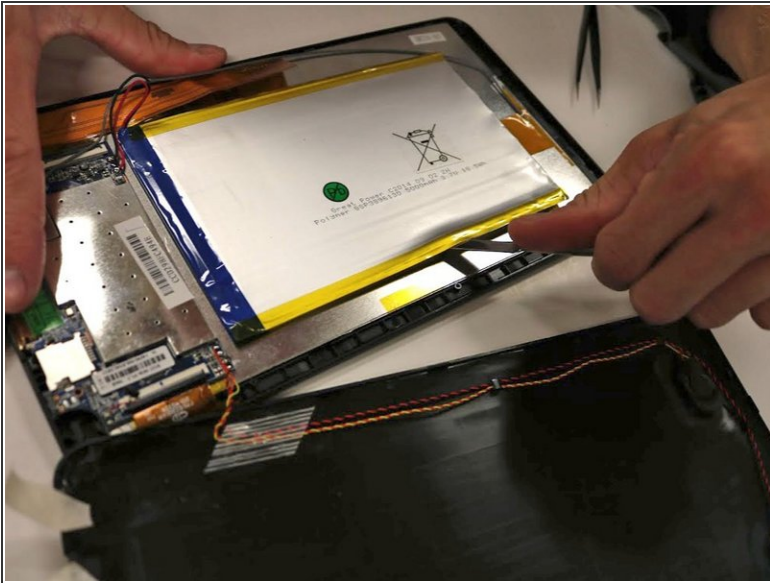
Step 4 — Battery



- Desolder positive and negative, red and black, wires from the mother board that are connected to the battery.

⚠ The soldering tool is hot, and will burn. For how to use a soldering tool follow the [How to Solder Guide](#)

Step 5



- Using a metal spudger tool, wedge between battery and metal screen.
- Follow the edge of the battery to loosen the glue.

Step 6



- Once the glue is loosened, you should be able to pry off the battery from the screen.
- Using your hands, pull up on the battery to pull battery off.
- ⚠ Pulling on the battery causes you to bend the battery. Bending the battery could cause it to break open. Battery fumes are toxic and unsafe.
- The battery will be completely disconnected and you can set the battery aside in a safe place.

To reassemble your device, follow these instructions in reverse order.