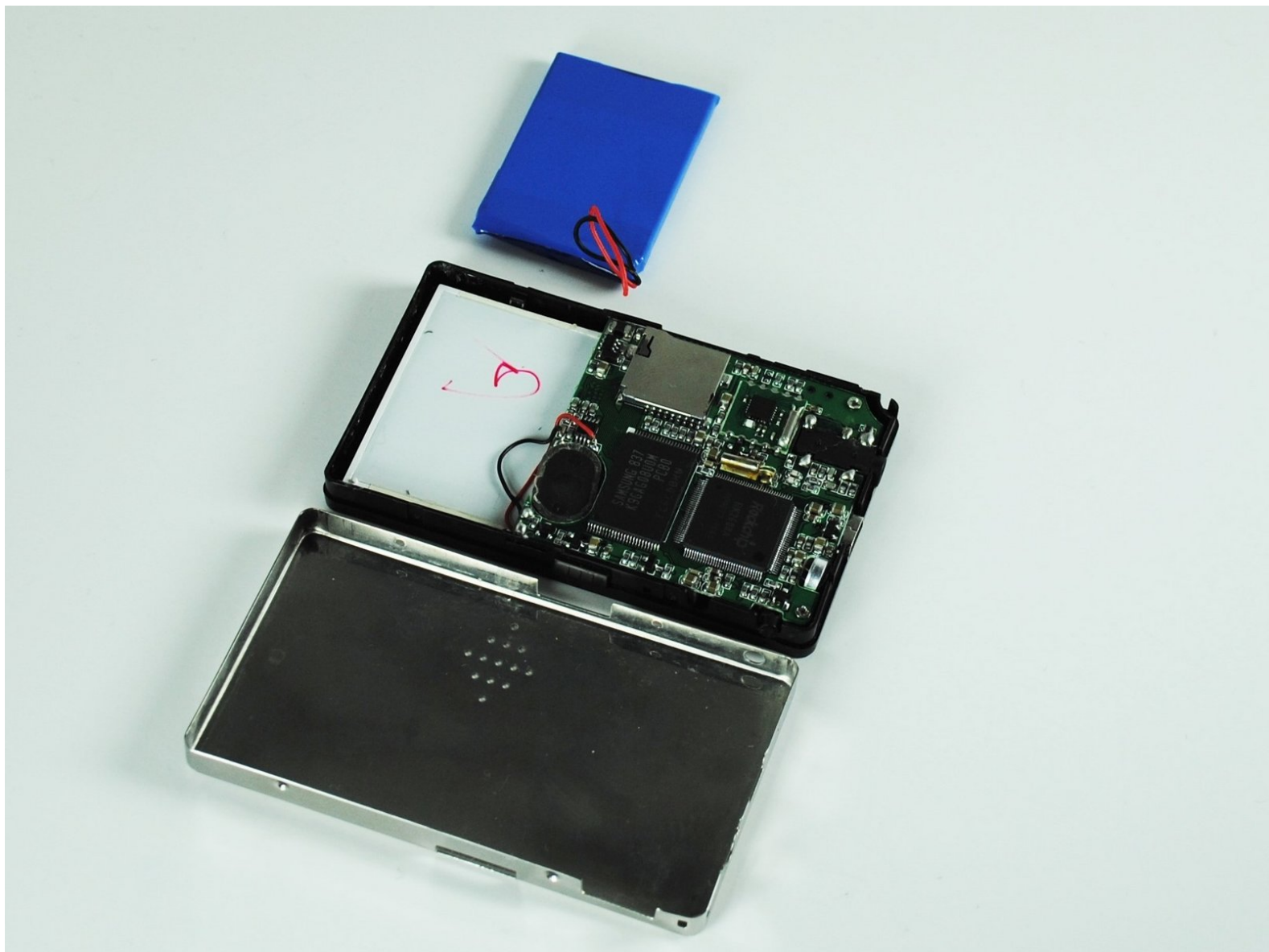




# Element GC-1020 Battery Replacement

This guide will show you how to replace the battery within the GC-1020 device in the case of wire damage (wires removed from logic board) and/or battery dysfunction.

Written By: Lashaun Noel



---

## INTRODUCTION

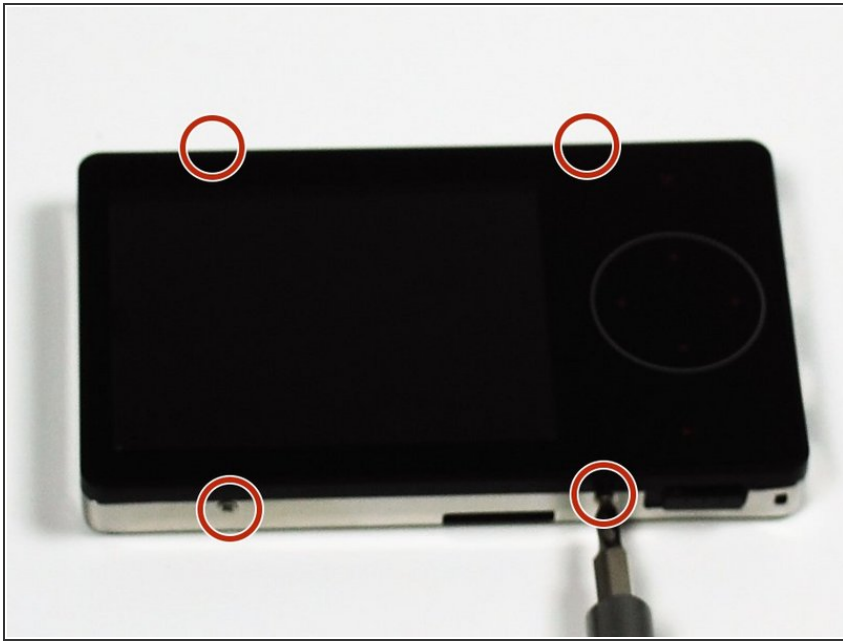
The battery in the GC-1020 device have two wires soldered (similar to being glued) to the logic board. It is fragile and needs to be handled with care.

---

### TOOLS:

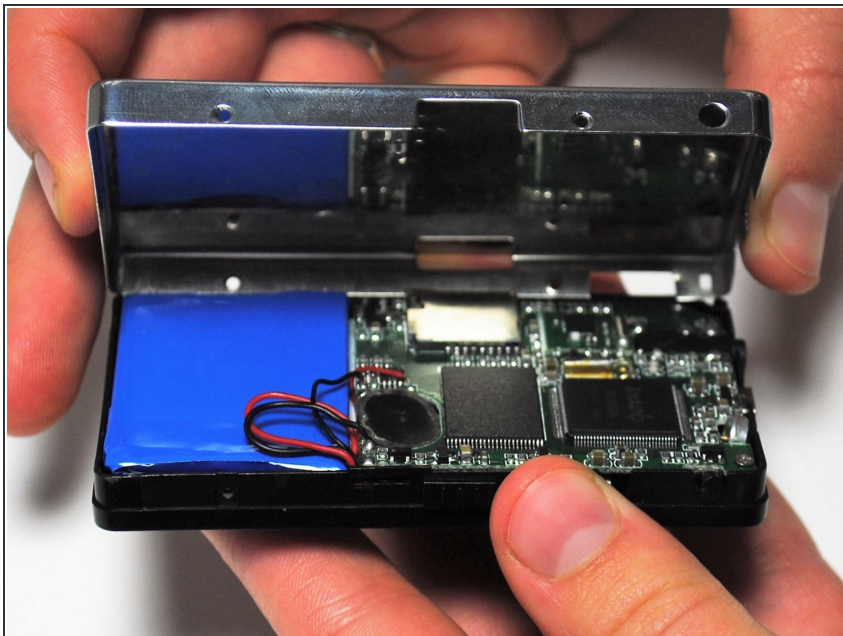
- [Soldering Iron](#) (1)
  - [Phillips #0 Screwdriver](#) (1)
-

## Step 1 — Back Cover Replacement Guide



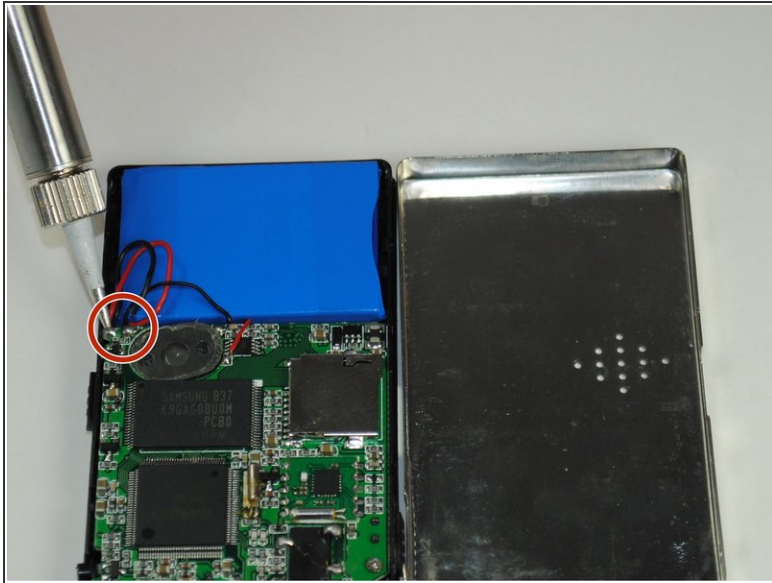
- Unscrew the four screws (size: 3.175mm) on the left and right side of the Element Electronics GC-1020 device using the PH#0 screwdriver.

## Step 2



- Carefully pull the back of the device (the silver portion) apart from the rest of the device.
- ⓘ If you pull back too forcefully the power button would move out of place.

## Step 3 — Battery



- Then remove the battery from the device through soldering the black and red wires connected to the motherboard.
- ⓘ This replacement will require a soldering station.
- ⓘ To find out more on soldering refer to the [Soldering and Desolder](#) page to help you through this process.

To reassemble your device, follow these instructions in reverse order.