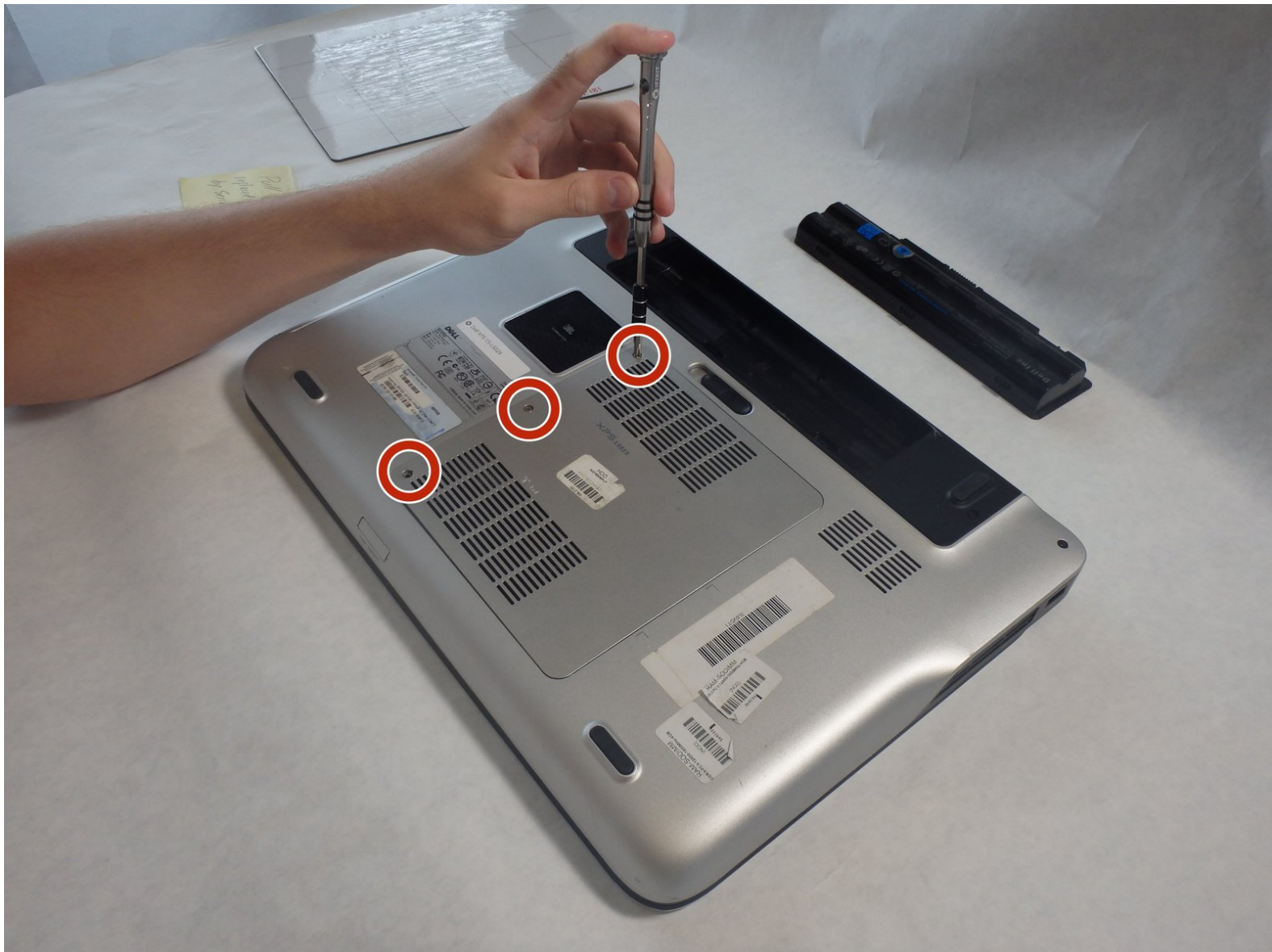




# Dell XPS 15-L502X Back Panel Replacement

Replacing the back panel on a Dell XPS 15-L502X.

Written By: Vishal



---

## INTRODUCTION

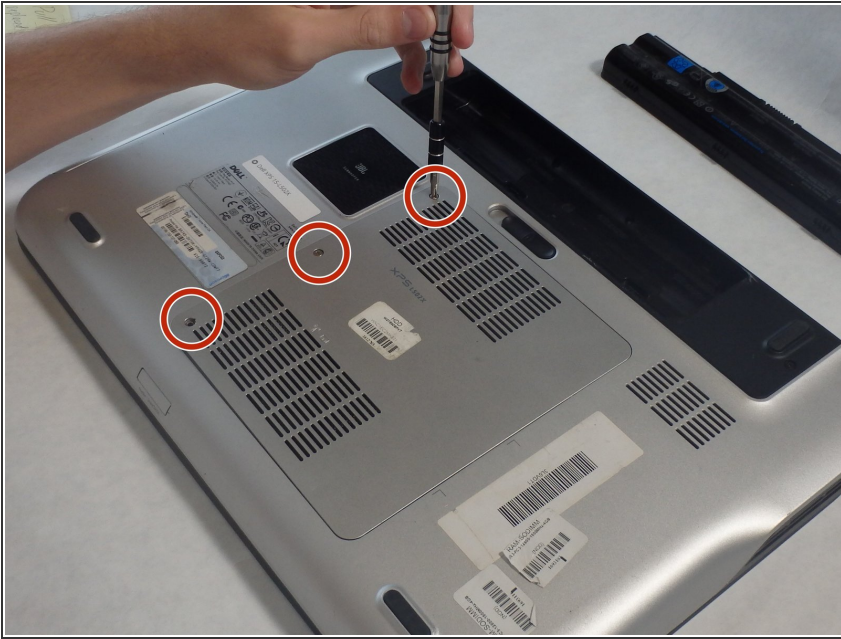
The back panel protects the RAM as well as a few other key internal components. It also covers the screen connection. Use this guide to remove the back panel and access the major components of your laptop.

---

### TOOLS:

- [Phillips #2 Screwdriver](#) (1)

## Step 1 — Back Panel



- Remove the black battery bar from the computer before continuing any further operations.
- Unscrew the three 5mm Phillips #2 screws on the left side of the back panel.

## Step 2



- Lift up the left side of the panel.
- There are three tabs holding in the right side of the panel. Pull the panel up and away from these tabs to remove it.

To reassemble your device, follow these instructions in reverse order.