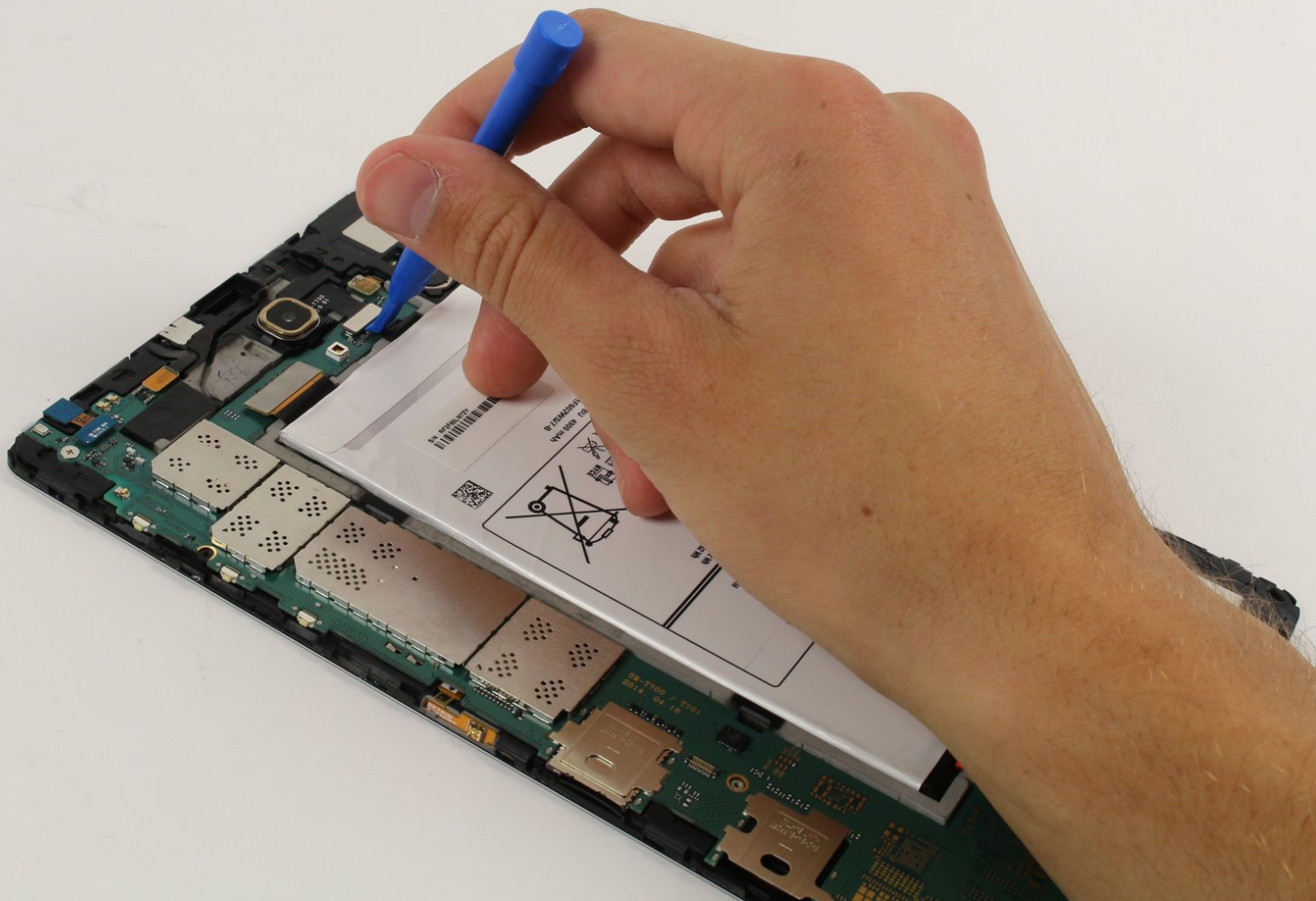




Samsung Galaxy Tab S 8.4 Rear Facing Camera Replacement

Learn to replace a cracked or broken rear-facing camera on your Samsung Galaxy Tab S 8.4.

Written By: Trent Chapman



INTRODUCTION

If the device has been dropped or damaged, it is likely that the rear-facing camera may become cracked or scratched. This guide will show you how to replace the rear-facing camera.

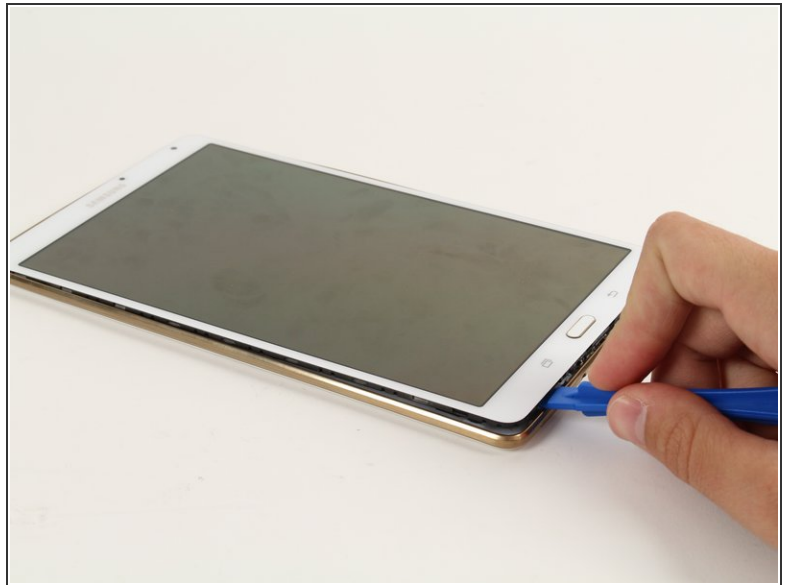
TOOLS:

- [iFixit Opening Tools](#) (1)

PARTS:

- [Galaxy Tab S 8.4 \(Wi-Fi\) Rear Camera](#) (1)
- [Galaxy Tab S 8.4 \(Wi-Fi\) Front Camera](#) (1)

Step 1 — Back Cover



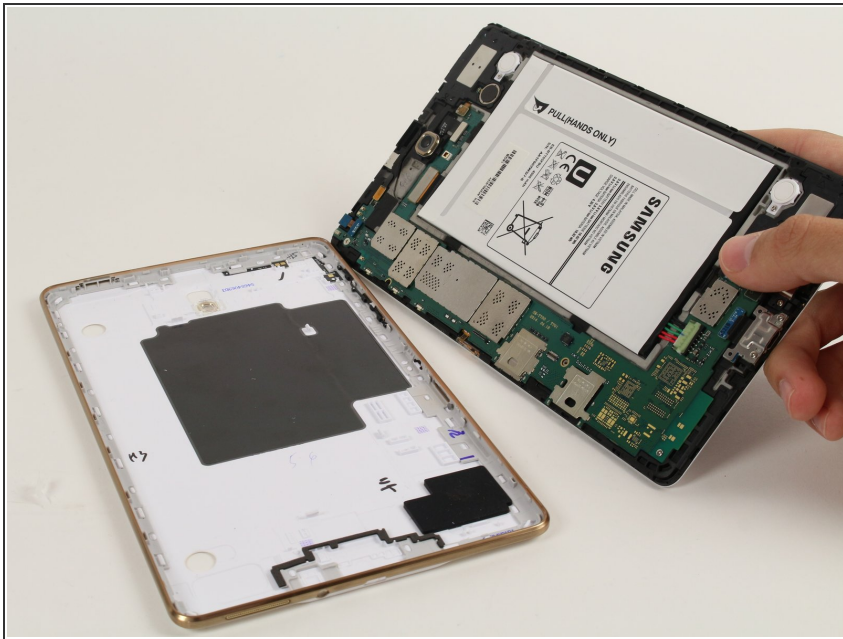
- Place the plastic opening tool between the face of the display and rim of the back cover of the device.
- Move the plastic opening tool in a downward motion until you see separation between the tablet and back cover.

Step 2



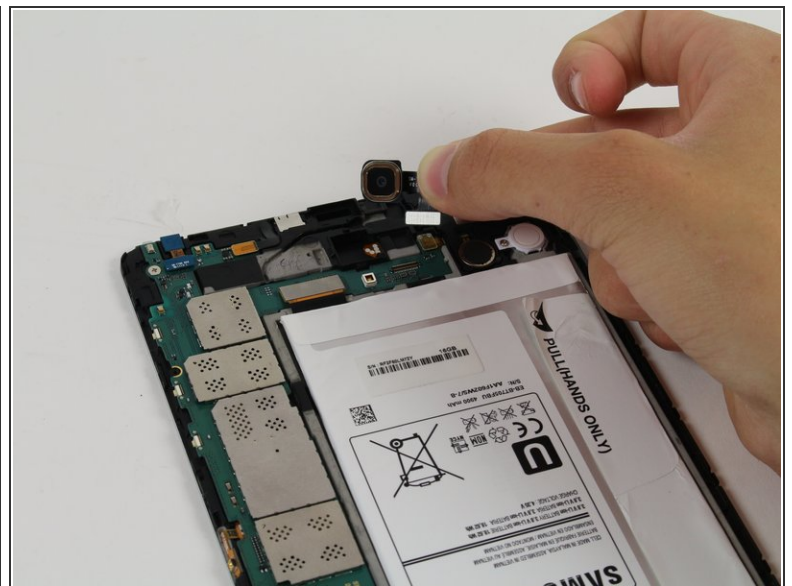
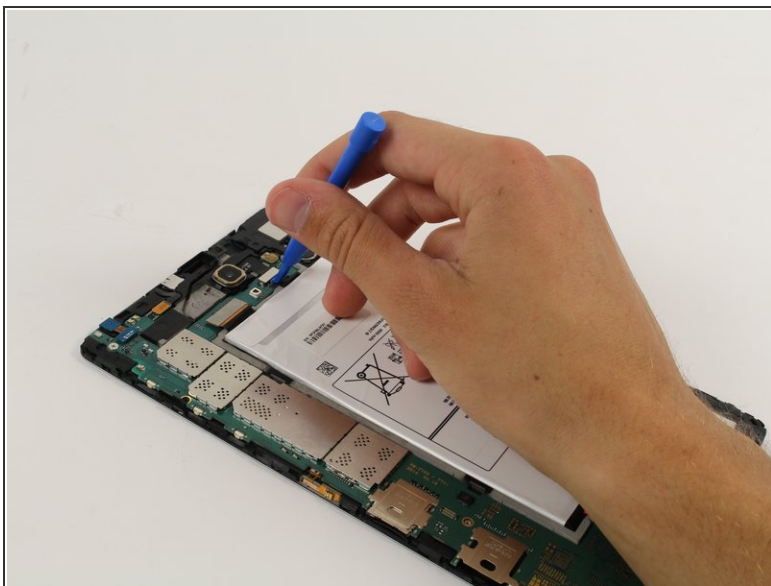
- By sliding the plastic opening tool around the rim of the device, carefully continue to pry apart the screen and back cover.
- ⓘ Try to separate evenly on all sides until the screen detaches from the device backing completely.
- ⓘ If this is the first time removing the back cover, it will be rather difficult to separate it from the tablet.

Step 3



- Remove the back cover after the entire rim is disconnected.

Step 4 — Rear Facing Camera



- Gently pry the camera connector away from the motherboard with a plastic opening tool or your fingers.
- Lift the rear-facing camera module up and away from the device.

To reassemble your device, follow these instructions in reverse order.