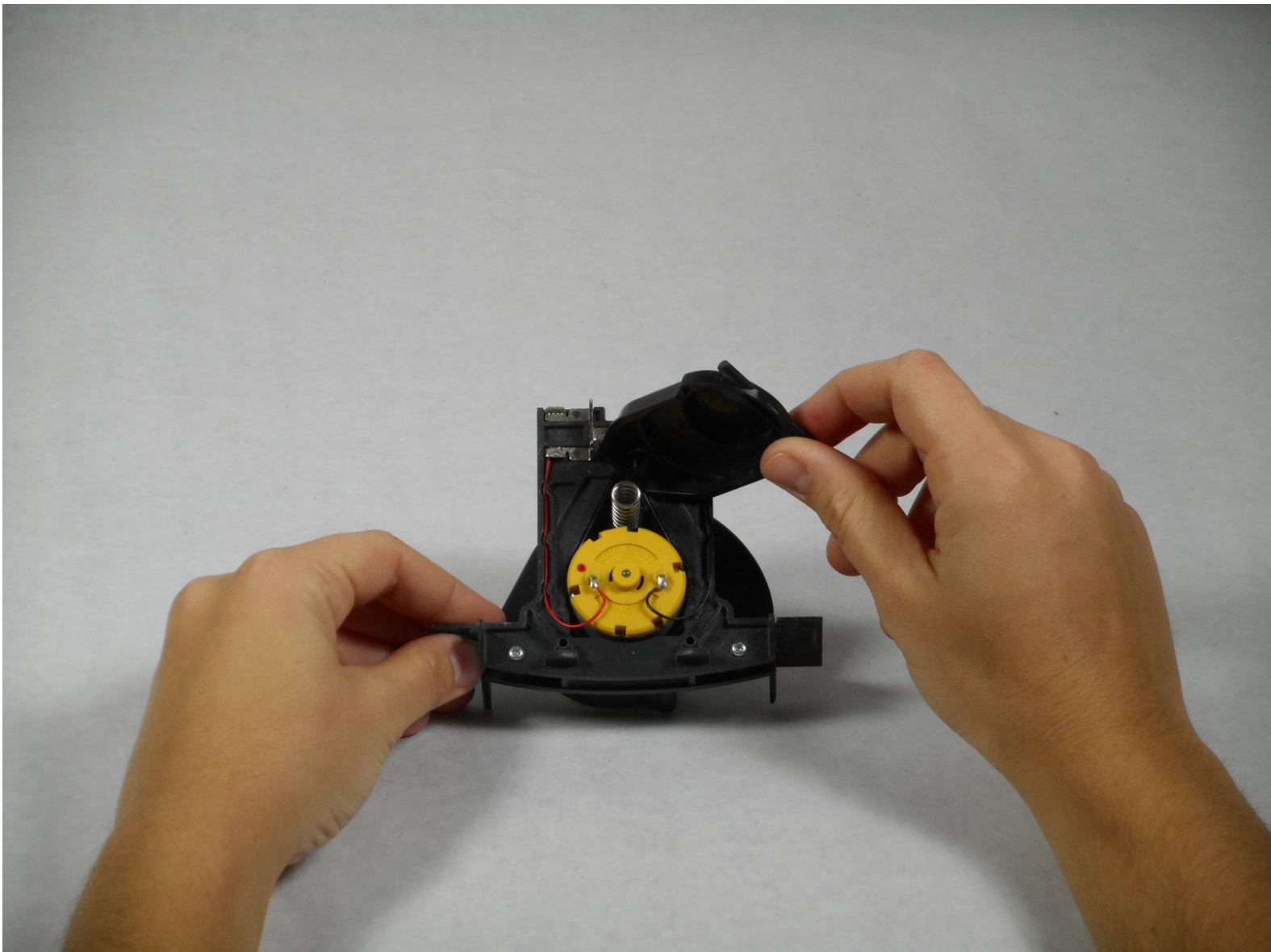




iRobot Roomba 560 Fan Replacement

Replace the fan inside of the Roomba 560's vacuum bin.

Written By: TJ Tamura



INTRODUCTION

This guide outlines how to replace the entire fan unit rather than fixing the entire unit itself, because doing so would require advanced techniques such as soldering. This replacement is needed when dirt clogs the fan due to the close proximity between the fan and the vacuum bin.

TOOLS:

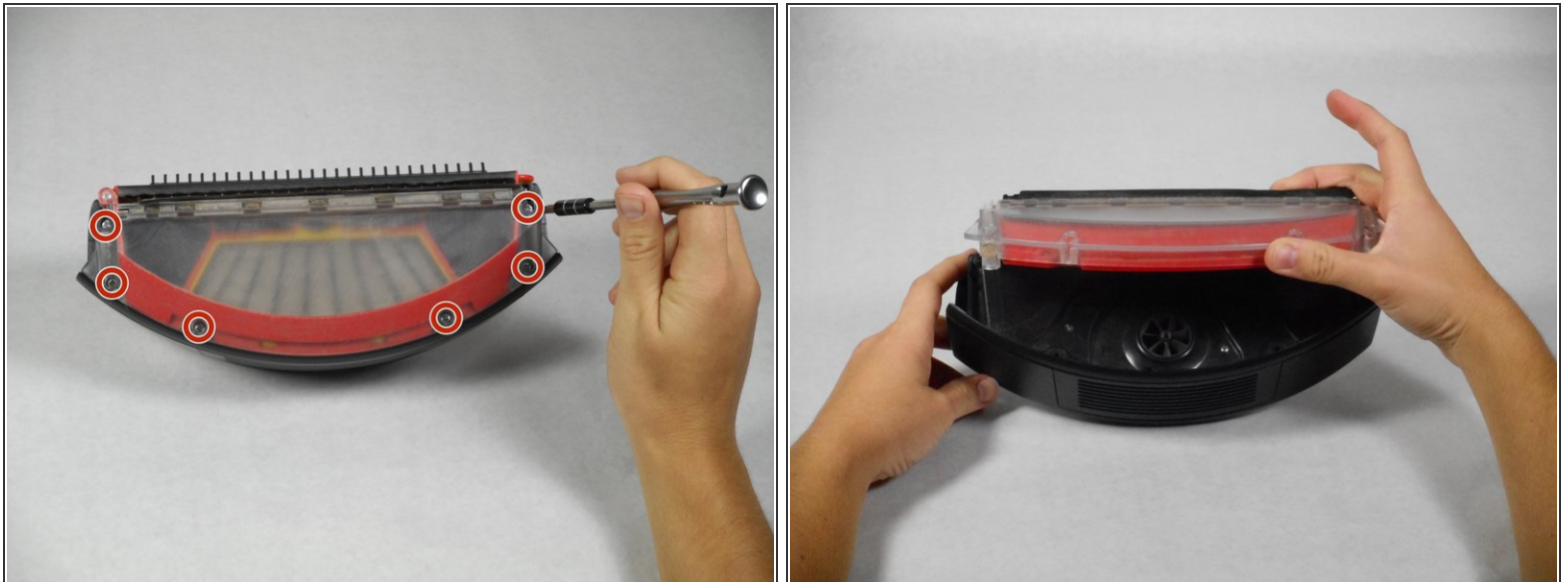
- [JIS #1](#) (1)

Step 1 — Fan



- Press the black circular button on the back end of the Roomba and pull the bin out towards you to remove the vacuum bin.

Step 2



- Lay the vacuum bin down and remove the six 15 mm screws around the outside of the vacuum bin using the Phillips JIS #1 driver.
- Remove the top of the vacuum bin by pulling it straight up.
 - ⚠ The bin is composed of two parts (the clear top casing and the red bottom filter). To avoid a mess, be careful to not let these two pieces detach, unless over a trash bin.

Step 3



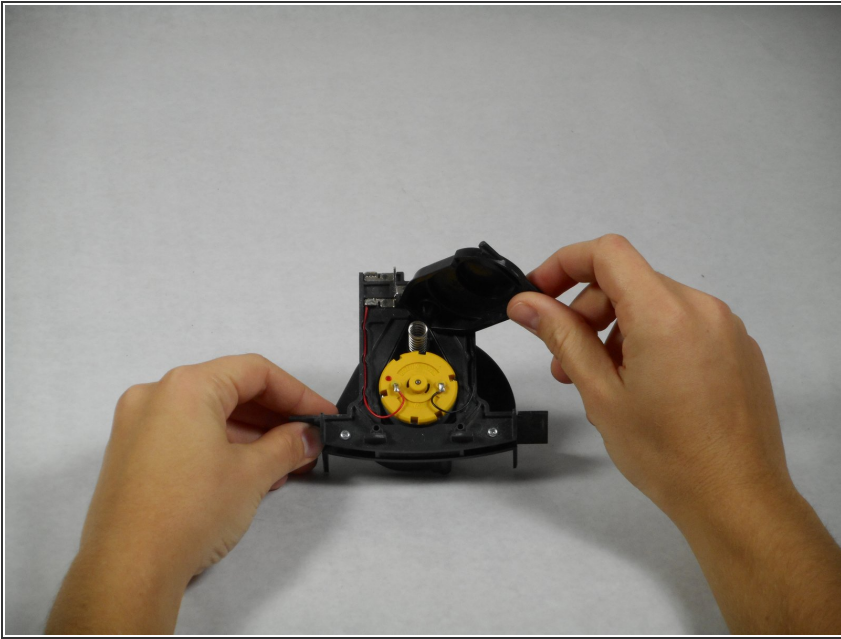
- Remove the three 10 mm screws that surround the fan using the Phillips JIS #1 driver.
- Remove the casing that surrounds the fan by pulling it straight up.
- ⓘ The casing is composed of 2 parts (the large top casing, and a small air filter). If these parts detach, they are very easy to put back together. Do not lose the air filter.

Step 4



- Turn over the remainder of the fan casing and remove the single 15mm screw, using the Phillips JIS #1 screwdriver.
- Remove the casing from the fan and battery component by pulling it straight up.

Step 5



- Remove the small black button from the top of the battery.
- ⓘ Save the spring and the button cover. The remainder of the fan assembly (yellow motor and the black housing) will need to be replaced as a unit.

To reassemble your device, follow these instructions in reverse order.