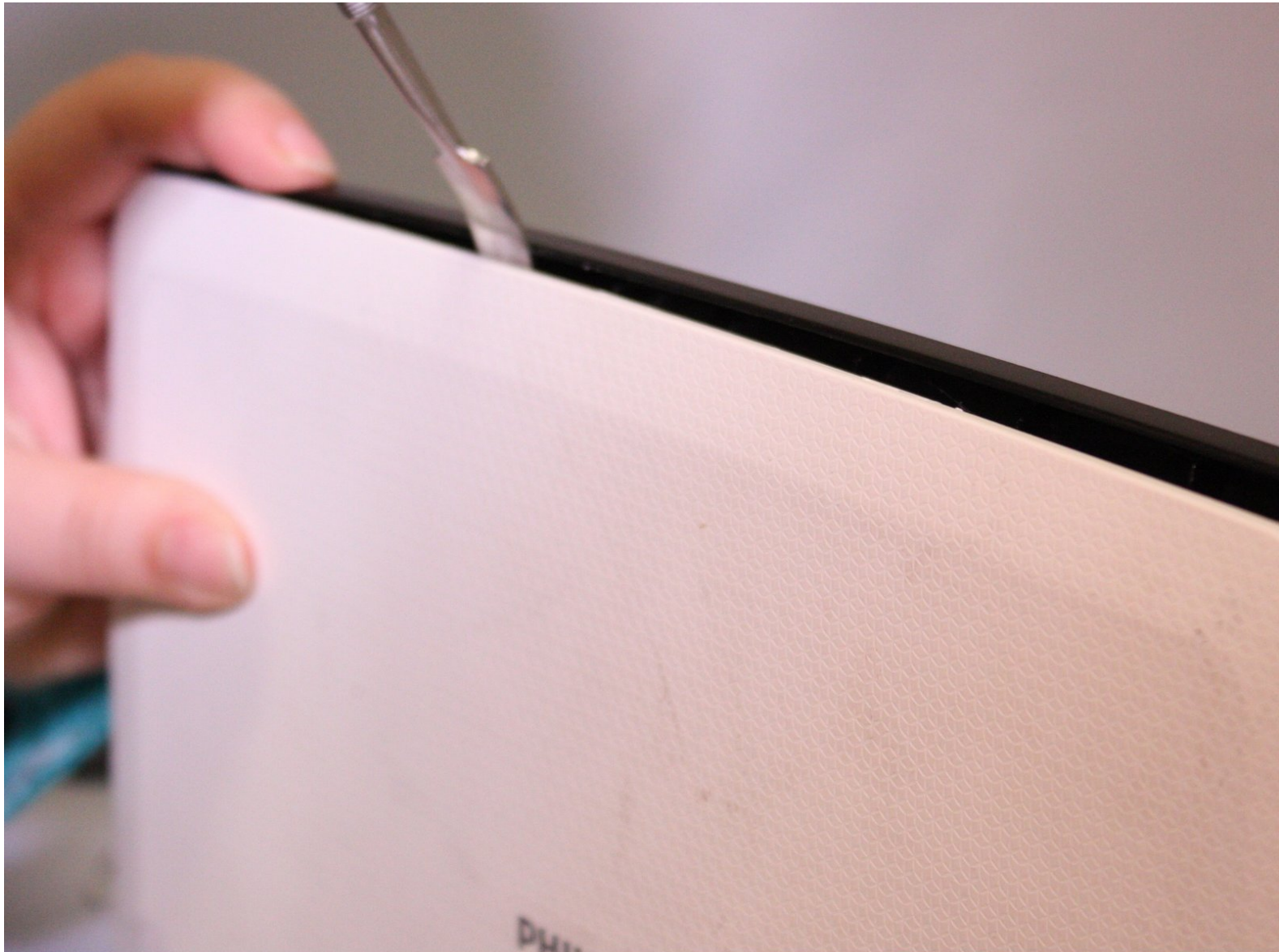




# Philips PD9000 37 White Outer Housing Replacement

Replace the white plastic housing on the outside of the player if it is cracked or broken.

Written By: Julia Sheremet



---

## INTRODUCTION

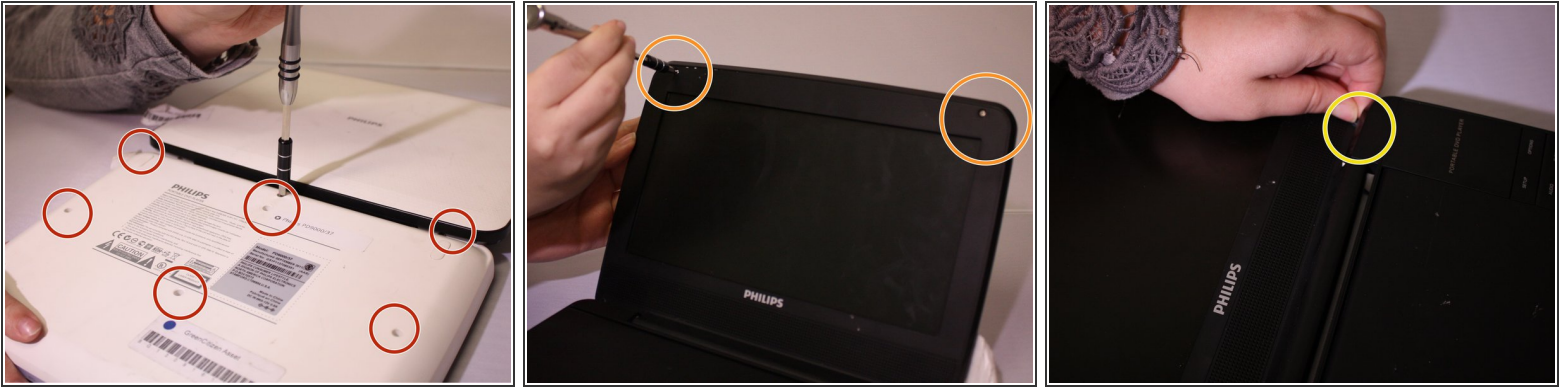
This guide will help the user replace the white plastic housing of the player, and will allow the user to replace inner parts.

---

### TOOLS:

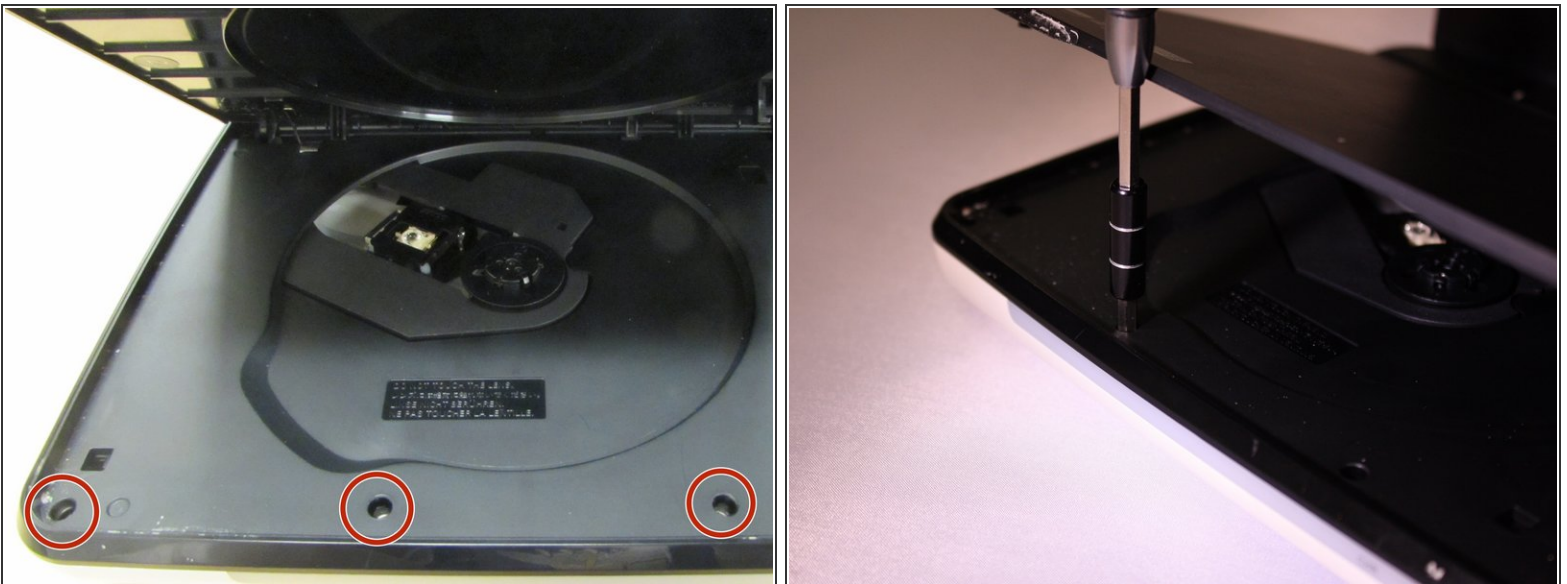
- [Metal Spudger](#) (1)
  - [Phillips #0 Screwdriver](#) (1)
-

## Step 1 — White Outer Housing



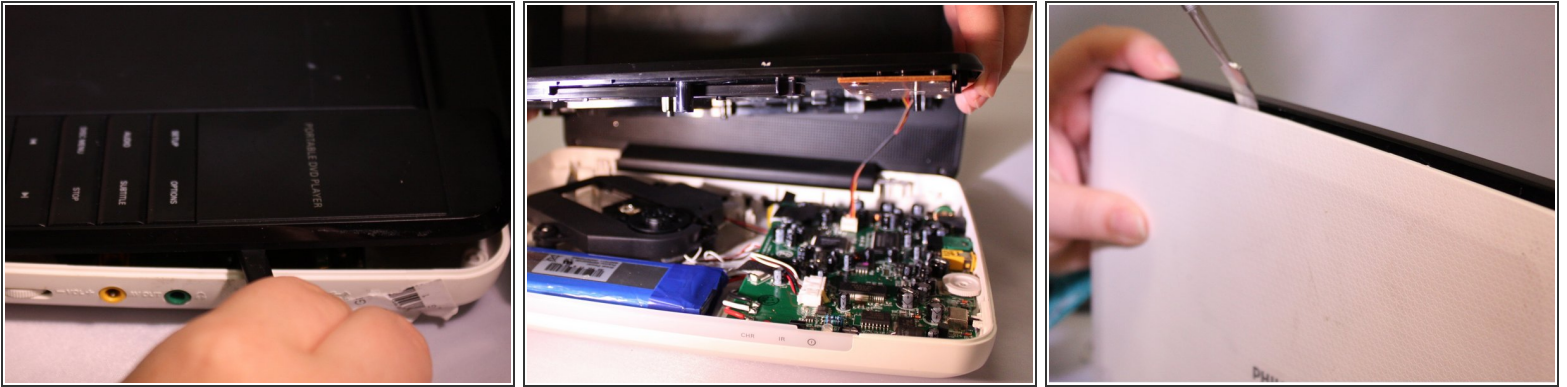
- Lay the player flat so the bottom outside is showing. Using the Phillips #0 screwdriver, unscrew all the housing screws on the bottom of the player.
- Have the player sitting upright, remove the rubber stoppers in order to get to the screw. Unscrew the inside screws by the screen using the Philips #0 screwdriver.
- Remove the rubber stoppers for the bottom two screws as well. Unscrew the middle two screws.

## Step 2



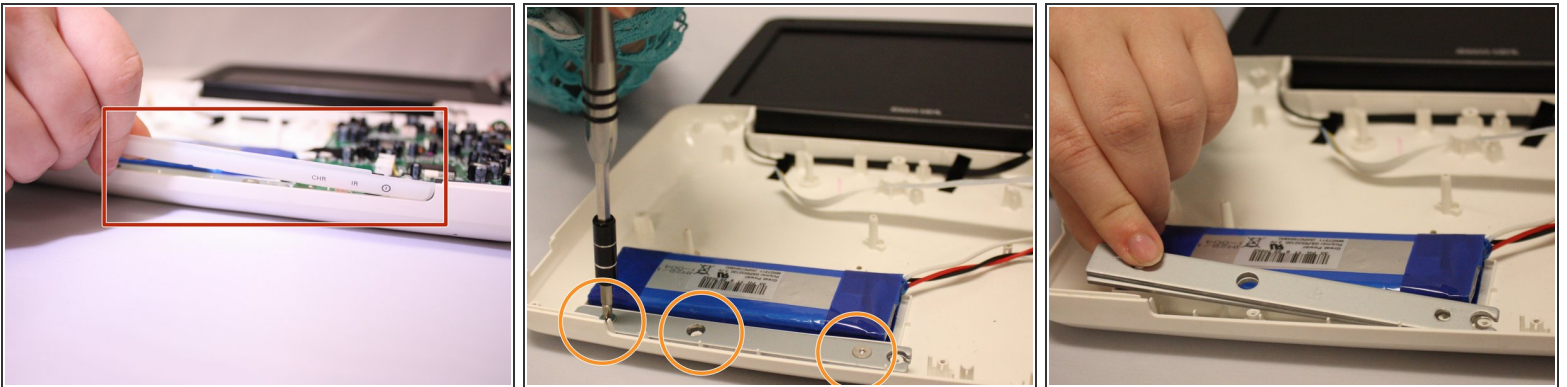
- Open the disc flap and remove the screws inside with the Phillips #0 screwdriver. There will be three screws.

### Step 3



- Start removing the inside black face plate of the player by using a prying method between the white outer housing and the black face plate with a metal spudger.
- Pull the black face plate off once you have pried it from the white housing. The bottom inside layer should pop off.
- Using the same prying method with the metal spudger, start prying off the screens white outer housing.

### Step 4



- The light panel on the front can just pop right off.
- To remove the metal bar against the battery, unscrew the screws with the Phillips #0 screwdriver.
- After unscrewing you can just lift the metal bar off.

To reassemble your device, follow these instructions in reverse order.