



# HP EliteOne 800 G1 Removing Stand Replacement

Prerequisite Only

Written By: Michael Ewing



---

## INTRODUCTION

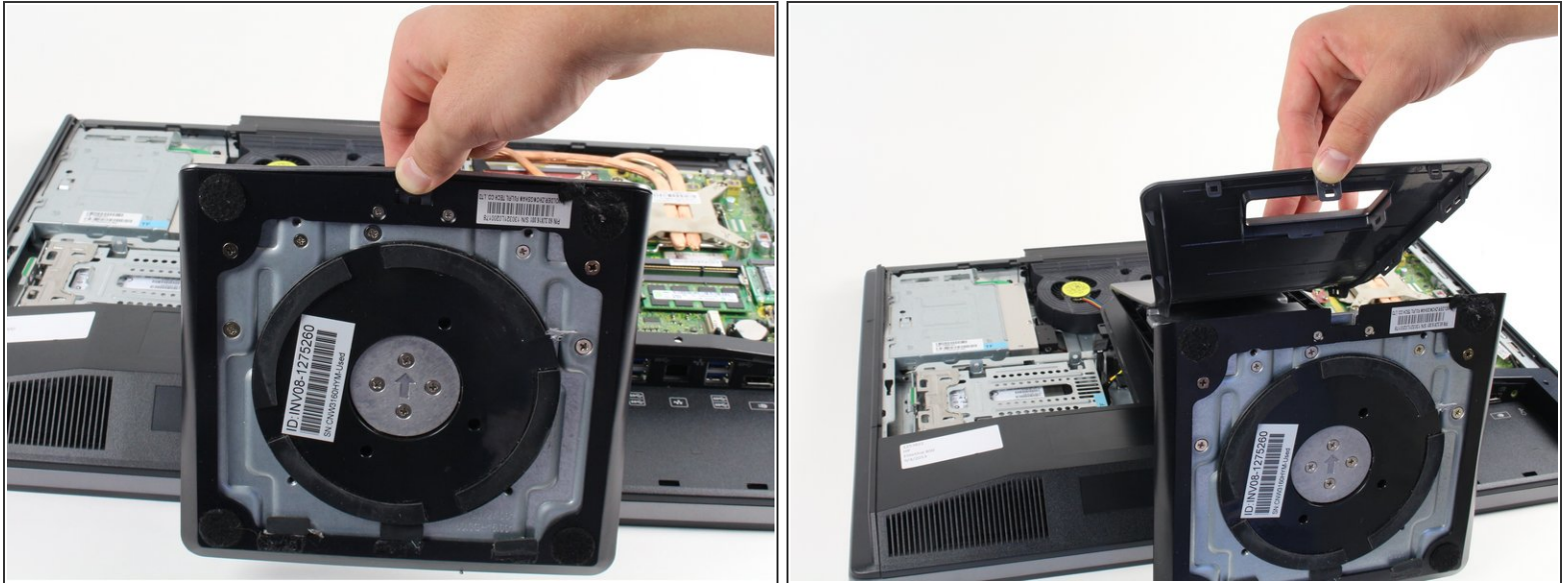
Prerequisite Only

---

### TOOLS:

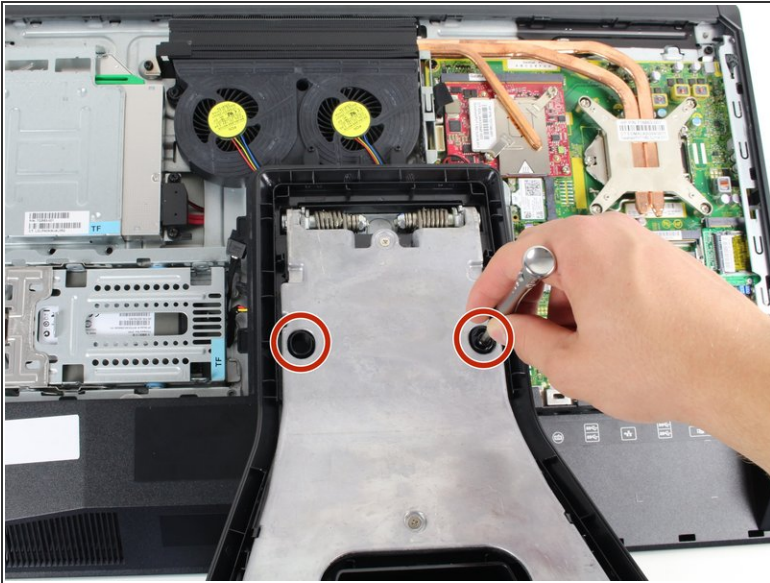
- [T15 Torx Screwdriver](#) (1)
-

## Step 1 — Removing Stand



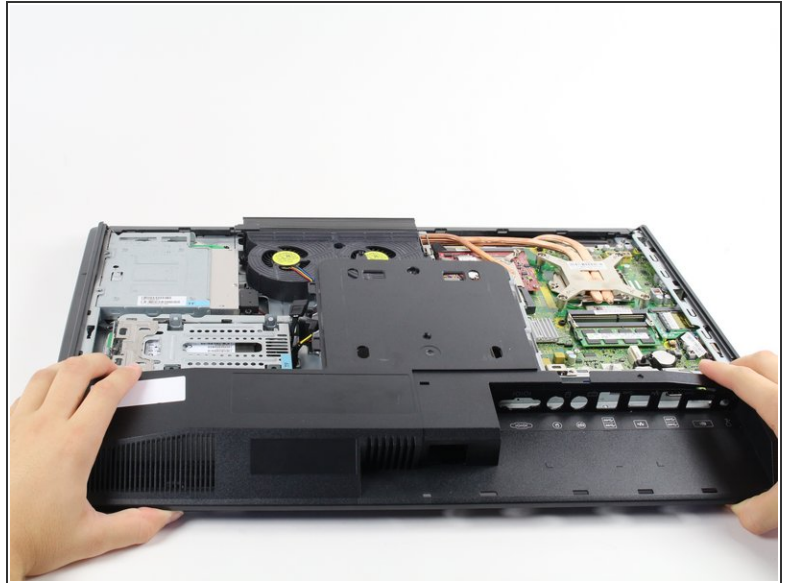
- Press locking latch on the bottom of the base of the stand.
- Pull the plastic cover off of the stand.

## Step 2



- Use a Torx T15 driver and stick it through the holes on the stand in order to remove the two 12mm screws on the back of the main unit.
- Tilt stand and lift up to remove it.

## Step 3



- Use a Torx T15 driver to remove the single 10mm screw on the back panel.
- Pull the back panel toward the bottom of the device to remove it.

To reassemble your device, follow these instructions in reverse order.