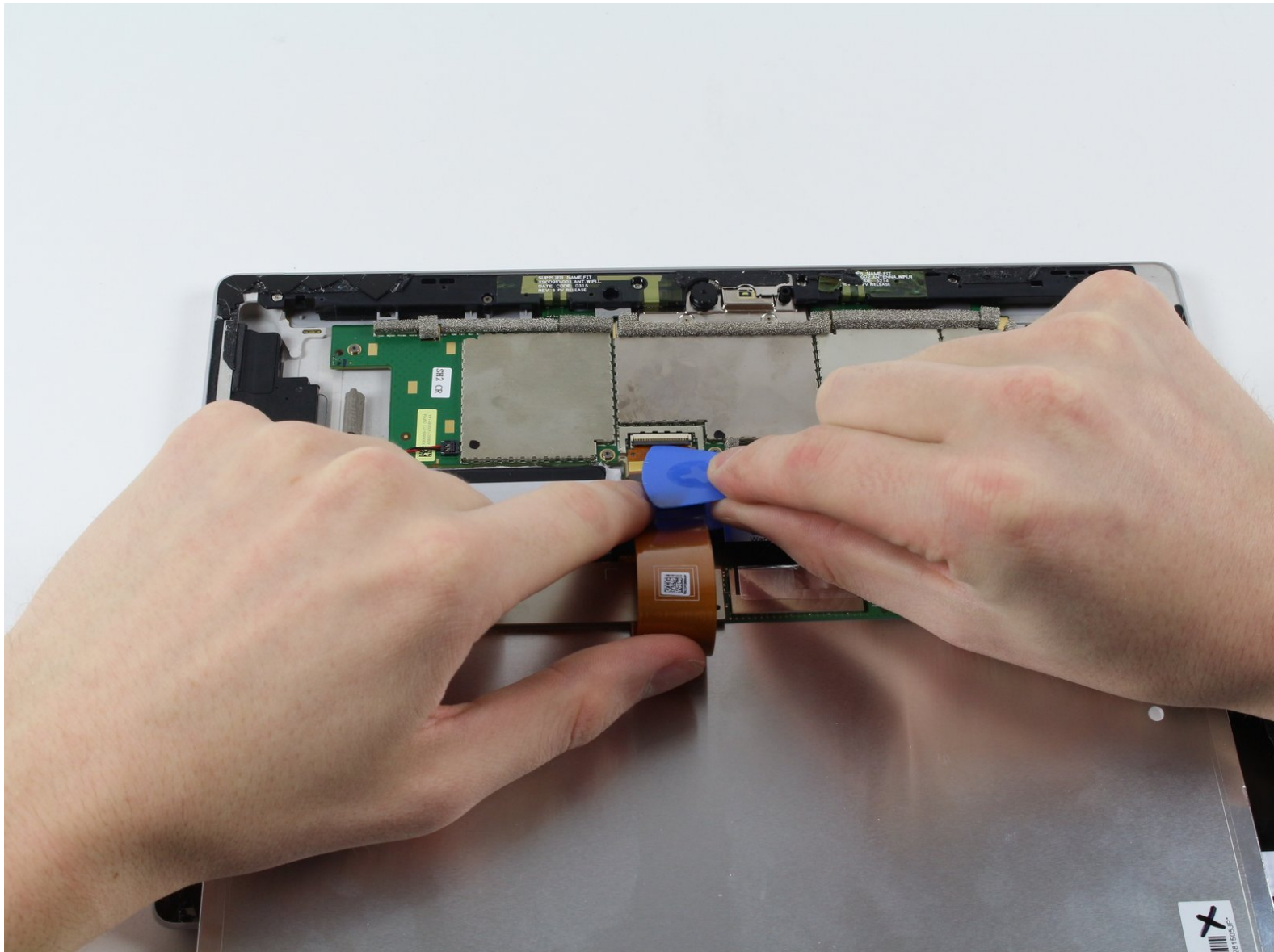




Microsoft Surface 3 Display Replacement

Replacing the screen on the Surface 3 is really the only good reason to go about replacing anything in it. You will likely end up breaking the screen and needing to replace it with any of the other replacement guides.

Written By: Harold Hall



INTRODUCTION

Replacing the screen on the Surface 3 is really the only good reason to go about replacing anything in it. You will likely end up breaking the screen and needing to replace it with any of the other replacement guides. This guide may help you to identify how to take it off without breaking it (a major accomplishment).



TOOLS:

- [iOpener Kit](#) (1)
- [Microwave](#) (1)
- [Spudger](#) (1)
- [iFixit Opening Picks set of 6](#) (1)



PARTS:

- [Surface 3 Screen](#) (1)

Step 1 — Casing



- Warm up an iOpener following the instructions found in the [iOpener guide](#).
- Place the warm iOpener on top of the edges of the screen. This heat will weaken the strength of the adhesive between the display and body.

Step 2



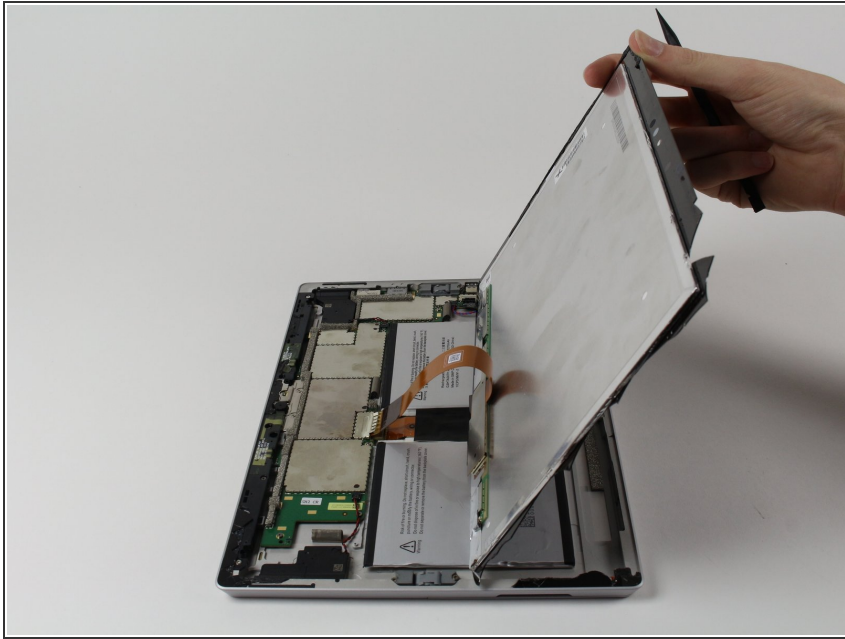
- Use iFixit opening picks to wedge under the edge of the screen at the speaker port.
 - ⓘ *This may take significant force. A fingernail might work better for the initial lift*
 - ⚠ *If you push straight down near the edge you will go through the speaker mesh and possibly end up damaging your speaker; try to push the pick in at a shallow angle.*

Step 3



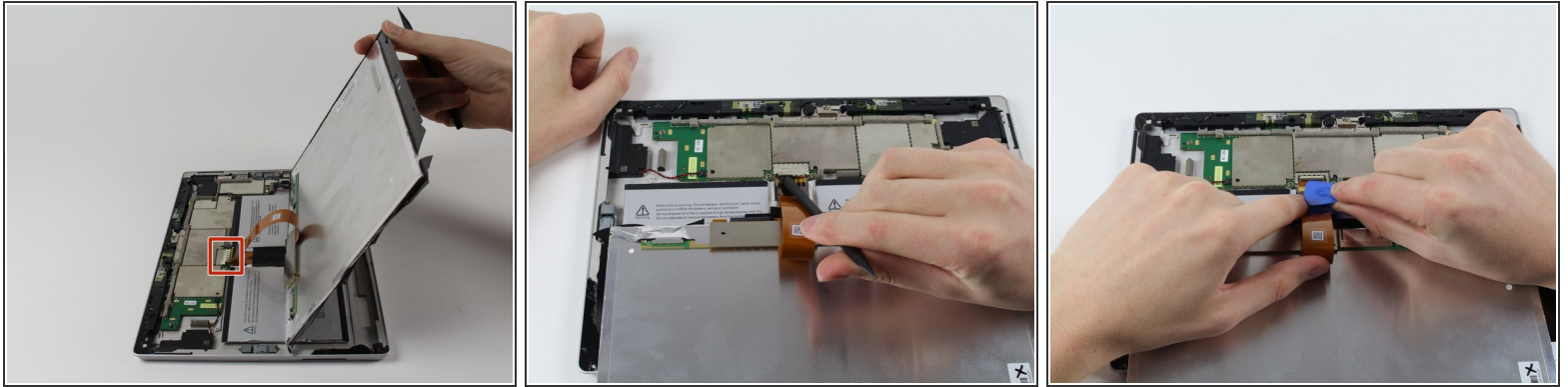
- Carefully try to work your way around the device using the picks, reapplications of the heated iOpener, and luck.
- ⓘ If you break the glass on one side you might want to try again starting from the other side so that you have a clean, unbroken, edge on that side.
- ⚠ While the glass on this display is not particularly sharp when broken, it is still broken glass and you should be careful with it.

Step 4



- Flip the display over so that parts underneath it are easily accessible.
- ⚠ Do not pull out the display as it is still attached to the motherboard.
- ⓘ If you are replacing the display, or want it out of the way, continue with the [display replacement guide](#) steps.

Step 5 — Display



⚠ The RF shield that you are about to remove will be damaged in the process. you may be able to bend it back into shape once you remove it.

- Locate the point where the display is still attached to the motherboard.
- Use a flat spudger to pry off the RF shielding/bracket retainer.
- Use a thin guitar pick to release the snap pin from the display to the motherboard.

⚠ The little black piece (the latch for the ZIF connector) that you have just flipped up is no longer held in place by anything due to Microsoft trying to make the device slimmer. It will fall out and be lost for all eternity unless you carefully keep track of it.

To reassemble your device, follow these instructions in reverse order.