



HP Compaq 6910p Hard Drive Replacement

This guide shows you how to replace the hard drive of an HP Compaq 6910p.

Written By: Tyler Fricks



INTRODUCTION

In this guide, we will illustrate how to remove and replace the hard drive for this device. Tools required include thumbs and a Phillips screwdriver.

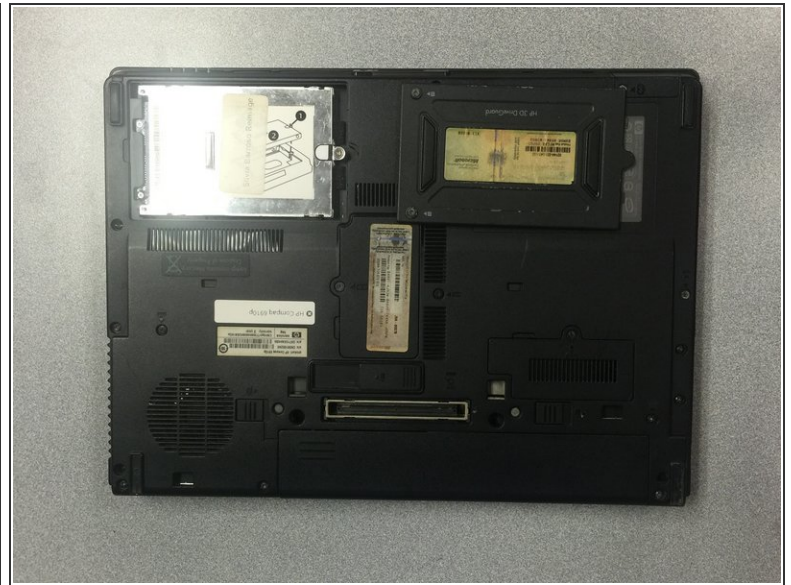
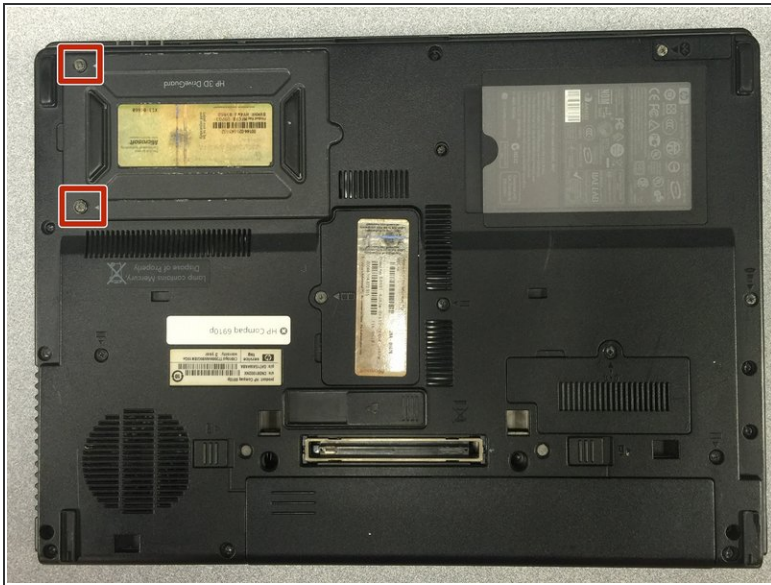
TOOLS:

- [Phillips #1 Screwdriver](#) (1)

PARTS:

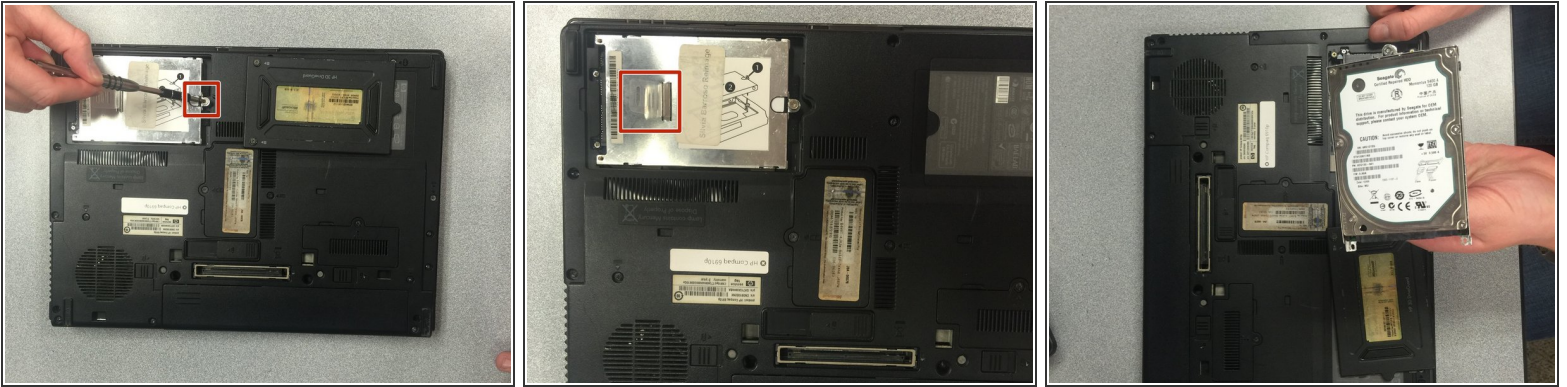
- [120GB SATA Hard Drive Western Digital WD1200BEVS](#) (1)

Step 1 — Hard Drive



- Loosen the two 1.5 cm Phillips #1 screws that attach the cover of the hard drive .
- Lift up the cover.

Step 2



- Loosen the 1.5 cm Phillips #1 screw attaching the hard drive to the laptop.
 - Locate the tab on the hard drive.
 - Use this tab to pull the hard drive toward the right side of the case.
- ⚠ Do not pull up on the tab!
- Remove the hard drive.

To reassemble your device, follow these instructions in reverse order.