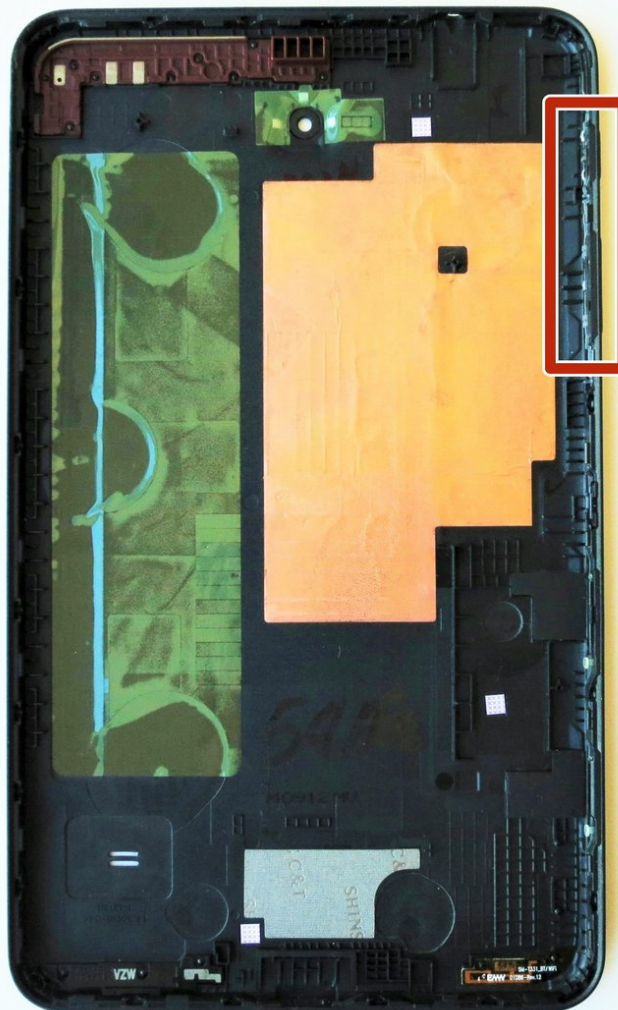




# Samsung Galaxy Tab 4 8.0 Verizon Power/Lock and Volume Button Replacement

Breakage of either the power/lock button or volume button can be easily fixed with the following guide.

Written By: Ofelia Cruz



---

## INTRODUCTION

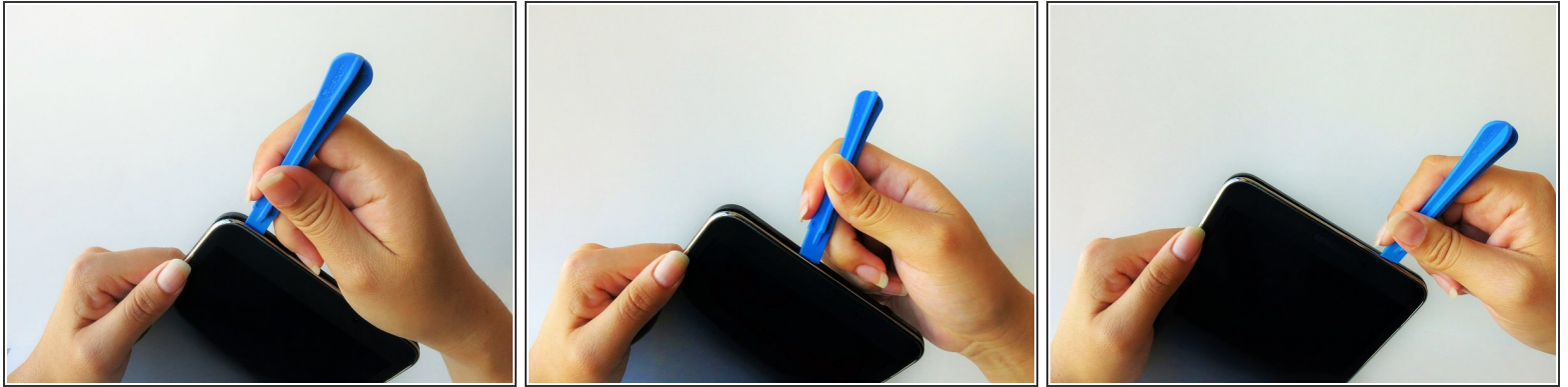
Volume and lock buttons are crucial to facilitate the use and safety of any device. Replacing these components are a breeze. For this guide, all you need are these easy steps and a few tools to facilitate the process.

---

### TOOLS:

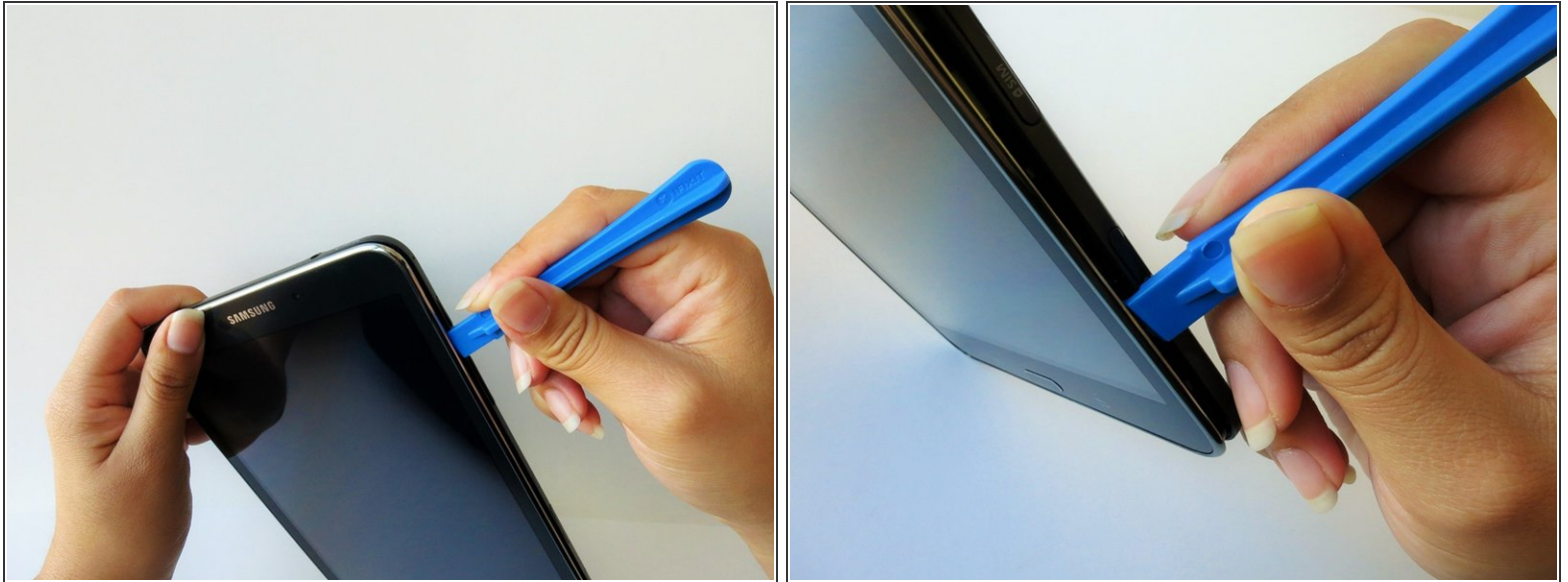
- [iFixit Opening Tools](#) (1)
  - [Spudger](#) (1)
  - [Tweezers](#) (1)
-

## Step 1 — Rear Case



- ⓘ Before disassembling your Samsung Galaxy Tab 4 8.0, be sure it is powered off.
- At the top of the tablet, nudge the blue plastic opening tool between the back plastic casing and the front panel's metal rim.
- ⚠ Do not use excessive force when prying the clips, fastening the casing together, open because they can easily break.

## Step 2



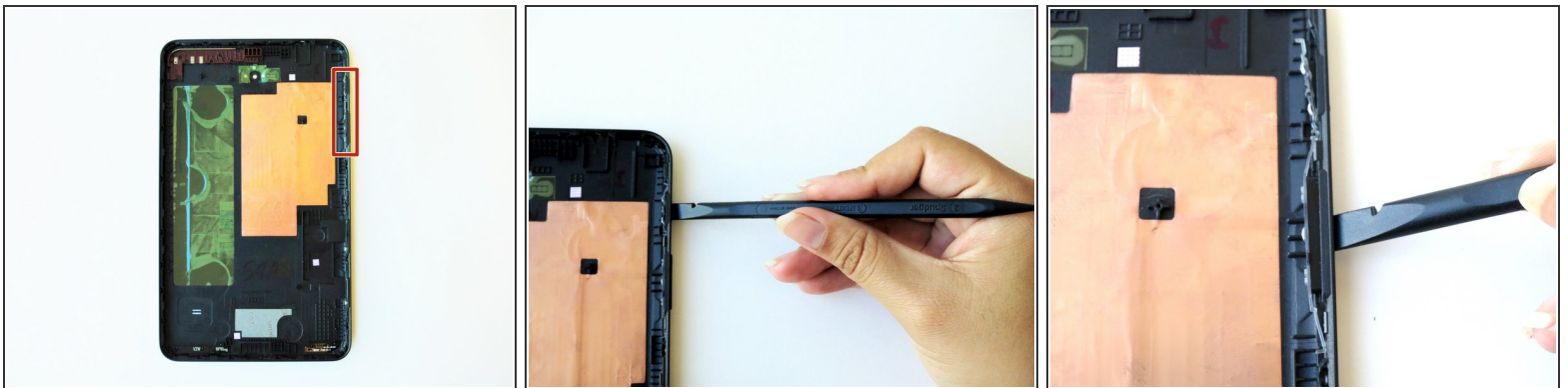
- Continue prying the blue plastic opening tool along the perimeter of the tablet to separate the back plastic casing from the front assembly panel.
- ⓘ As right-handers, we found it easiest to move clockwise and use more pressure around the corners to facilitate the process.
- ⓘ You might hear several popping noises caused by the plastic clips coming undone.

### Step 3



- To avoid damaging the screen, gently set the tablet with the LCD screen faced down.
- Firmly grasp the back plastic casing and lift it away from the front assembly panel.

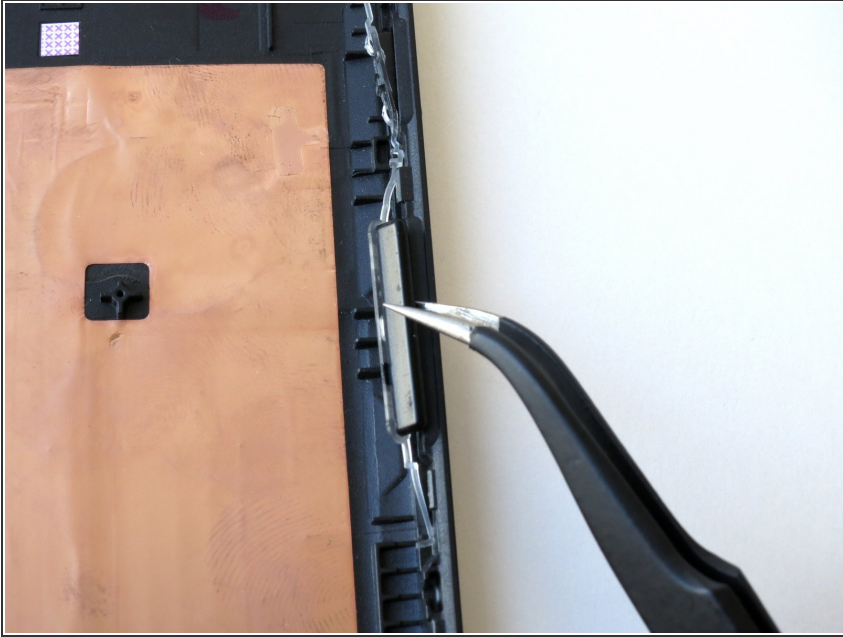
### Step 4 — Power/Lock and Volume Button



- The button will be attached to the back casing of the tablet.
- Using the spudger, first push the power/lock button then the volume button inwards from the opening towards the center of the tablet.

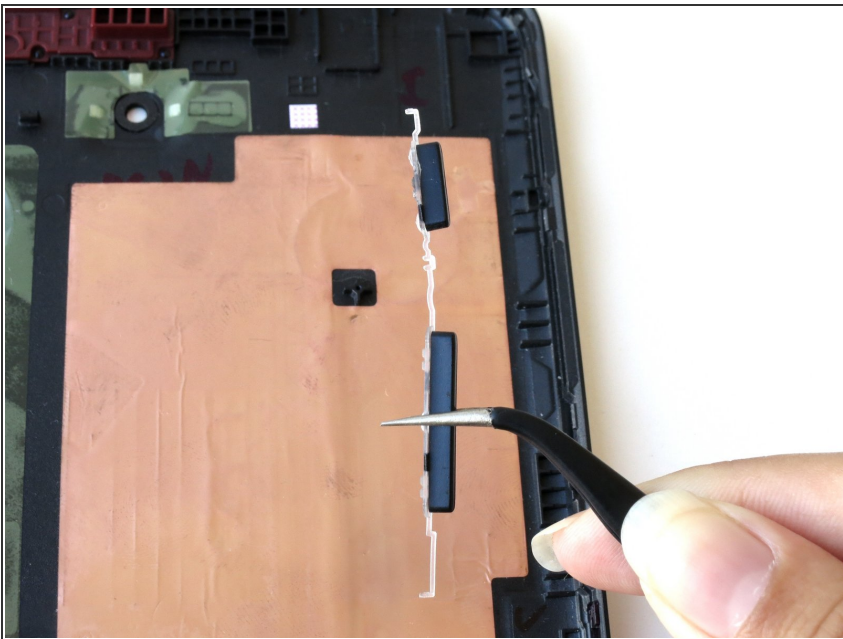


## Step 5



- Using a precision tweezer, detach the clear plastic wire from the back casing by pulling the wire out of its slot.

## Step 6



- Grab the power/volume button with a precision tweezer to completely lift the buttons out of the back casing.

To reassemble your device, follow these instructions in reverse order.

This document was last generated on 2019-07-31 07:29:09 PM.