



# Lenovo Yoga 2 Pro Wireless Card Replacement

This guide will take you through the steps necessary to replace the wireless module in your Lenovo Yoga 2 Pro.

Written By: Thomas Simko



## INTRODUCTION

The wireless module allows your computer to connect to the internet via WiFi.



### TOOLS:

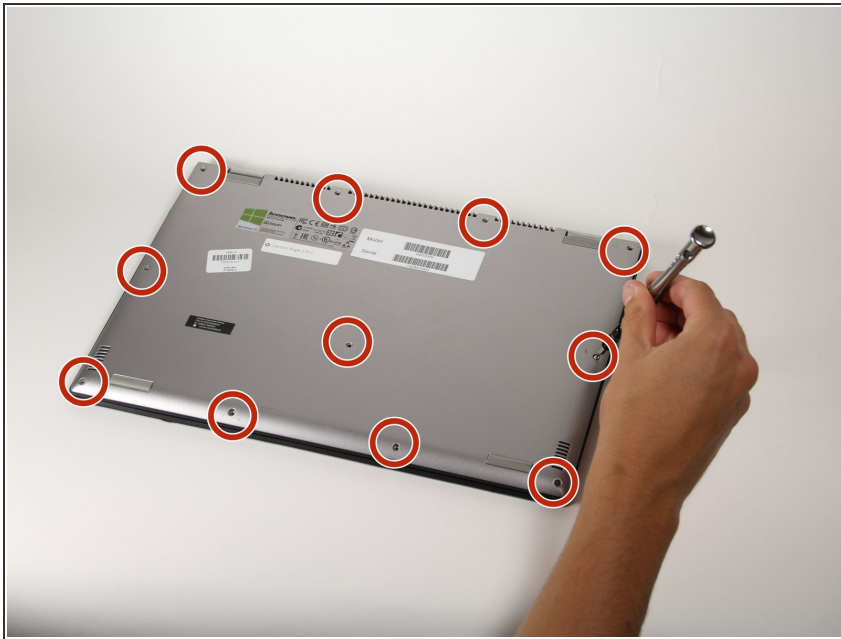
- [Phillips #00 Screwdriver](#) (1)
- [T5 Torx Screwdriver](#) (1)
- [Spudger](#) (1)



### PARTS:

- [Intel Wireless-AC 7260NGW](#) (1)

## Step 1 — Wireless Card



- ✦ Please ensure that the laptop is turned off before beginning.
- Using a T5 Torx screwdriver, remove the eleven 1/4" screws from the back of the laptop.

## Step 2



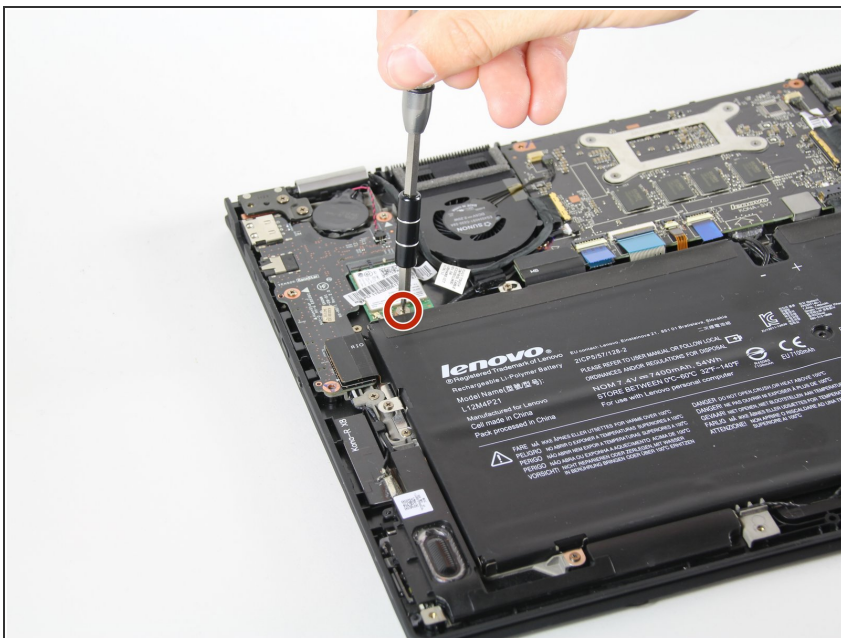
- Gently lift off the back cover.

### Step 3



- Locate the wireless module above the battery in the top left corner of the computer.
- Using a spudger, disconnect the two metal connectors by popping the metal piece up from the wireless module.

### Step 4



- Remove the one 1/16" screw using a Phillips #00 screwdriver.



## Step 5



- Slide the wireless module towards the battery and lift out of the laptop.

To reassemble your device, follow these instructions in reverse order.