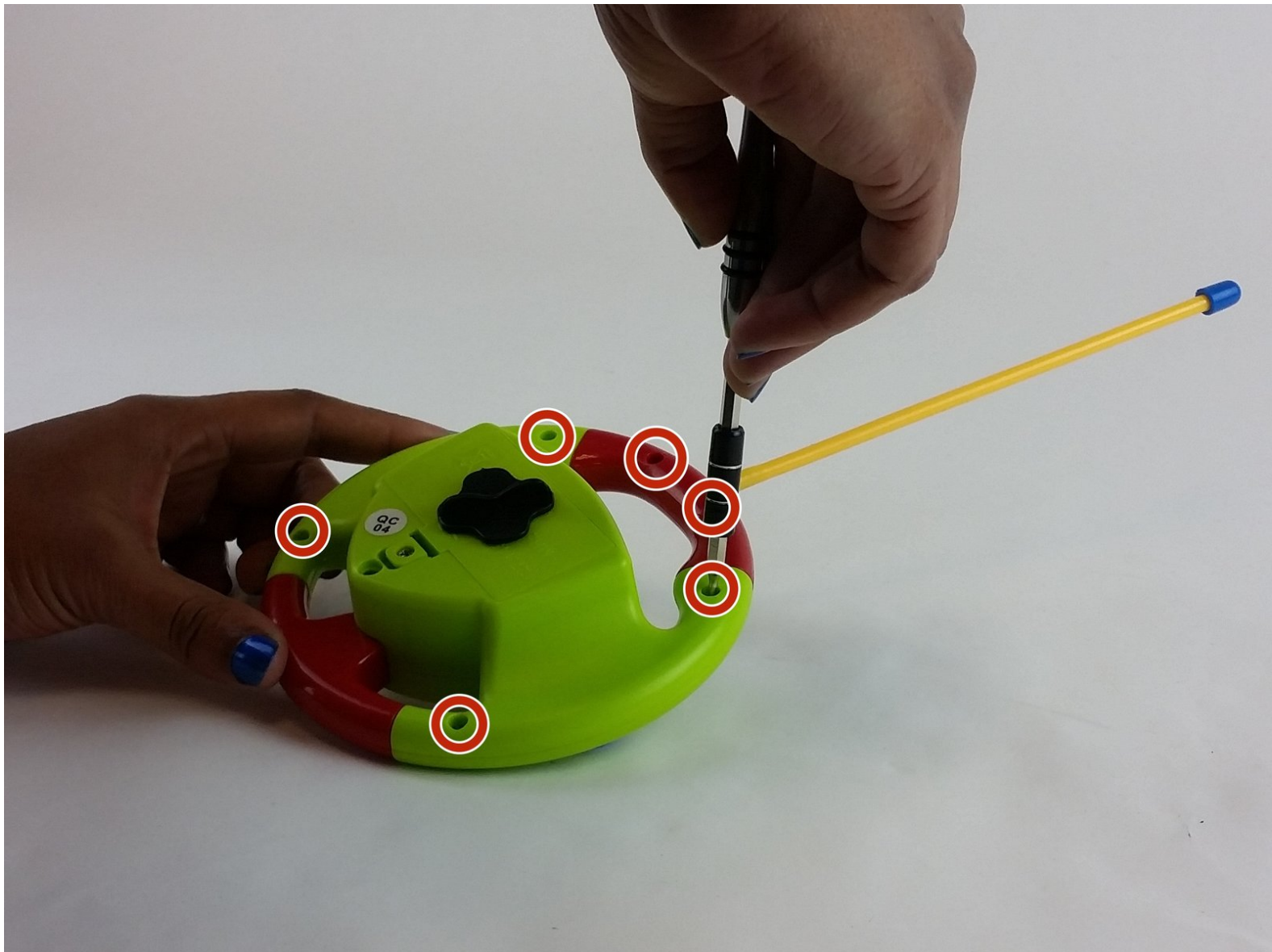




# Beiens Cartoon RC Race Car LED Light Replacement

This guide will help you replace the LED light located inside the Beiens Cartoon RC Race Car remote control.

Written By: Amber Ashley



---

## INTRODUCTION

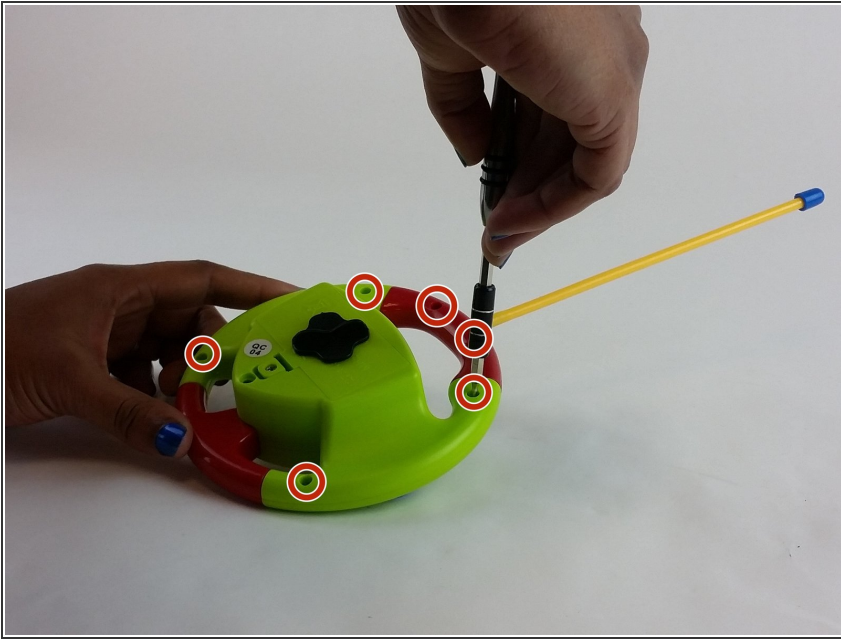
This guide requires you to use a soldering iron that can be dangerous if you do not know how to use it. I suggest looking at iFixit's [Soldering Guide](#).

---

### TOOLS:

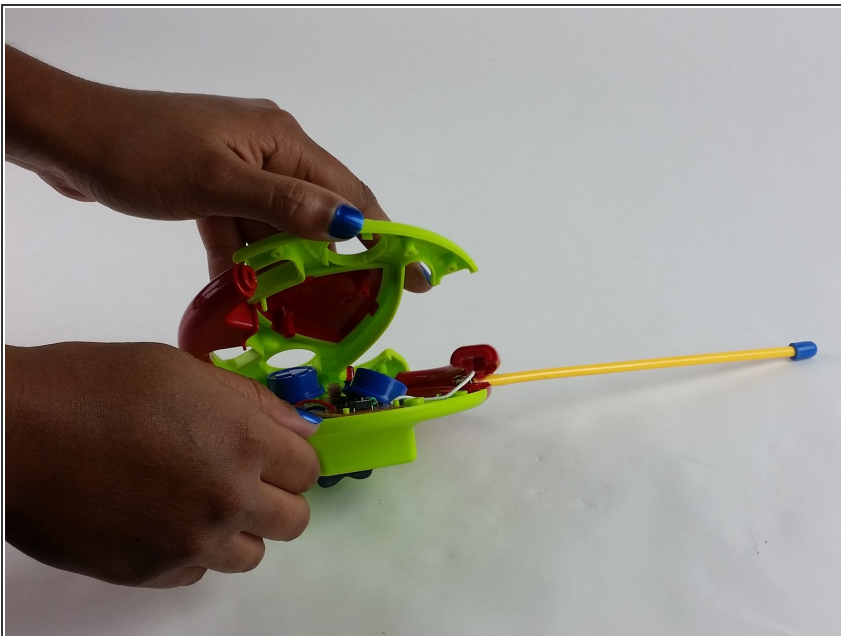
- [Phillips #00 Screwdriver](#) (1)
  - [Soldering Iron](#) (1)
-

## Step 1 — LED Light



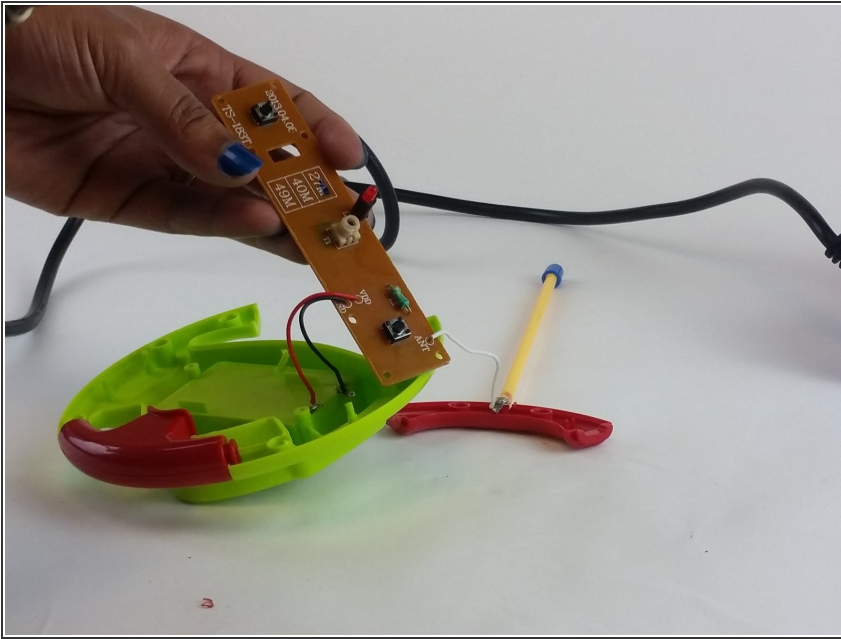
- Hold the remote control with the backside facing you and, using the Phillips #00 screwdriver, unscrew the six 6.5 mm screws on the back of the controller that hold it together.

## Step 2



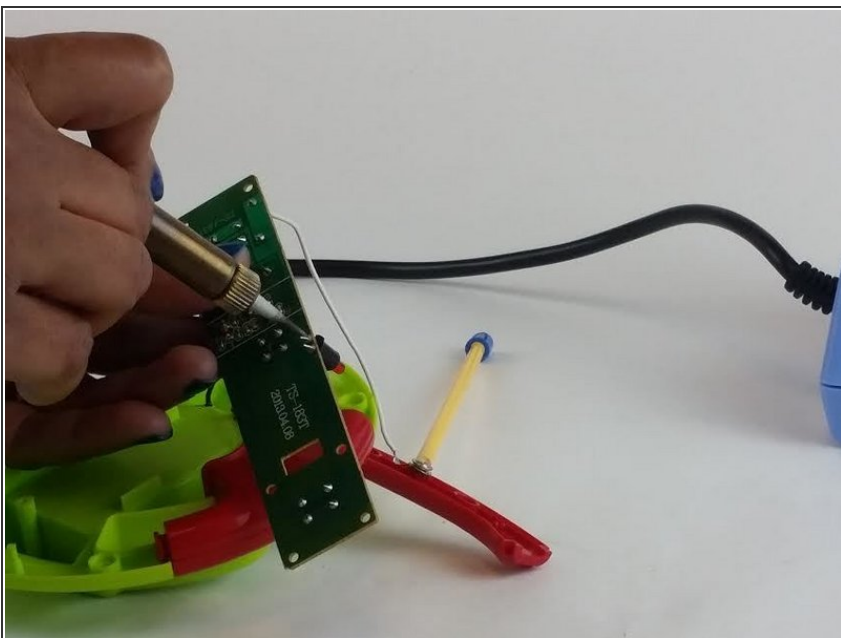
- Open the remote control.

### Step 3




- Lift the motherboard to separate it from the remote control.

### Step 4



- To remove the light, use a soldering iron to heat the solder to a liquid and loosen the leads.
- While the solder is liquid, lightly pull on the LED to remove it from the motherboard.

 The soldering iron will get very hot while it's in use. Be sure to place it on top of a heat protected surface and be careful not to touch the operational end.

To reassemble your device, follow these instructions in reverse order.