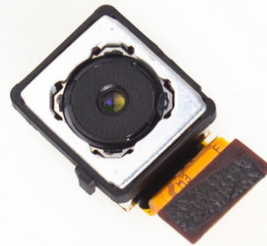




Sony Xperia Z5 Rear Camera Replacement

Sony Xperia Z5 is built with 23MP rear camera. Here comes with the Sony Xperia Z5 rear camera replacement guide.

Written By: Lenka



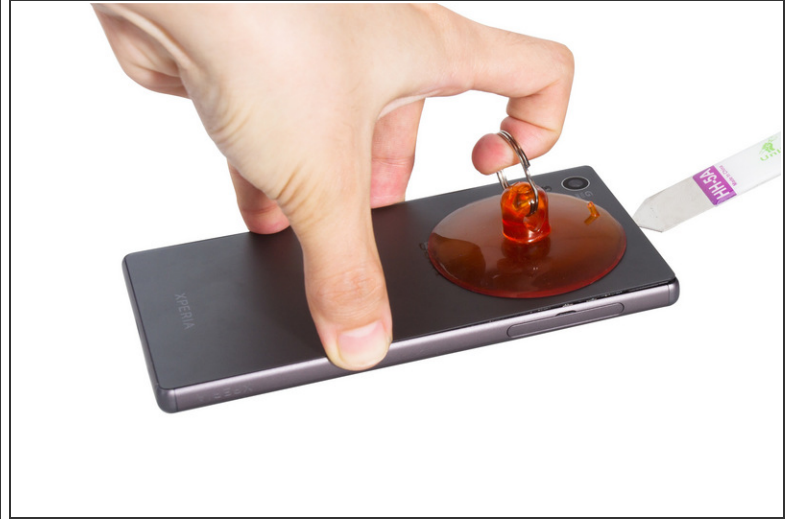
TOOLS:

- [Heat Gun \(1\)](#)
- [iFixit Opening Picks set of 6 \(1\)](#)
- [Spudger \(1\)](#)
- [Tweezers \(1\)](#)
- [Heavy-Duty Suction Cups \(Pair\) \(1\)](#)

PARTS:

- [Sony Xperia Z5 Rear Camera \(1\)](#)
- [Sony Xperia Z5 Back Cover Adhesive \(1\)](#)

Step 1 — Rear Camera



- Heat the back cover to soften the adhesive sticker.
- Place the suction cup and inert metal opening tool to open a gap from top side.

Step 2



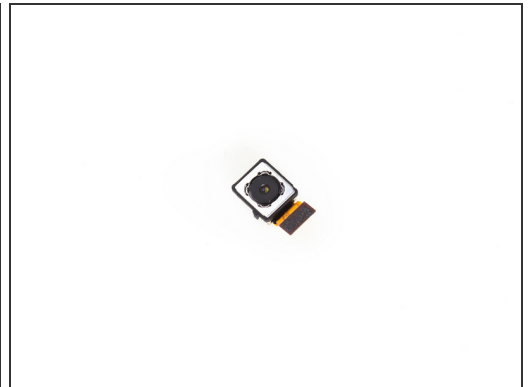
- Insert the guitar pick and slide it to cut the adhesive sticker underneath.
- Remove back cover.

Step 3



- Release battery connector in order to prevent short circuit.

Step 4



- Remove rear camera.

To reassemble your device, follow these instructions in reverse order.

This document was last generated on 2017-07-16 03:42:13 PM.