



# Windshield Bracket Mount Replacement

Prerequisite only

Written By: Olivia Breazeale



---

## INTRODUCTION

Prerequisite only guide for replacing the windshield bracket mount.

---

### TOOLS:

- [Phillips #0 Screwdriver](#) (1)
-

## Step 1 — Windshield Bracket Mount



- Remove the four 9.5 mm Phillips #0 screws from the back of the device.

## Step 2




- Pull the black plastic back case off of the device.

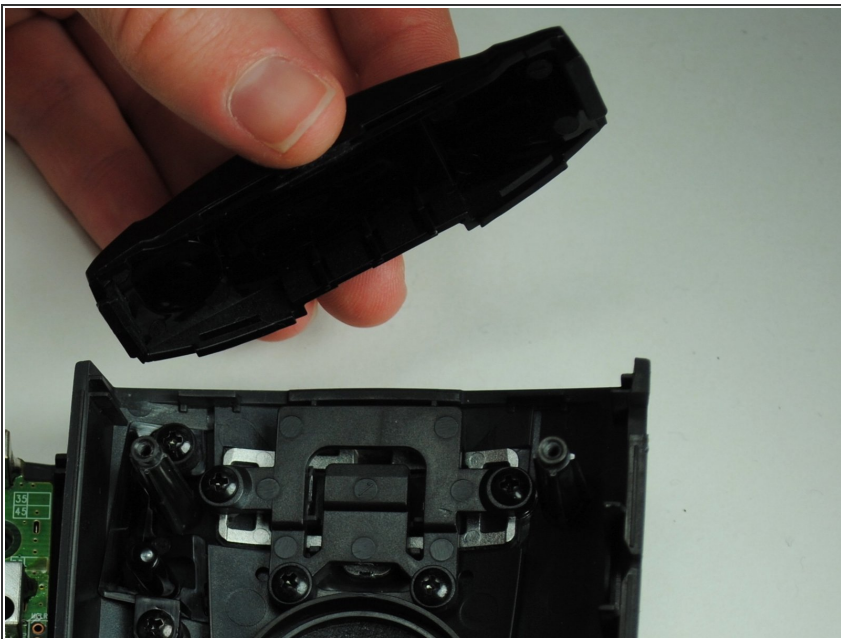
### Step 3



- Lift up the motherboard and lay it flat next to the device.

 Be careful not to sever the wires. The buttonboard is connected to the motherboard by the wires.

### Step 4



- Remove the windshield bracket mount.

To reassemble your device, follow these instructions in reverse order.