



Microsoft Surface 3 Battery Replacement

This guide will show you how to replace the battery in your Microsoft Surface 3.

Written By: Johann Cayaban



INTRODUCTION

To replace the battery, you will first need to remove the casing, undo the adhesive under the battery pack, and, finally, remove the battery to replace it.

TOOLS:

- [iOpener Kit](#) (1)
 - [Microwave](#) (1)
 - [Plastic Cards](#) (1)
-

Step 1 — Casing



- Warm up an iOpener following the instructions found in the [iOpener guide](#).
- Place the warm iOpener on top of the edges of the screen. This heat will weaken the strength of the adhesive between the display and body.

Step 2



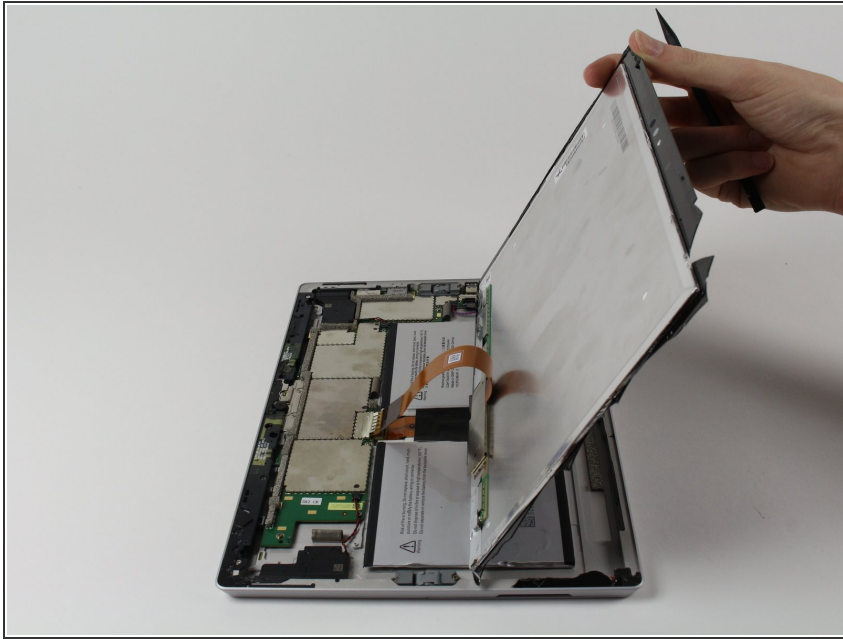
- Use iFixit opening picks to wedge under the edge of the screen at the speaker port.
 - ⓘ *This may take significant force. A fingernail might work better for the initial lift*
 - ⚠ *If you push straight down near the edge you will go through the speaker mesh and possibly end up damaging your speaker; try to push the pick in at a shallow angle.*

Step 3



- Carefully try to work your way around the device using the picks, reapplications of the heated iOpener, and luck.
- ⓘ If you break the glass on one side you might want to try again starting from the other side so that you have a clean, unbroken, edge on that side.
- ⚠ While the glass on this display is not particularly sharp when broken, it is still broken glass and you should be careful with it.

Step 4



- Flip the display over so that parts underneath it are easily accessible.
- ⚠ Do not pull out the display as it is still attached to the motherboard.
- ⓘ If you are replacing the display, or want it out of the way, continue with the [display replacement guide](#) steps.

Step 5 — Battery



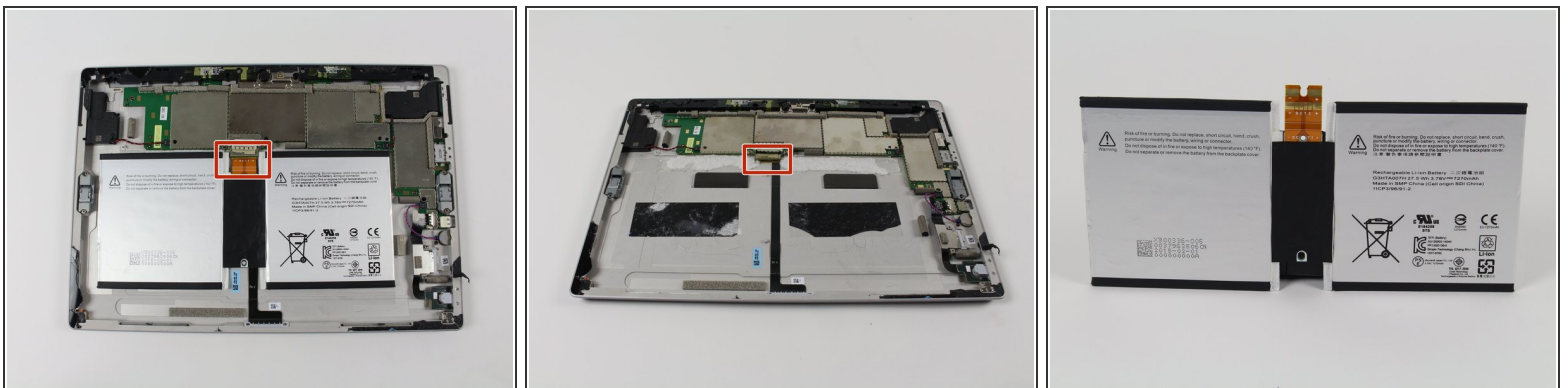
- Now that you've gotten the casing off of the Surface 3, you can start removing the battery pack.

Step 6



- Slide the iFixit plastic cards under the compartments of the battery pack.
- Slide the card around to undo the adhesive under the battery pack

Step 7



- Carefully slide the battery's flat power and data connector from its insert.
- You may now switch out the battery pack for a new one.

To reassemble your device, follow these instructions in reverse order.

This document was last generated on 2019-07-10 01:54:54 PM.