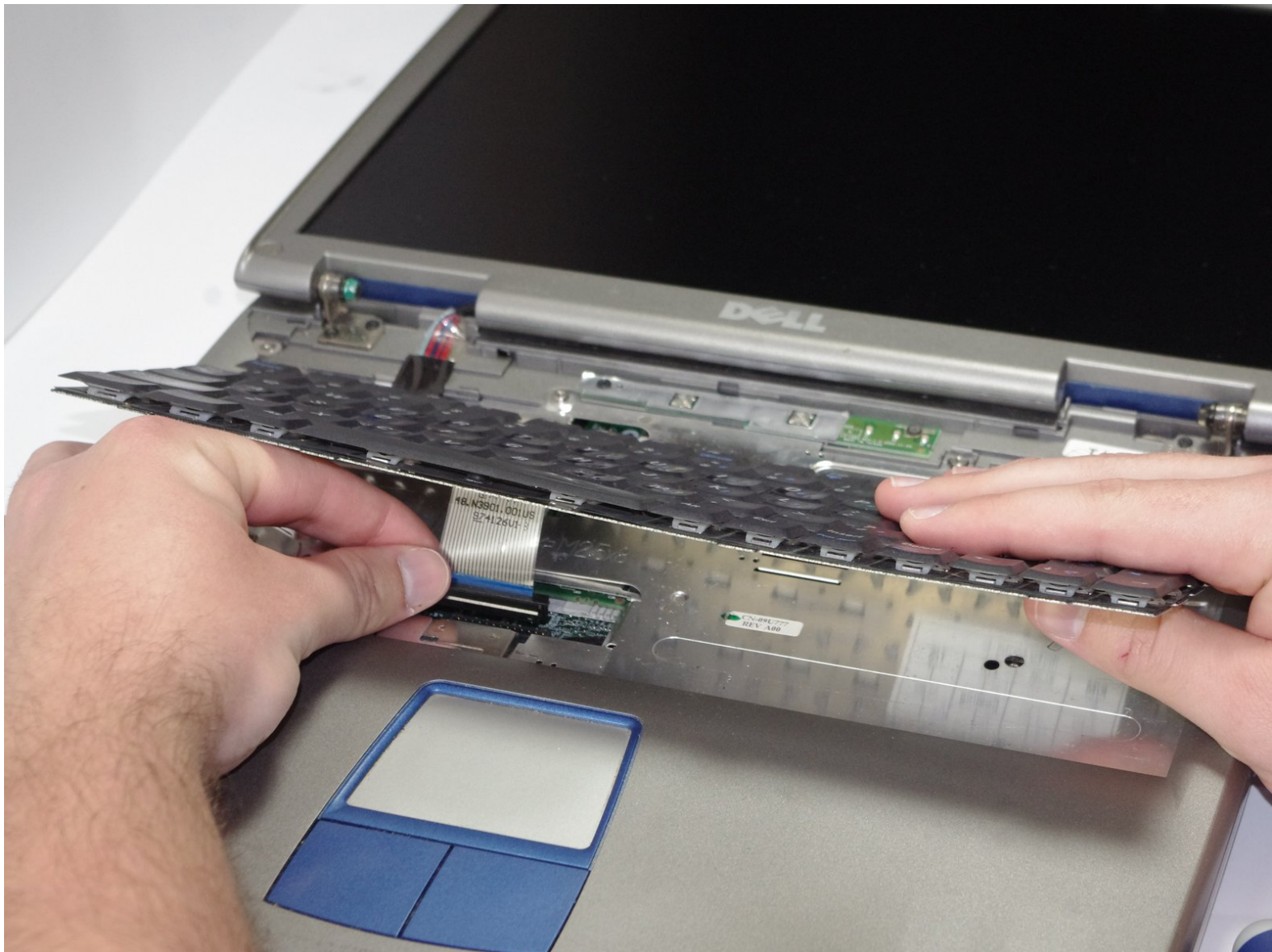




Dell Inspiron 5100 PP07L Keyboard Replacement

Either your keyboard is not functioning and you want to replace it or you want to access the internal parts of the laptop. Removal of the keyboard is one of the basis steps to doing so.

Written By: May Chauvin



INTRODUCTION

You will be removing the keyboard to either replace or access various parts of the laptop.

TOOLS:

- [Phillips #1 Screwdriver](#) (1)
 - [Spudger](#) (1)
-

Step 1 — Keyboard



- Remove battery
- Open screen so that it lies flat.

Step 2



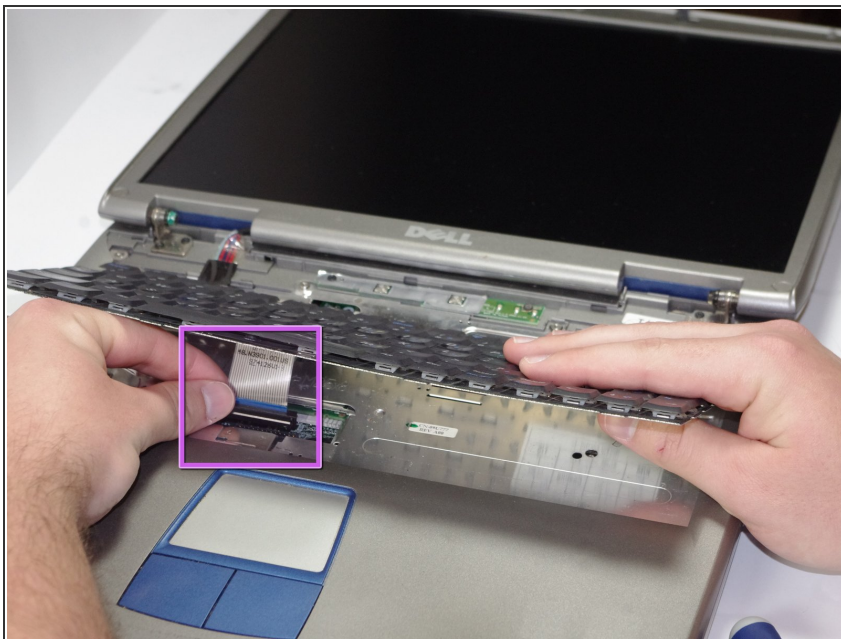
- Starting from the right side of the hinge cover, use the flat end of the spudger to pry up the hinge cover and gently remove it.

Step 3



- Remove the four M2 x 3-mm screws holding in the keyboard.

Step 4



- Lift keyboard and detach the interface connector.
- ⓘ Take extra care when removing and handling the keyboard. The key caps on the keyboard are fragile, easily dislocate and would be time-consuming to replace.

To reassemble your device, follow these instructions in reverse order.