



LG G Pad 7.0 Battery Replacement

Written By: Ethan Chow



INTRODUCTION

This guide will help you replace the battery on your LG v400 or v410. There is no glue involved with opening the case, making this repair pretty straightforward.

TOOLS:

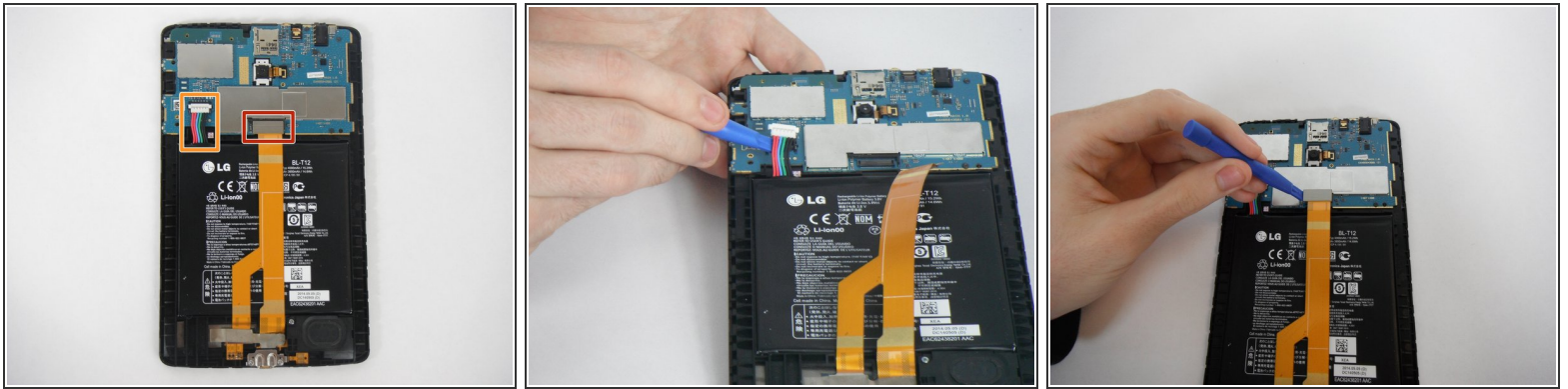
- [iFixit Opening Tools](#) (1)
-

Step 1 — Front Panel



- The screen assembly is secured to the plastic backing with clips. Insert the spudger between the screen and plastic.
- Work your way around the device, freeing it from the connecting clips.
- Be careful around the MicroSD, sim card, power, and volume buttons
- Attempt to lift the tablet from the plastic frame. You may need to loosen some more clips if it is difficult to remove.

Step 2 — Battery Connector



- Remove the battery connector marked in orange, by prying it upwards. ***You may need some force to do this, be careful not to damage anything.***
- Remove the other connector marked in red by gently prying up. ***Be sure not to rip the ribbon cables as they are very fragile.***

Step 3 — Battery



- Gently pry the battery up making sure not to bend it or snag any cables.
- ***The battery is secured by two pieces of double sided tape on the left and right edges under the battery.***

To reassemble your device, follow these instructions in reverse order.