



LG G Pad 7.0 Display Assembly Replacement

This guide will cover how to replace a cracked screen on the LG G Pad 7.0

Written By: Ethan Chow



INTRODUCTION

This guide will cover how to replace a cracked screen on the LG G Pad 7.0

TOOLS:

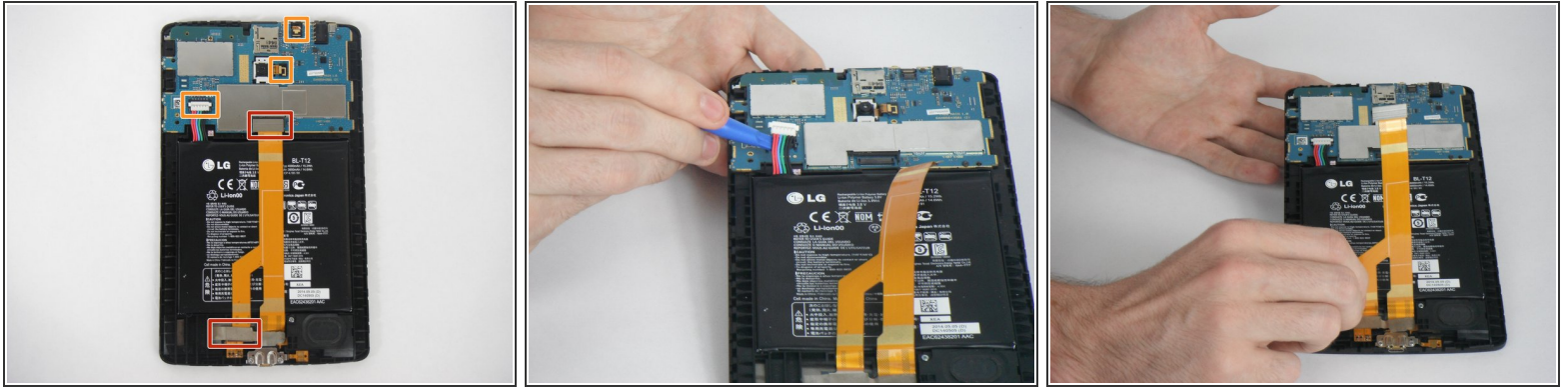
- [Essential Electronics Toolkit](#) (1)
 - [Heat Gun](#) (1)
-

Step 1 — Front Panel



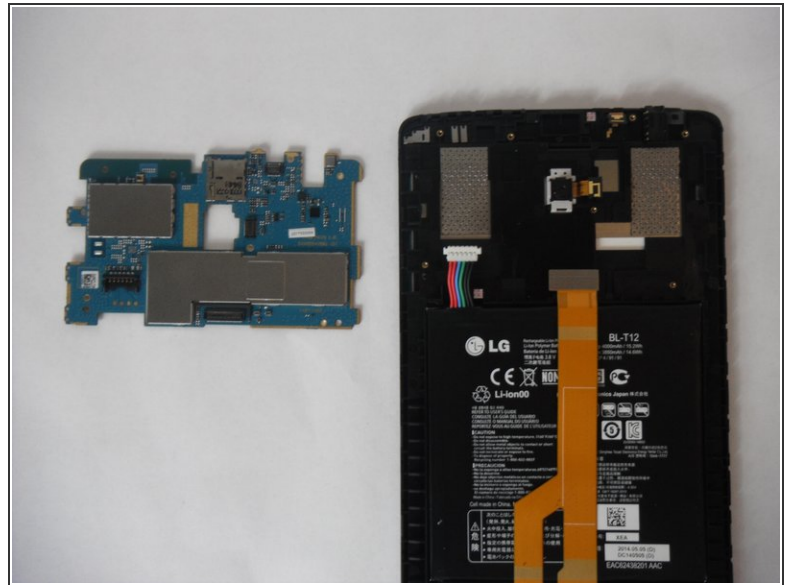
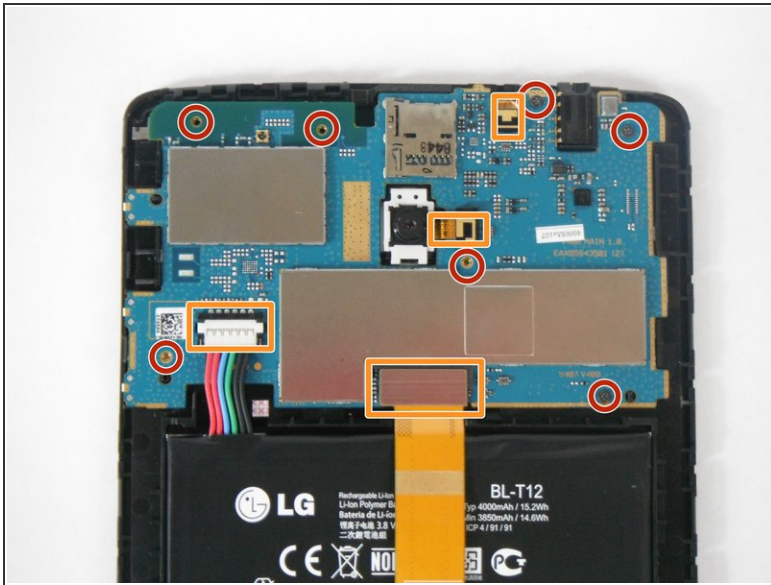
- The screen assembly is secured to the plastic backing with clips. Insert the plastic opening tool between the screen and plastic.
- Work your way around the device, freeing it from the connecting clips.
- ⚠ Be careful around the MicroSD, sim card, power, and volume buttons
- Lift the tablet from the plastic frame. You may need to loosen some more clips if it is difficult to remove.

Step 2 — Connectors



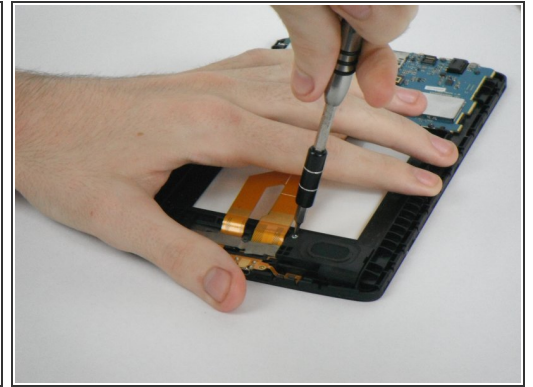
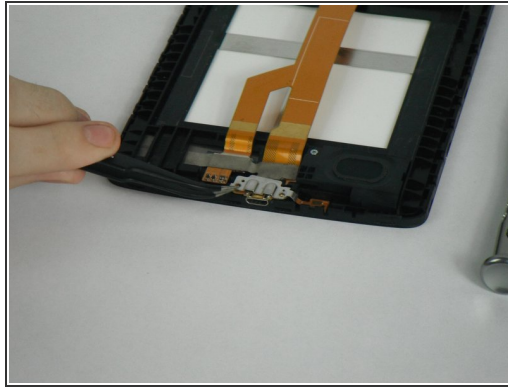
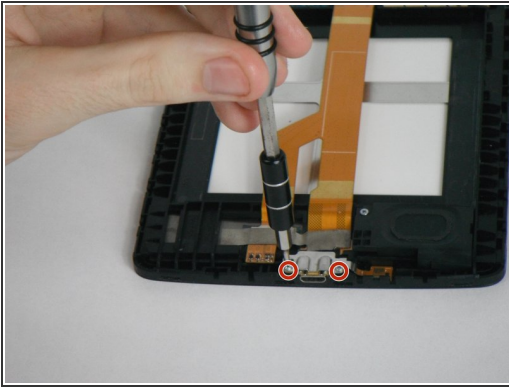
- Remove the red marked connectors by gently prying up. Be sure not to rip the ribbon cables as they are very fragile.
- You will have to remove the metallic tape near the bottom of the tablet to disconnect the display cable.
- Remove the three connectors marked in orange by gently prying them upwards. The cables are very fragile so be careful not to rip them.

Step 3 — Logic Board



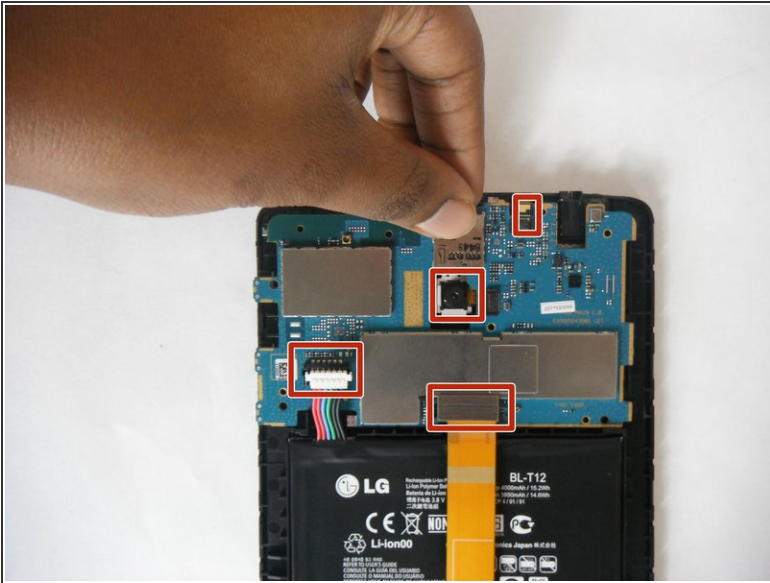
- Remove the 7 screws marked in red that are securing the logic board to the case.
 - **Be sure that all the connectors marked in orange are removed before pulling out the mother board.**
- Very carefully remove the logic board after the screws have been removed

Step 4



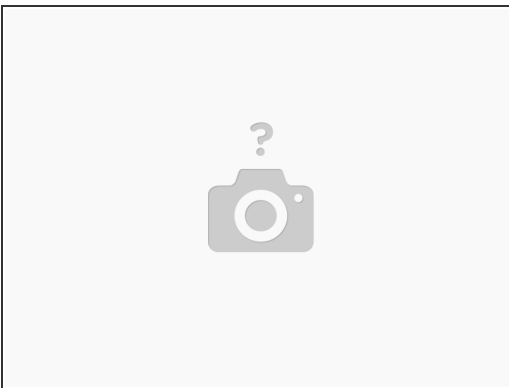
- Remove the two screws marked in red.
- Using the tweezers, pull out the metal bracket that holds the charging port in place.
- Pull out the ribbon connector in orange.
- Remove the one screw that holds the speaker in place.
- Slowly pull out the speaker.

Step 5



- Insert your new mother board with the 7 screws
- Reconnect all the connectors marked in red back to the mother board.

Step 6 — Display



- Use a heat gun to loosen the adhesive holding the display to the plastic midframe.
- Slowly remove the display from the midframe with a razor blade.

Step 7



- Use double sided tape to adhere the new display to the plastic frame

To reassemble your device, follow these instructions in reverse order.