



# TomTom VIA 1605TM Front Screen Replacement

Screen is cracked, broken or otherwise compromised and needs replacement.

Written By: Tyler Wade



---

## INTRODUCTION

GPS may be dropped and the front screen is cracked. Replacement is needed in order to properly see the screen and avoid getting cut from broken glass. When prying do not use metal tool as this can cause static damage. Be careful when removing the screen because the broken glass can cut you. The device can be identified by it's model number which is located under the small panel on the bottom of the device.

---

### TOOLS:

- [iFixit Opening Tools](#) (1)
-

## Step 1 — Front Screen



- Locate the round suction cup on the back of the device.
  - Twist the suction cup clockwise or counterclockwise while pulling back away from the device closer to your body until removed.
- When reassembling twist the suction cup but, push in as oppose to pulling out.

## Step 2




- Location of screw is where the suction cup was.
  - Insert 8mm Hex #T6 screw driver into screw.
  - Unscrew in counter clockwise direction.
- When reassembling screw in the clockwise direction.

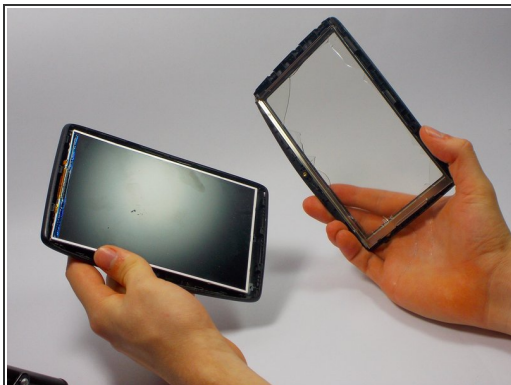
### Step 3




- Pry along the edges with the plastic opening tool to separate the back and front panel.

 Try not to tear the screen open as you may break the part. Go about this gently but with enough force to remove the screen.

### Step 4



- Place the new front panel (with new screen) on to the back panel. Press firmly along the edges to attach.

 Only do this step of placing the front panel on if you are completed. If there are still components needed replacing postpone this step until the end.

To reassemble your device, follow these instructions in reverse order. Now you're done and your device is ready to use!