



HP ProOne 600 G1 Prerequisite only

prerequisite only

Written By: Maxwell Snook



INTRODUCTION

Back Removal.

TOOLS:

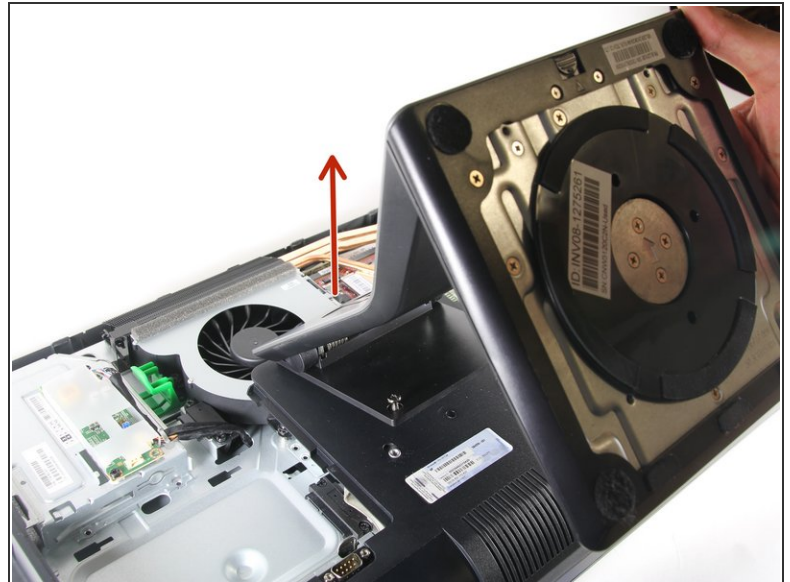
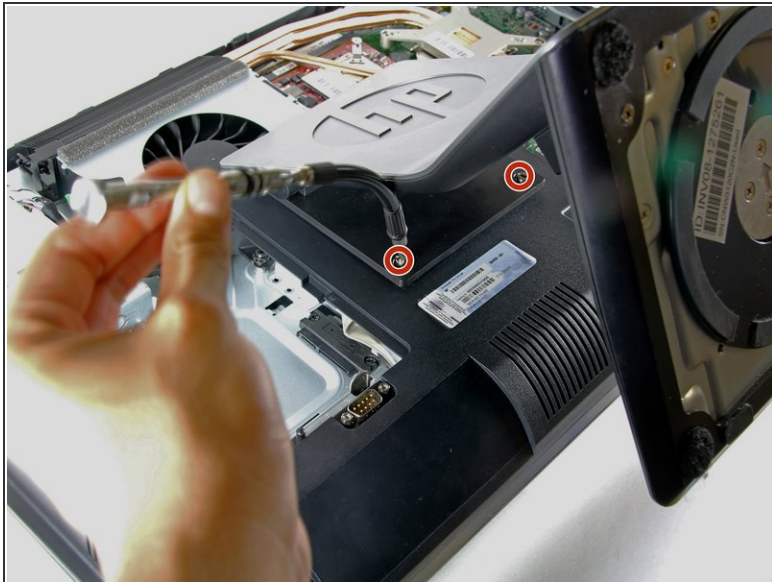
- [T15 Torx Screwdriver](#) (1)
-

Step 1 — Back Removal



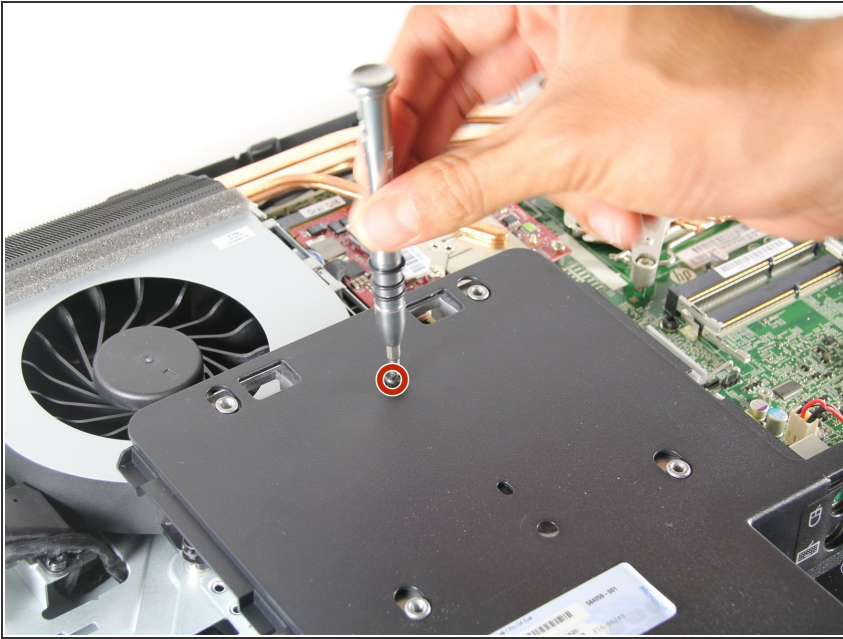
- Push the unlock tabs on the back of the monitor in and towards each other while sliding the back cover up.

Step 2



- Loosen the two 1/2" screws , with the T15 Torx Screwdriver, on each side of the stand. Remove stand.

Step 3



- Take out the single 3/8" screw, with the T15 Torx Screwdriver, from the middle of the backplate.

Step 4



- Remove the backplate by pulling it back towards you.
- ⓘ Small plastic tabs hold in the backplate, pull these up to remove it.

To reassemble your device, follow these instructions in reverse order.