



Dell Inspiron 8600 CD-Rom Drive Replacement

If the CD-Rom drive will not open or is functioning improperly, follow the steps below.

Written By: Brian Murphy



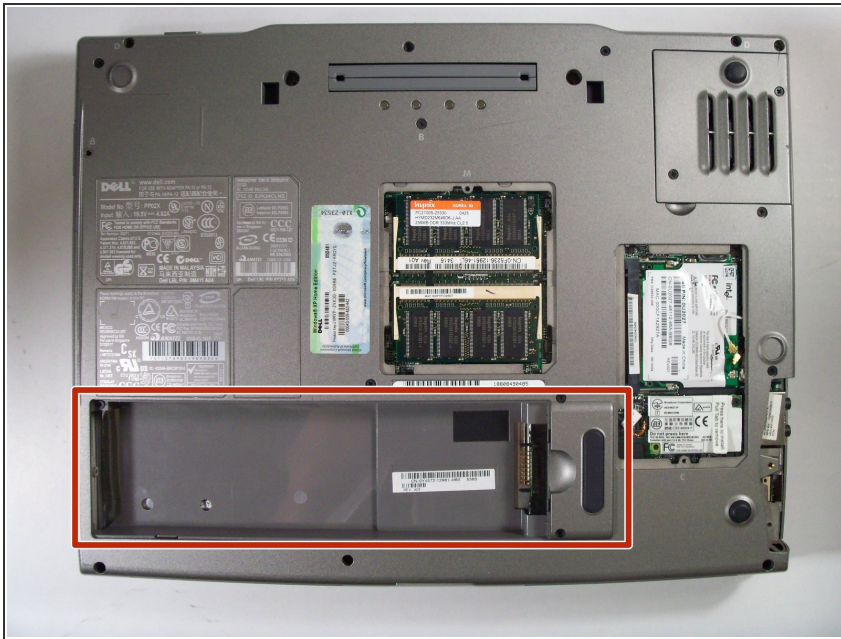
INTRODUCTION

This guide will show you how to remove the CD-Rom Drive and replace it with a properly functioning one.

TOOLS:

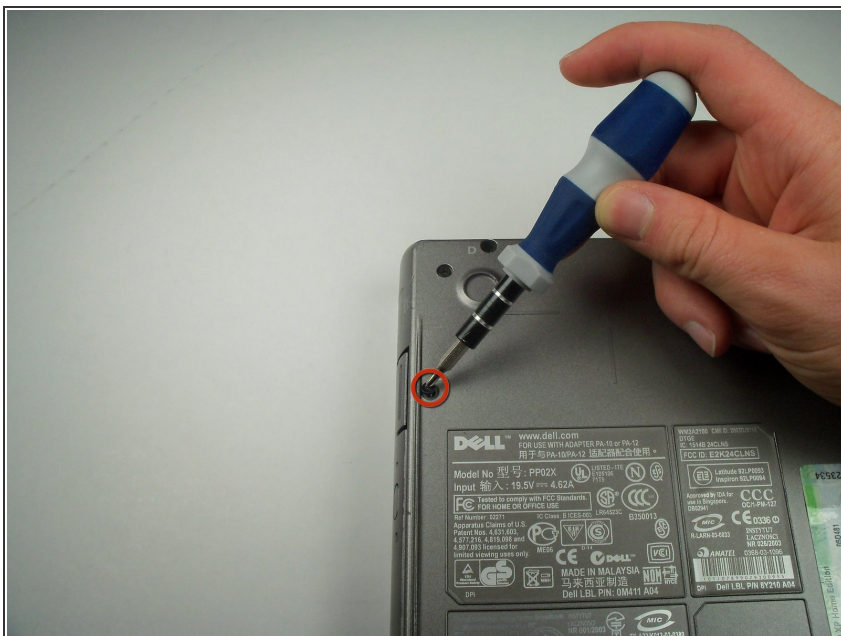
- [Phillips #1 Screwdriver](#) (1)
-

Step 1 — Battery



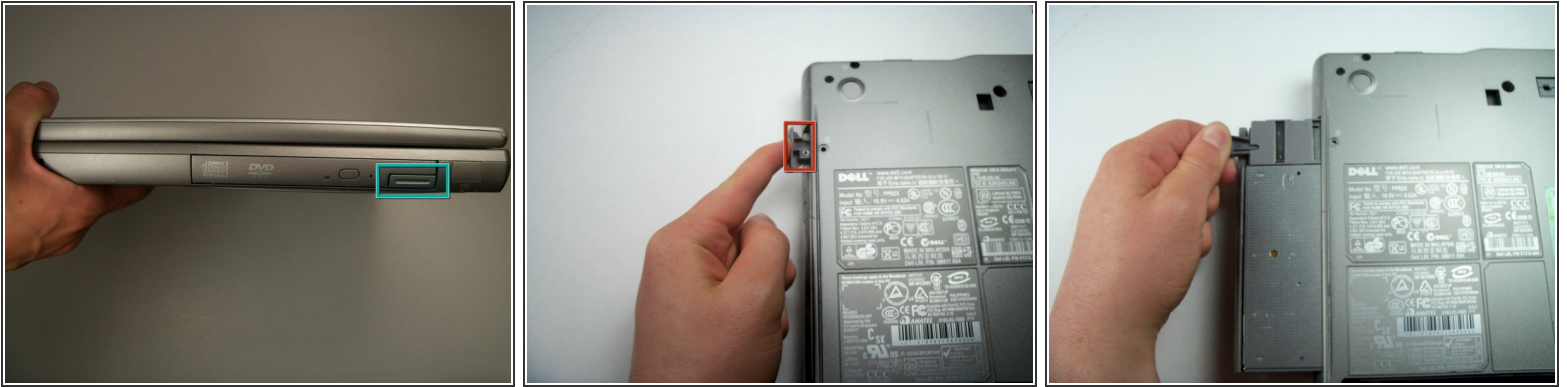
- Remove the battery from the bottom of the laptop.
- ⓘ Please click on the following link for further instruction on how to remove the battery. [Dell Inspiron 9100 Battery Replacement](#)
- ⚠ It is important to remove the battery so that you will not be electrocuted while working with the computer's hardware.

Step 2 — CD-Rom Drive



- Locate and remove the screw that secures the CD-Rom Drive.

Step 3



- Push the button on the lower right hand side of the CD-Rom drive component.
- The button should pop out.
- Then pull out the CD-Rom Drive from there.

To reassemble your device, follow these instructions in reverse order.