



Dell Inspiron 8600 Hinge Cover Replacement

This guide will show you how to remove and replace the hinge cover.

Written By: John Nesthus



INTRODUCTION

We will show you how to remove both the upper and lower cases of the laptop. You will then remove the old strip then replace the hinge cover. And finally re-attach the upper and lower cases.

TOOLS:

- [Phillips #1 Screwdriver](#) (1)
 - [Flathead 3/32" or 2.5 mm Screwdriver](#) (1)
-

Step 1 — Battery



- Remove the battery from the bottom of the laptop.
- Please click on the following link for further instruction on how to remove the battery. [Dell Inspiron 9100 Battery Replacement](#)
- ⓘ It is important to remove the battery so that you will not be electrocuted while working with the computer's hardware.

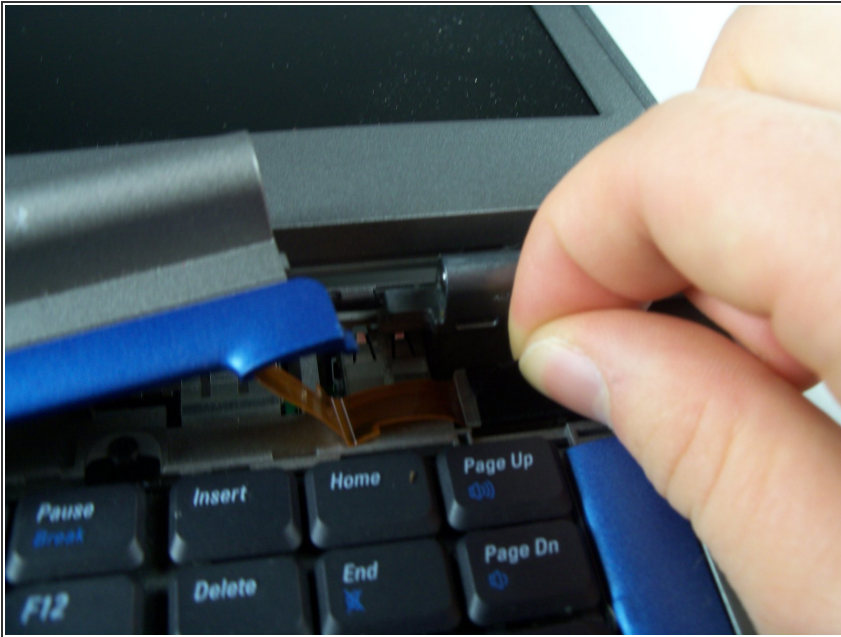
Step 2 — Hinge Cover



- Insert a spludger into the notch at the far left side of the top blue panel and pry hinge cover off.
- Note: You may need to pry the other side off by inserting the spludger between the hinge and the top cover.

⚠ Be careful of wire attached to underside of the hinge cover.

Step 3



- Pull the small black tab on the right hand side of the laptop.
- The hinge cover has now been removed.

To reassemble your device, follow these instructions in reverse order.

This document was last generated on 2019-08-22 04:55:23 AM.