



# Dell Inspiron 8600 Power Button Replacement

This guide will show you how to remove and replace the power button.

Written By: Brian Murphy



---

## INTRODUCTION

We will show you how to remove and replace the hinge cover which houses the power button.

---

### TOOLS:

- [Phillips #1 Screwdriver](#) (1)
  - [Spudger](#) (1)
-

## Step 1 — Battery



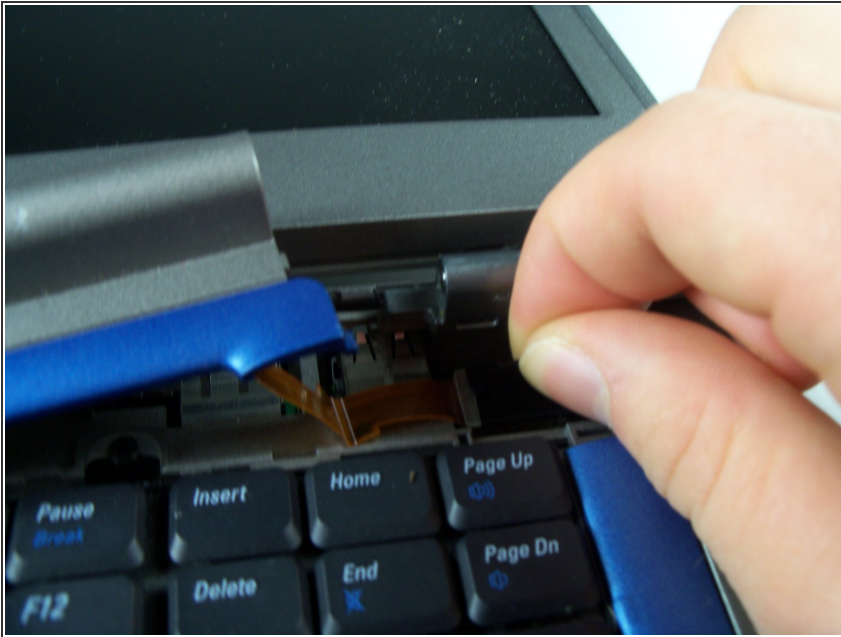
- Remove the battery from the bottom of the laptop.
- Please click on the following link for further instruction on how to remove the battery. [Dell Inspiron 9100 Battery Replacement](#)
- ⓘ It is important to remove the battery so that you will not be electrocuted while working with the computer's hardware.

## Step 2 — Power Button



- Locate the small opening at the upper left of the top blue panel which houses the power button.
- Use a spudger to lift up and remove the blue panel.
- ⚠ Caution: The hinge cover is still connected to the interior of the computer by a small black tab.

## Step 3



- Locate the black tab at the upper right corner of the keyboard, and gently pull the black tab to the left to disconnect the hinge cover.
- You should now be able to completely remove the hinge cover.

To reassemble your device, follow these instructions in reverse order.