



Dell Inspiron 600M Disk Drive Replacement

This will guide you through the steps necessary to replace the disk drive on a Dell Inspiron 600M.

Written By: Eric Johnson



INTRODUCTION

This is a quick and easy process.



TOOLS:

- [Phillips #00 Screwdriver](#) (1)



PARTS:

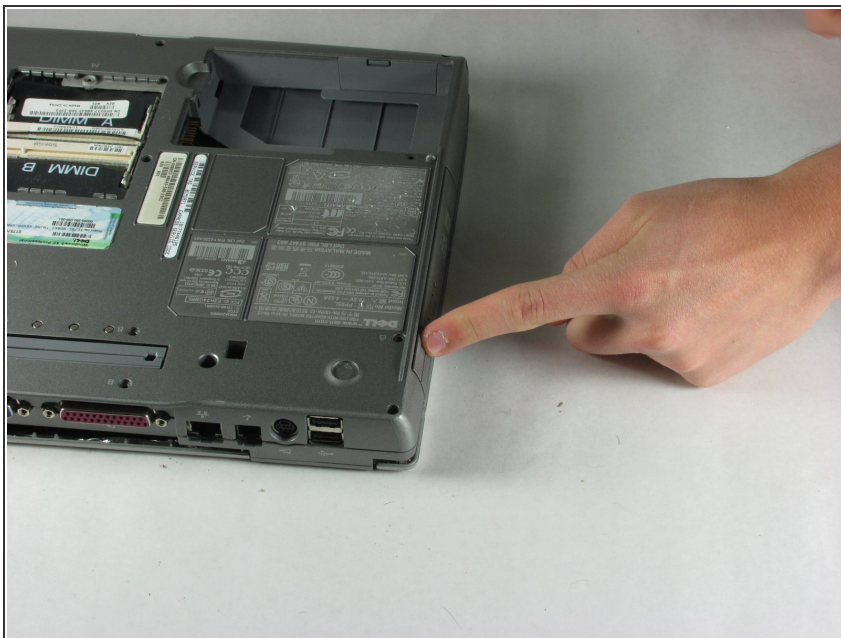
- [Compatible Replacement](#) (1)

Step 1 — Battery



- Push in the tab on the battery and lift up. The battery should detach very easily.

Step 2 — Disk Drive



- Rotate the computer so that it is upside down and you are facing the rear panel with all the connection ports.

Step 3



- Using #00 screwdriver, unscrew locking screw.
- Push in on button directly beneath screw. A tab should pop out as shown in picture 2.
- Pull out on tab to remove disk drive.

To reassemble your device, follow these instructions in reverse order.