



HP Photosmart 5520 Maintenance

Remove print head and clean the print head park slot

Written By: DrNox



INTRODUCTION

This guide will help you to remove the print head and to clean the printer : the print head park slot is usually full of ink and dust melted.

TOOLS:

- [T10 Torx Screwdriver](#) (1)
 - [Latex or nitrile gloves](#) (1)
-

Step 1 — Centering the printhead



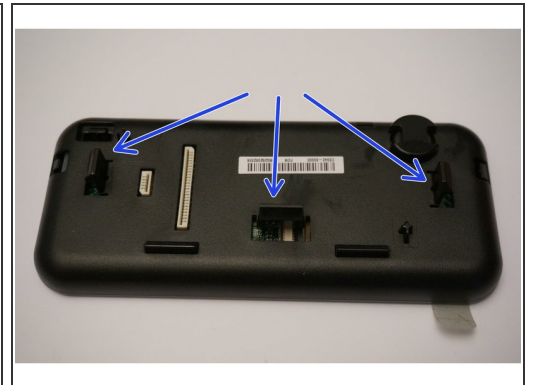
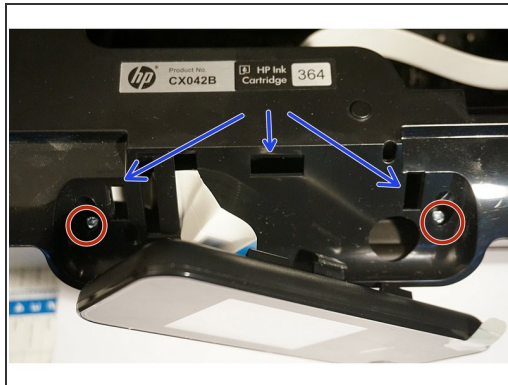
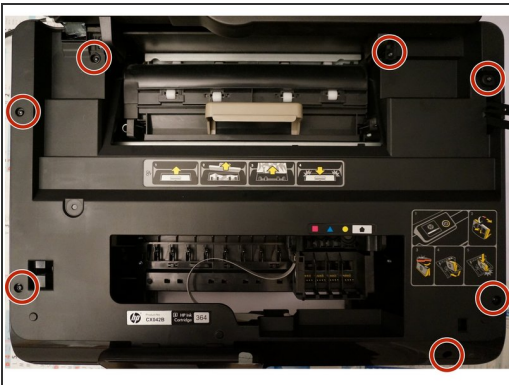
- Turn on the printer
- Lift up the scanner glass and the top cover, then the printhead is centered in the printer case
- Remove the ink cartridges.
- Unplug the printer but do not turn off with the front I/O button. Otherwise the printhead will return to its park slot.
- Use adhesive tape to fix together the scanner glass and the cover

Step 2 — Removing the top cover



- Gently pull on the hook. Retain the scanner glass and the cover once the hook is removed.

Step 3 — Removing the printer hood



- Unscrew the 7 torx screws. Do not forget the one under the printer label (You have to remove the printer label. Lower right corner).
- Push the clips at the rear of the LCD panel and pull the LCD panel outwards at the same time
- Then, pull the ribbon connected to the LCD panel to disconnect the LCD panel from the printer.
- Remove the 2 remaining torx screws hidden by the LCD panel
- See where are clips (Blue arrows)

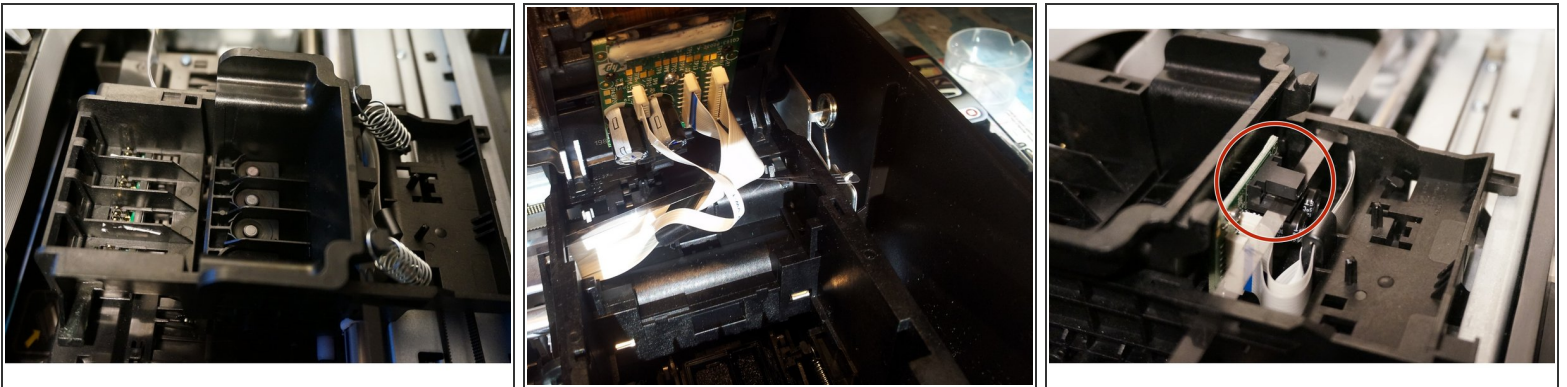
This document was generated on 2019-10-31 02:38:47 AM (MST).

Step 4



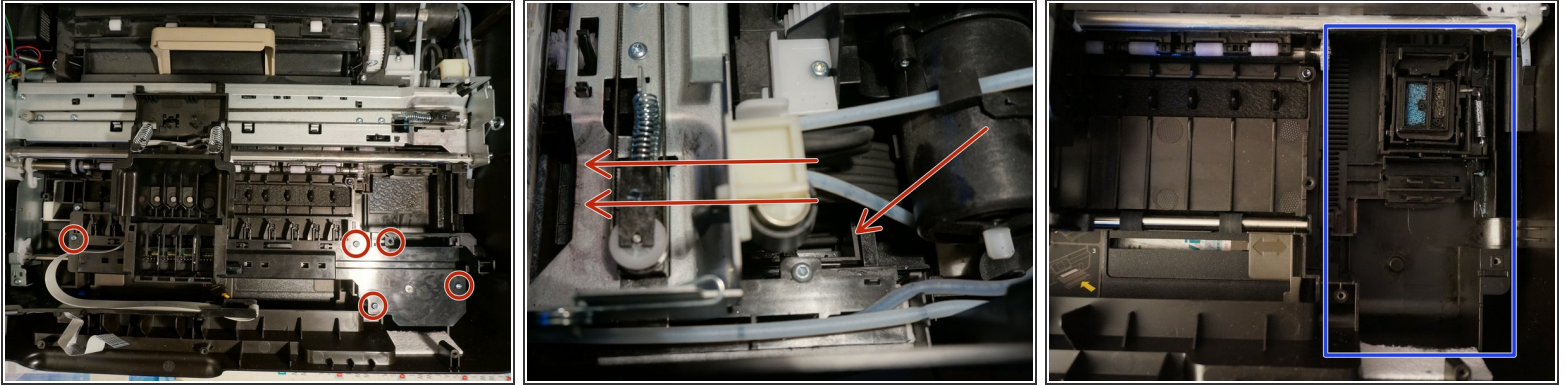
- Now the cover can be removed and expose the inner workings of the printer.

Step 5 — Removing the print head



- Remove the springs that maintain the print head.
- Remove the print head by pulling on the ribbons.
- ⓘ In case you want to replace the print head, the spare part reference is: CN688A
- When inserting the print head after cleaning or replacing, make sure the horizontal plastic ribbon is between the plastic guides, as shown in the last picture.

Step 6 — Cleaning the print head park slot



- The printer has an automatic feature to clean the print head. Usually, there is a lot of ink (Probably melt with dust) in the area where the print head is cleaned
- Remove the 5 torx screw as shown in the picture
- Assuming the print head is now removed (Not shown on the picture), now gently tip the plastic plate and remove it
- If you didn't put gloves yet, it is time to do it !
- Now, push the carriage that holds the print head cleaning system (Red arrows)
- The carriage that holds the print head cleaning system is now clean (Last picture)

To reassemble your device, follow these instructions in reverse order.