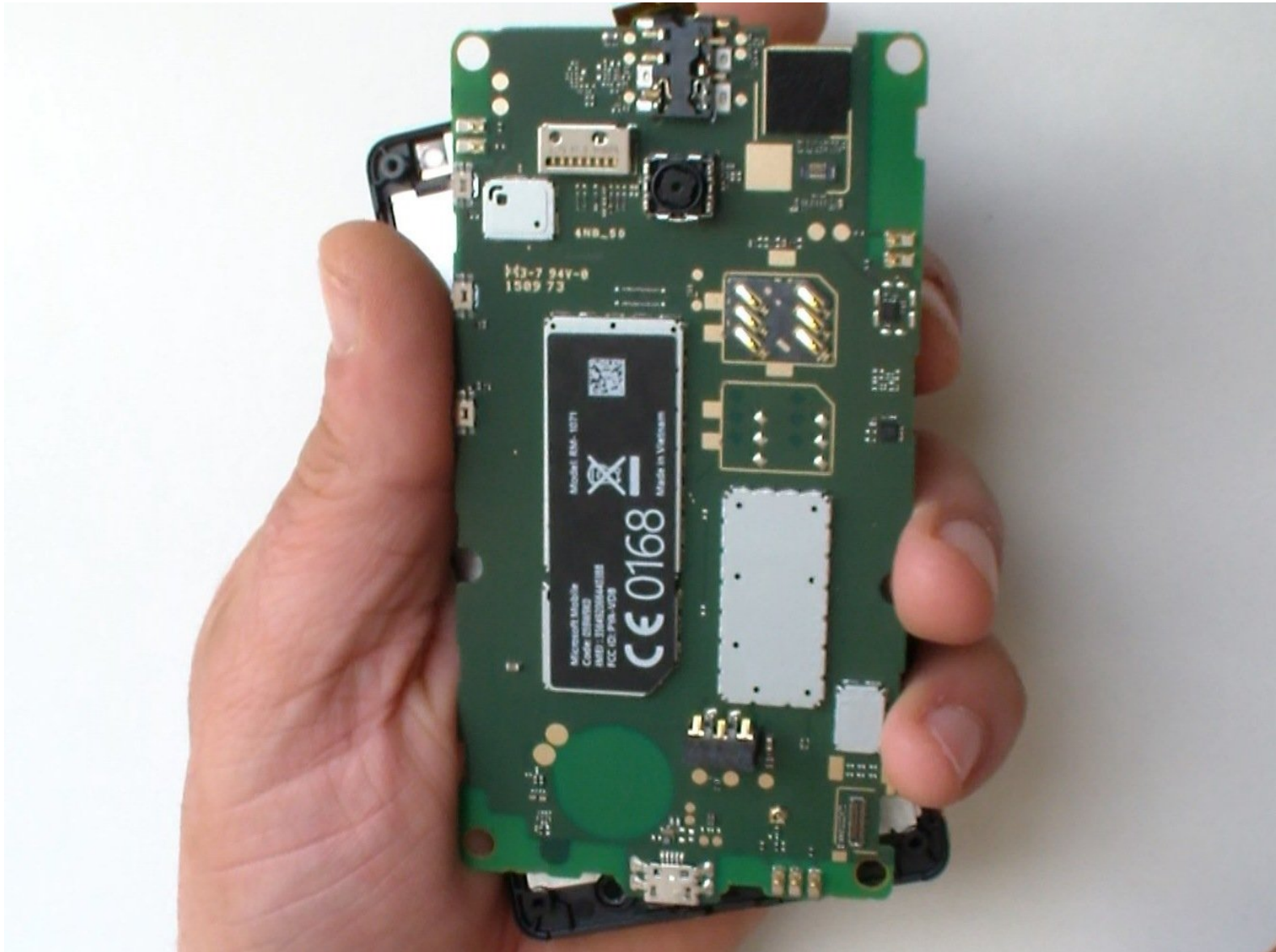




# Microsoft Lumia 435 Logic board Replacement

Microsoft Lumia 435 Logic board Replacement

Written By: ZFix



---

## INTRODUCTION

How to disassemble Microsoft Lumia 435 and remove / replace the logic board.

[video: <https://www.youtube.com/watch?v=clB1BsoegqQ>]

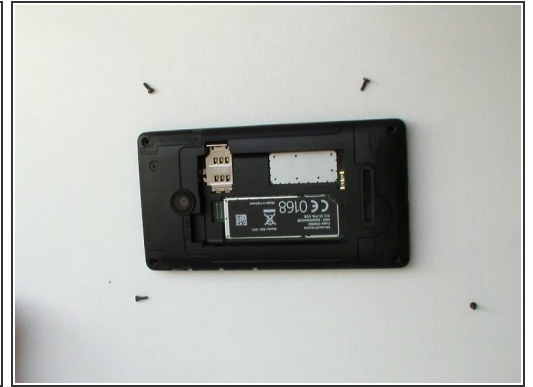
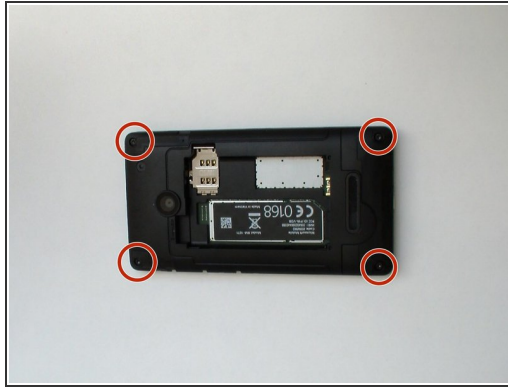
---



### TOOLS:

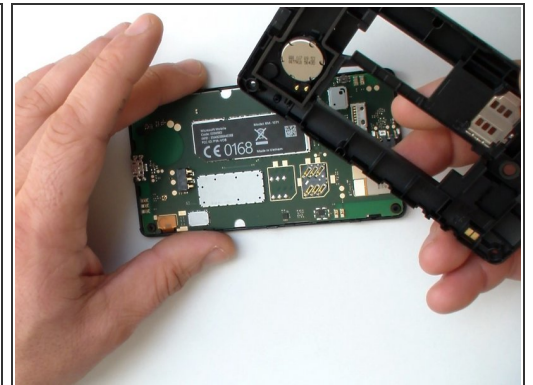
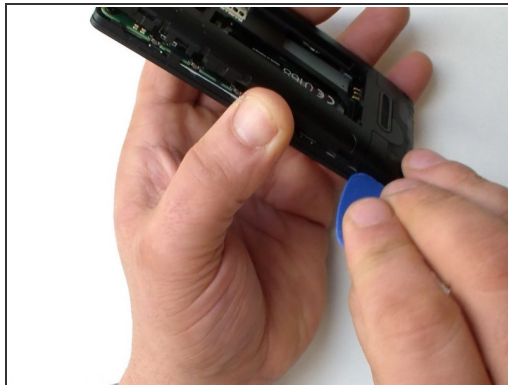
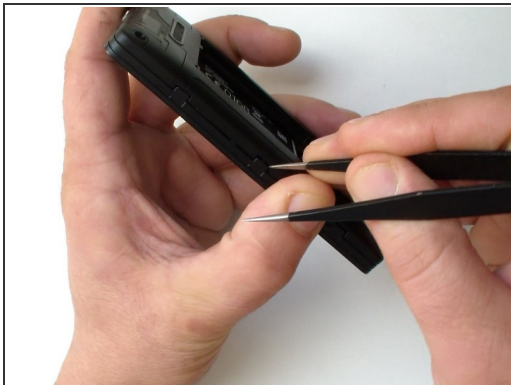
- [iFixit Opening Picks set of 6](#) (1)
  - [T6 Torx Screwdriver](#) (1)
  - [Tweezers](#) (1)
-

## Step 1 — Back Cover



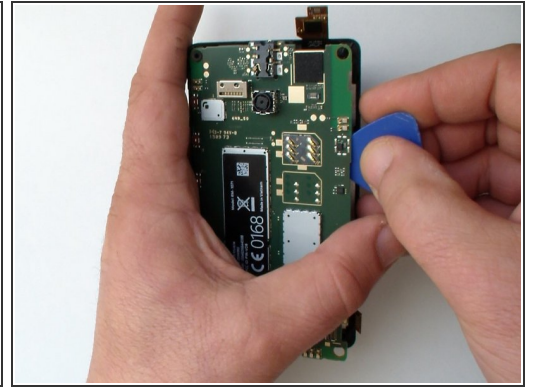
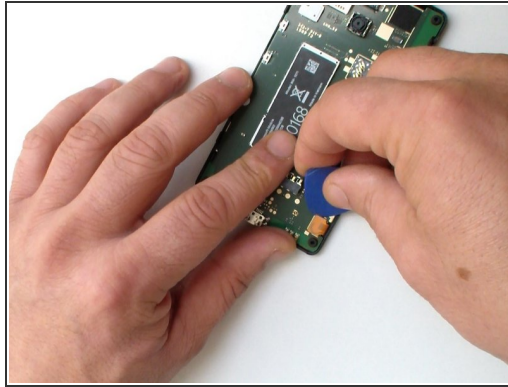
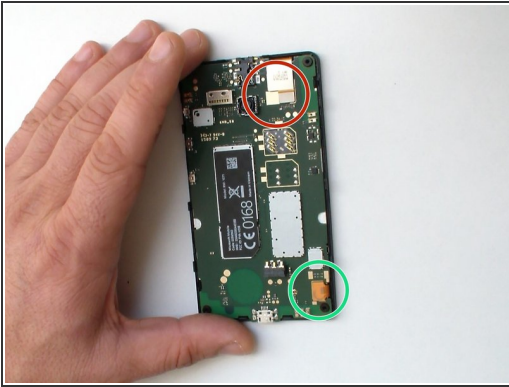
- Switch off the phone.
- Remove the battery and any inserted SIM and memory cards.
- Use a screwdriver Torx T6 and remove the 4x black screws.

## Step 2



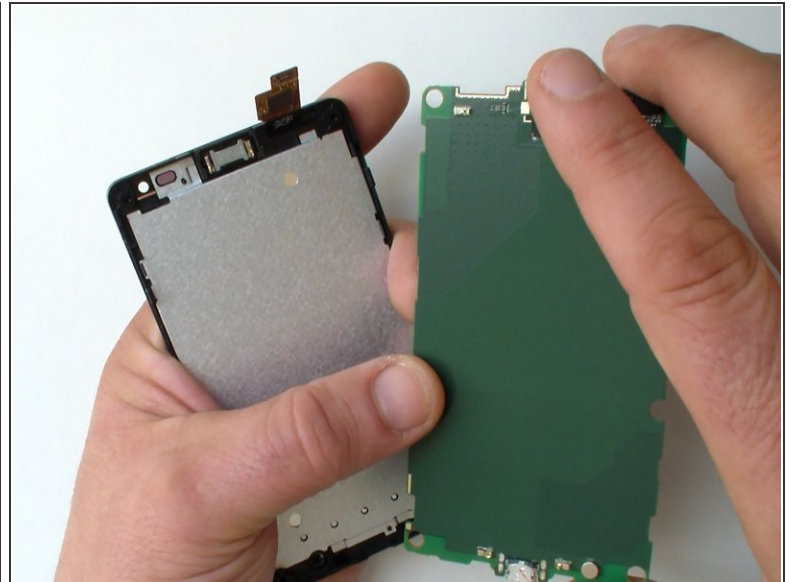
- There are several plastic locking clips hold the back cover to the frame.
- Use a tool with a sharp edge to unlock them and a plastic tool to separate the back cover.

### Step 3 — Logic board



- Unhook:
  - the touch screen flex cable
  - the LCD Display flex cable
- Use a plastic tool lift up and remove the Logic board.

### Step 4



- This is the logic board / main board - a front and rear view.

To reassemble your device, follow these instructions in reverse order.

This document was generated on 2020-11-22 09:09:53 PM (MST).

