



# Samsung SPH-M360 Casing Replacement

This guide will show the user how to remove the casing from the back of the Samsung SPH-M360.

Written By: Hunter Parker



---

## INTRODUCTION

This guide will require a screwdriver with a Phillips #0 head (labeled PH0 in iFixit 54 bit driver kit) and a plastic opening tool. Be careful not to lose the small screws involved with removing this part of the device.

---

### TOOLS:

- [iFixit Opening Tools](#) (1)
  - [Phillips #0 Screwdriver](#) (1)
-

## Step 1 — Battery



- Locate the arrow on the panel of the rear side of the phone.
- Use one or two fingers to apply light pressure downwards on the rear panel and push or pull in the direction of the arrow.

## Step 2



- Place finger inside the small semi-spherical slot near the top of the battery.
- Lightly pull the battery away from the phone. This should not require much effort.

## Step 3 — Casing



- Remove the four screws on the corners of the casing.

⚠ The volume and camera buttons may fall out

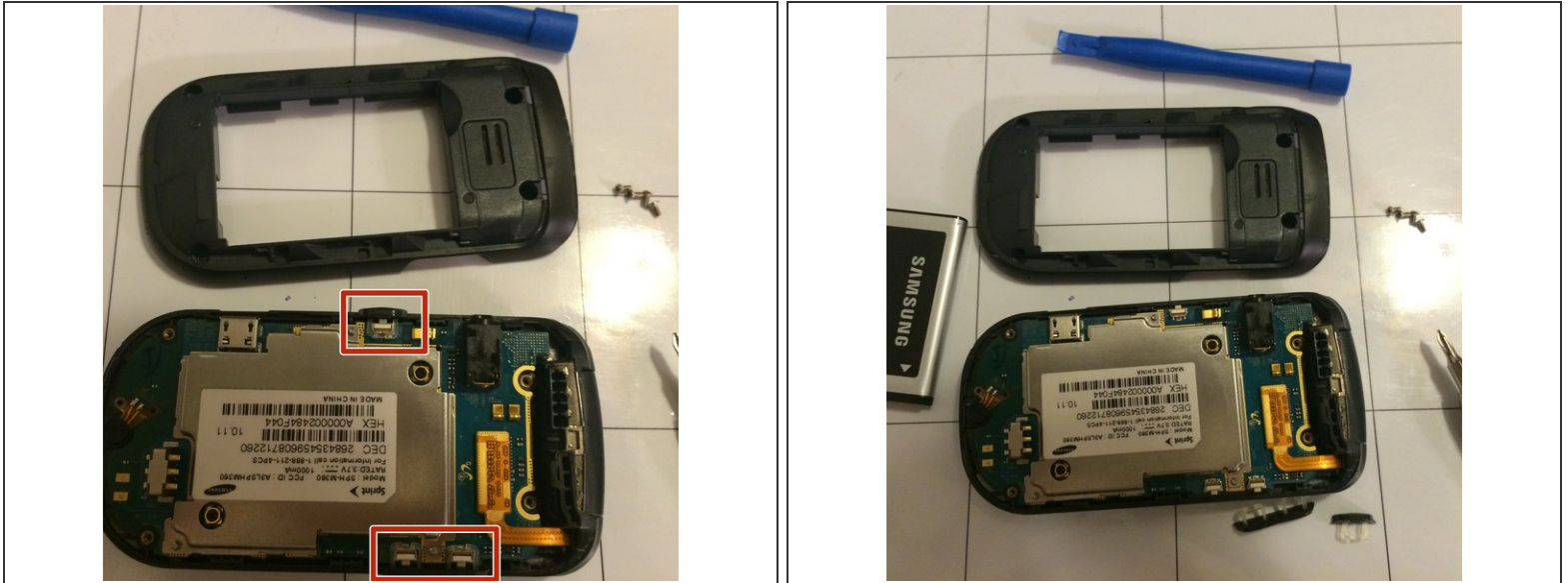
## Step 4



- Starting near the top of the casing, use the plastic opening tool to gently pry the casing open.
  - ⓘ The case should require some effort to pry open, but do not use excessive force for risk of breaking the rear panel.
- Slowly work the plastic opening tool around the edge of the casing, gently prying it around at all sides.



## Step 5



- Once the casing has been fully pried off of the phone, it should be easily removed by hand.
  - ⚠ The buttons for the camera and volume may fall out while removing the casing. Be careful not to lose the small pieces.

To reassemble your device, follow these instructions in reverse order. Be sure to secure the casing around the entire perimeter of the phone.