



iPad 2 Wi-Fi EMC 2415 LCD Replacement

Moving LCD out of the way to remove random internal components. Internal Prerequisite.

Written By: Andrew Bookholt



INTRODUCTION

Moving LCD out of the way to remove random internal components. Internal Prerequisite.

TOOLS:

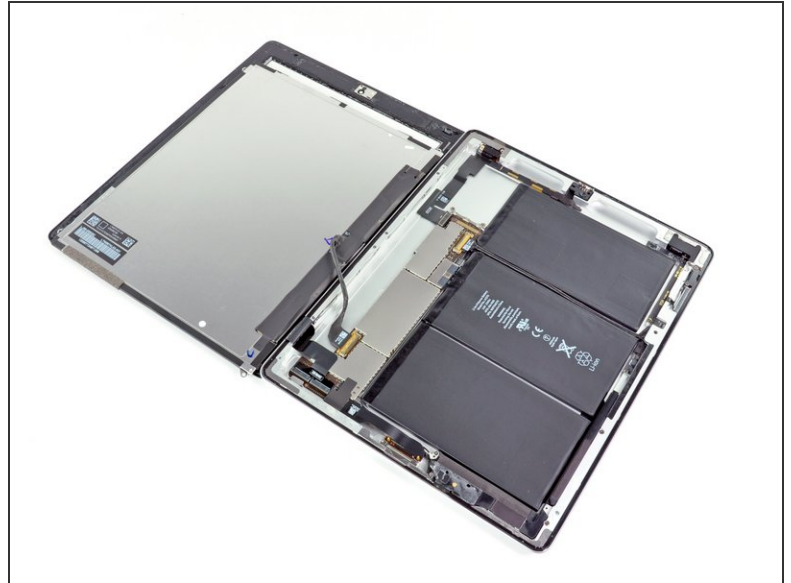
- [Phillips #00 Screwdriver](#) (1)
-

Step 1 — LCD



- Remove the four 2.0 mm Phillips screws securing the LCD to the rear case.

Step 2



i The front panel ribbon cables are connected beneath the LCD. To access them, you'll need to temporarily flip the LCD over and out of the way.

⚠ Be very careful when moving the LCD, and do not attempt to remove it from the iPad—its display data cable will remain connected while it is rotated over.

- Lift the LCD from its long edge closest to the volume buttons and gently flip it out of the rear case—like turning the page in a book.
- Set the LCD face down on the front panel.

To reassemble your device, follow these instructions in reverse order.

This document was last generated on 2019-06-15 08:13:55 PM.