



Removing the Apple Cinema Display M8149 Display Hinge

Often, the back hinge will break and cause the Apple Cinema Display to not stay upright.

Written By: Thomas Harper



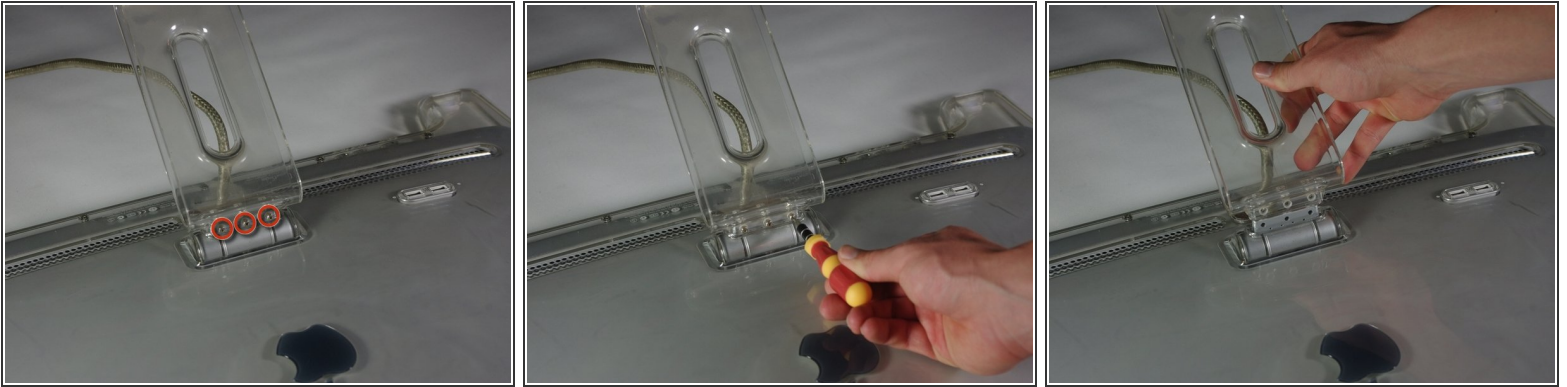
INTRODUCTION

This guide will explain how to remove the display hinge. The tools required for this section are the spudger and the PH 2 screwdriver.

TOOLS:

- [Phillips #2 Screwdriver](#) (1)
-

Step 1 — Display Hinge



 Before starting, make sure the display is **UNPLUGGED**. Failure to do so can result in shock and serious injury.

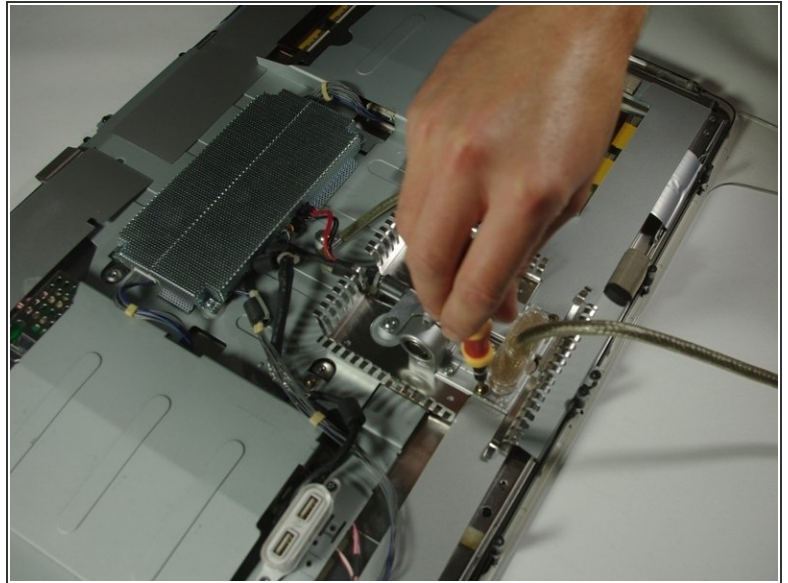
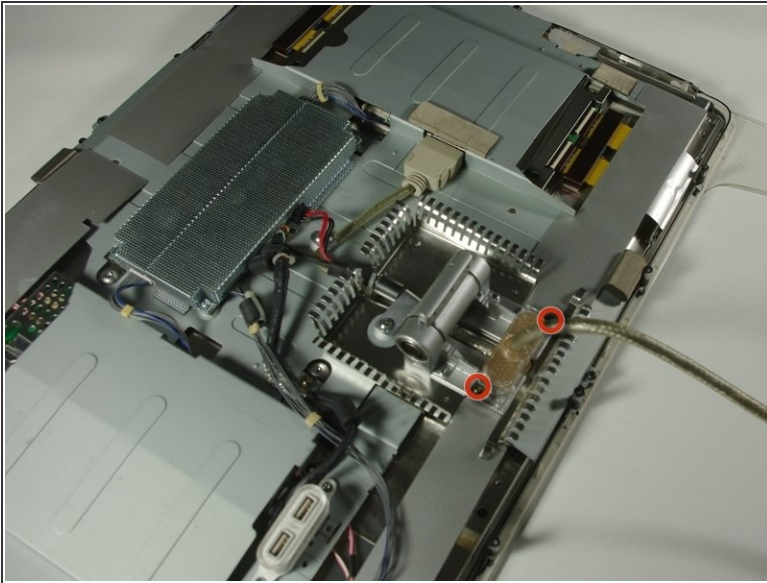
- Flip the Cinema Display so it is on its face and the feet are pointed away from you.
- Using the PH 2 screwdriver, unscrew the three feet screws (9.52 x 4.43 mm).
- Remove the back foot from the hinge mount by gently pulling it upwards.

Step 2



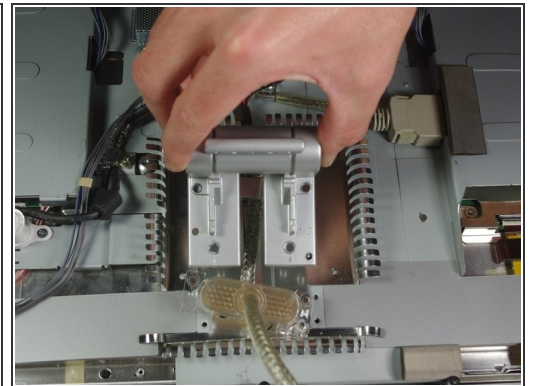
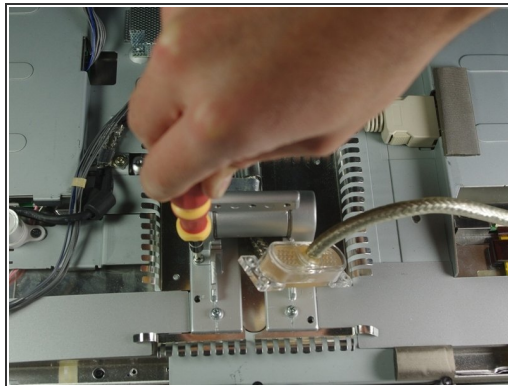
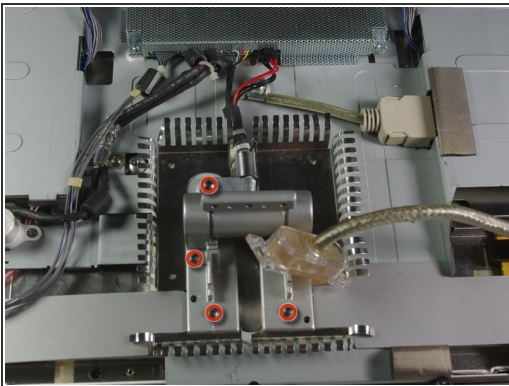
- Remove the back plate screws (5.25 x 4.43 mm) using the PH 2 screw driver.
- Lift the back plate off of the display.
- Completely remove the back plate and set it aside.

Step 3



- Remove the Apple Display Connector plate screws (9.52 x 3.43 mm) with the PH 2 screwdriver.
- Once the two screws have been removed, move the cord out of the way.

Step 4



- Remove the hinge plate screws (5.52 x 3.43 mm) with the PH 2 screw driver.
- Then lift out the hinge mount.

To reassemble your device, follow these instructions in reverse order.