



Apple Cinema Display M8149 USB Port Replacement

This summary will serve as reference for the replacement of the USB Ports on an Apple Cinema Display M8149.

Written By: Kyle Suguitan



INTRODUCTION

If the USB ports on the back of your display do not register connected devices or if they have no power, you may need to replace the USB port itself. This is a relatively easy fix. The tools required for this section are the spudger and the PH 2 screwdriver.



TOOLS:

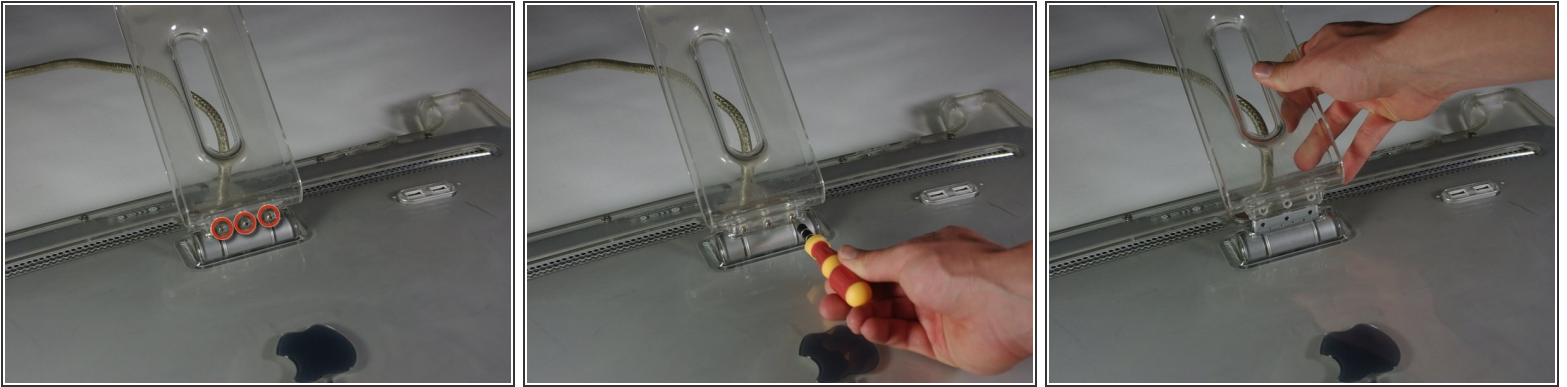
- [Phillips #2 Screwdriver](#) (1)



PARTS:

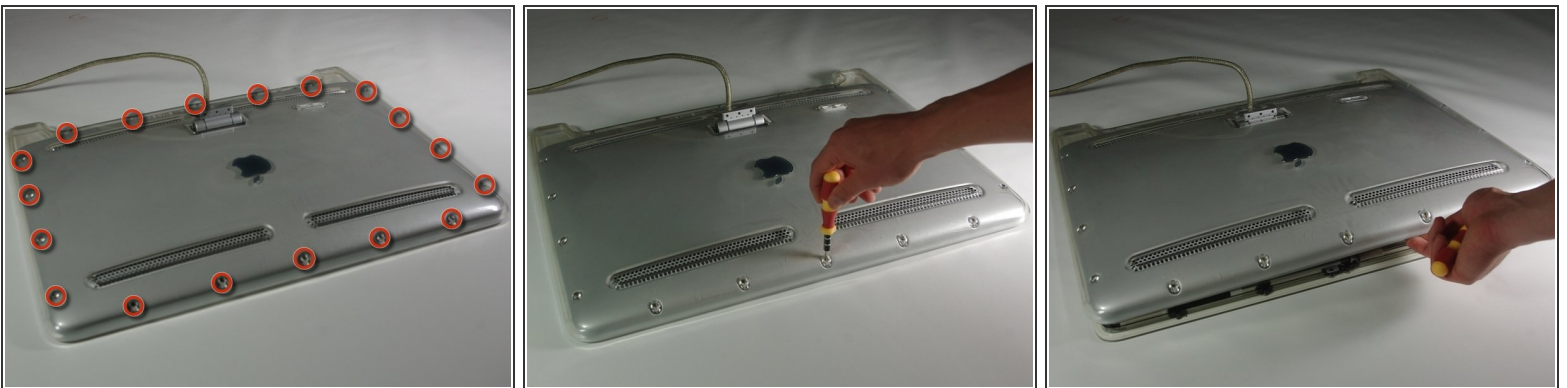
- [New USB Port for Apple Cinema Display M8149](#) (1)

Step 1 — USB Port



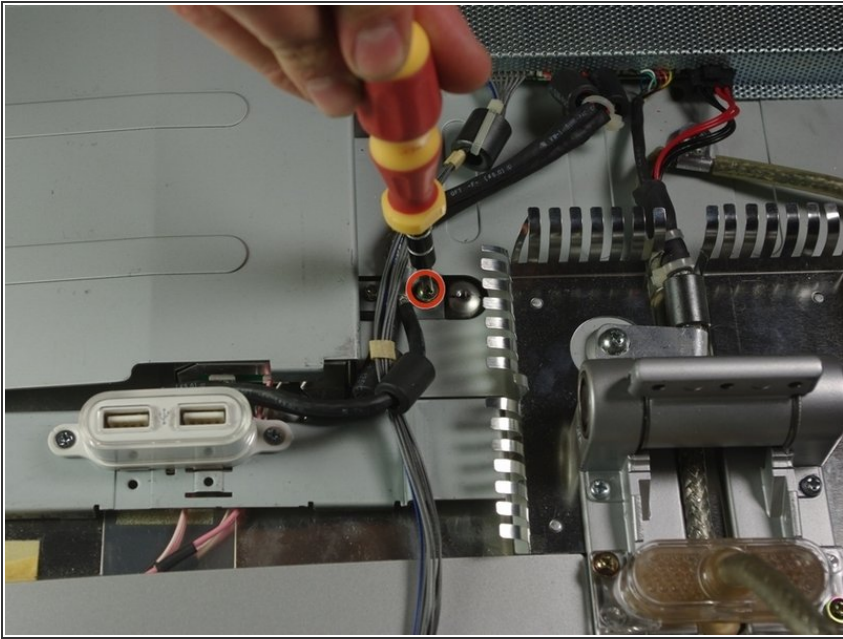
- Before starting, make sure the display is **UNPLUGGED**. Failure to do so can result in shock and serious injury.
- Flip the Cinema Display so it is on its face and the feet are pointed away from you.
- Using the PH 2 screwdriver, unscrew the three feet screws (9.52 x 4.43 mm).
- Remove the back foot from the hinge mount by gently pulling it upwards.

Step 2



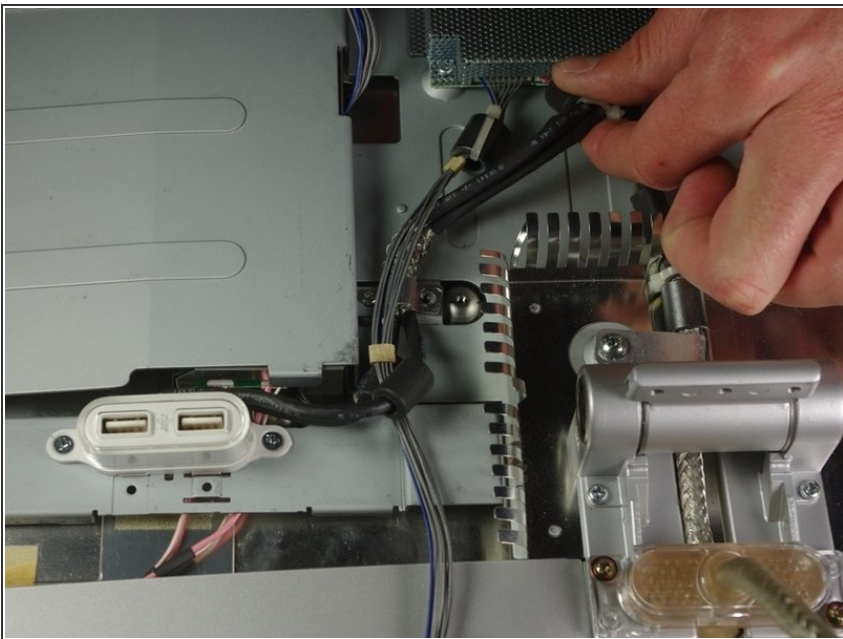
- Remove the back plate screws (5.25 x 4.43 mm) using the PH 2 screw driver.
- Once the screws are removed, lift the back plate off of the display.
- Completely remove the back plate and set it aside.

Step 3



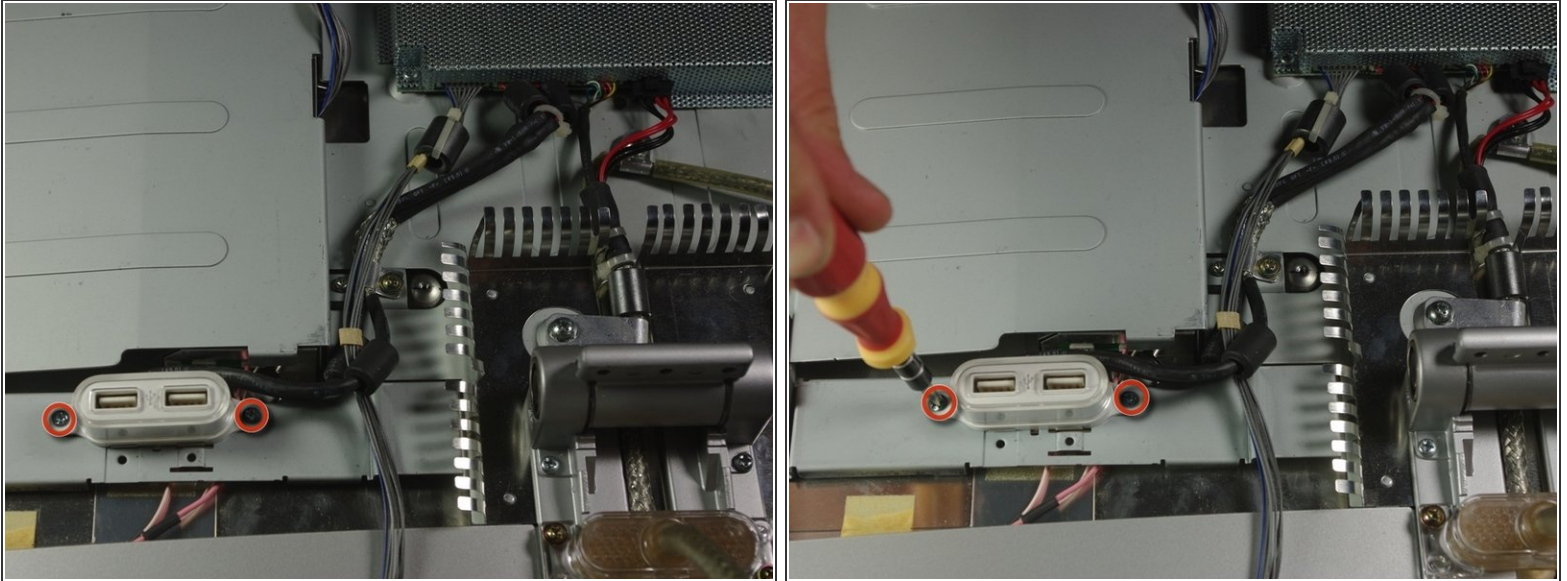
- Unscrew the USB cable routing screw (8 x 2.72mm) using the PH 2 screwdriver.

Step 4



- Unplug the USB cable connector from the screen box.

Step 5



- Using the PH 2 screwdriver, unscrew the two screws (4.85 x 2.94mm) on the USB ports.

To reassemble your device, follow these instructions in reverse order.