



# Accessing Apple Cinema Display M8149 Control Boards

Accessing Control Boards.

Written By: Brett Murphy



---

## INTRODUCTION

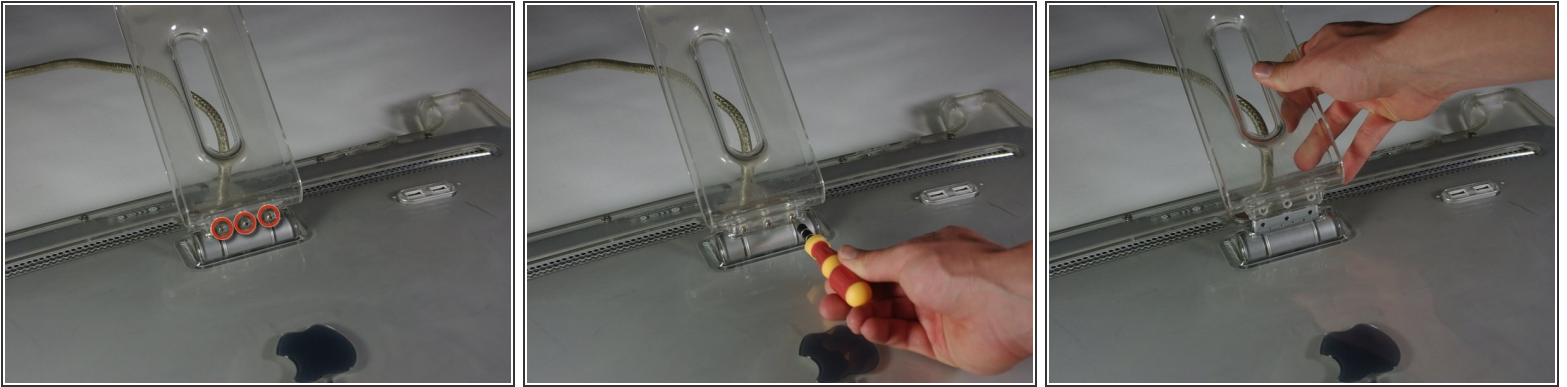
This guide will show you how to gain access to the LCD Control Board and the Backlight Control Board on an Apple Cinema Display M8149. The tools required for this section are the spudger and the PH 2 screwdriver.

---

### TOOLS:

- [Phillips #2 Screwdriver](#) (1)

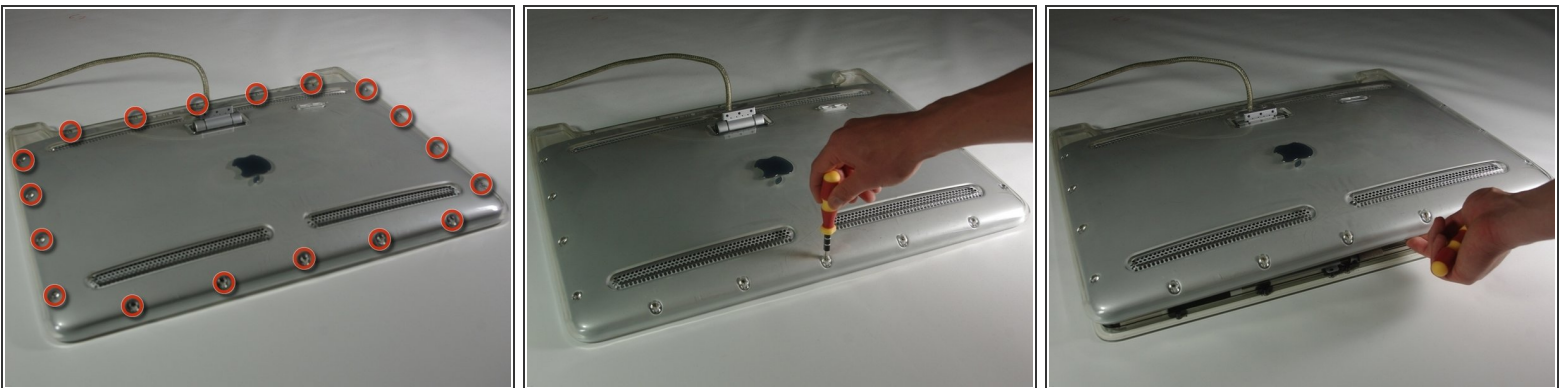
## Step 1 — Accessing Control Boards



**⚠** Before starting, make sure the display is UNPLUGGED. Failure to do so can result in shock and serious injury.

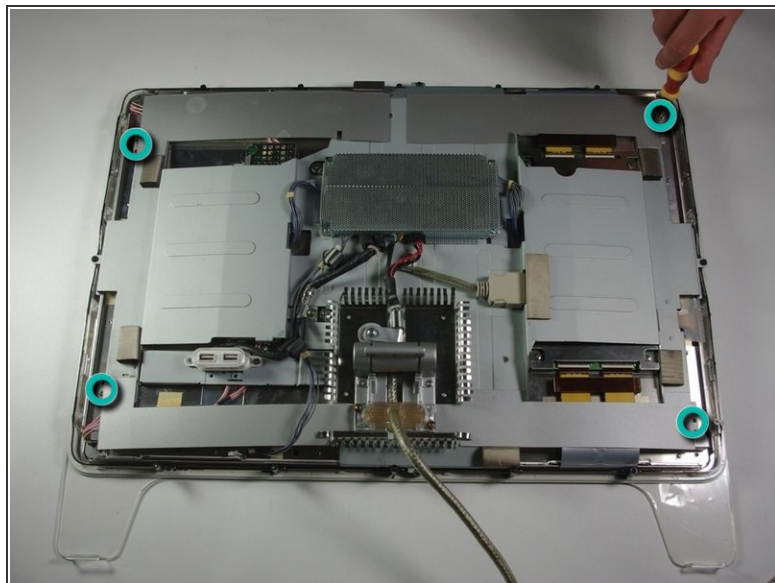
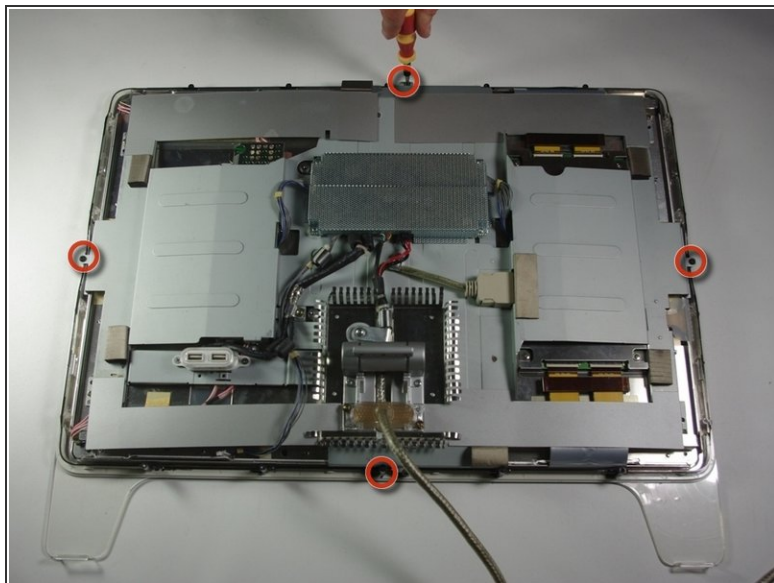
- Flip the Cinema Display so it is on its face and the feet are pointed away from you.
- Using the PH 2 screw driver, unscrew the three feet screws (9.52 x 4.43mm).
- Remove the back foot from the hinge mount by grabbing the foot and pulling upwards.

## Step 2



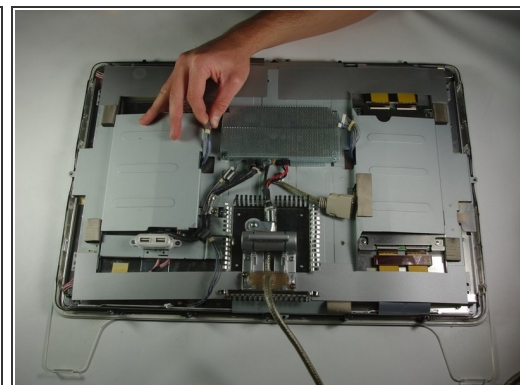
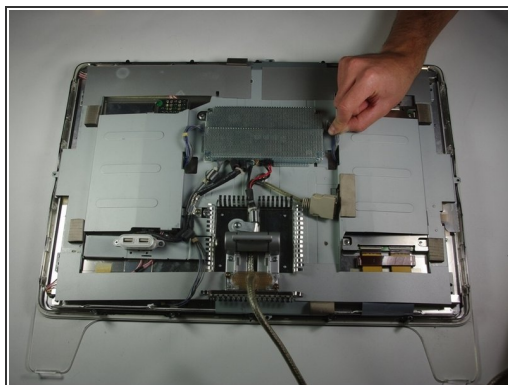
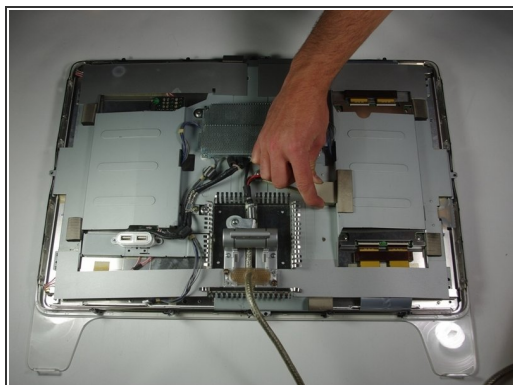
- Locate and remove the back plate screws (5.25 x 4.43 mm) using the PH 2 screw driver.
- Lift the back plate off of the display.
- Completely remove the back plate and set it aside.

### Step 3



- With the PH 2 screw driver, remove the four rim screws (9.52 x 3.43 mm) located on the outer rim of the metal cover.
- Next, unscrew the four cover screws (11.91 x 2.89 mm) using the PH 2 screwdriver.

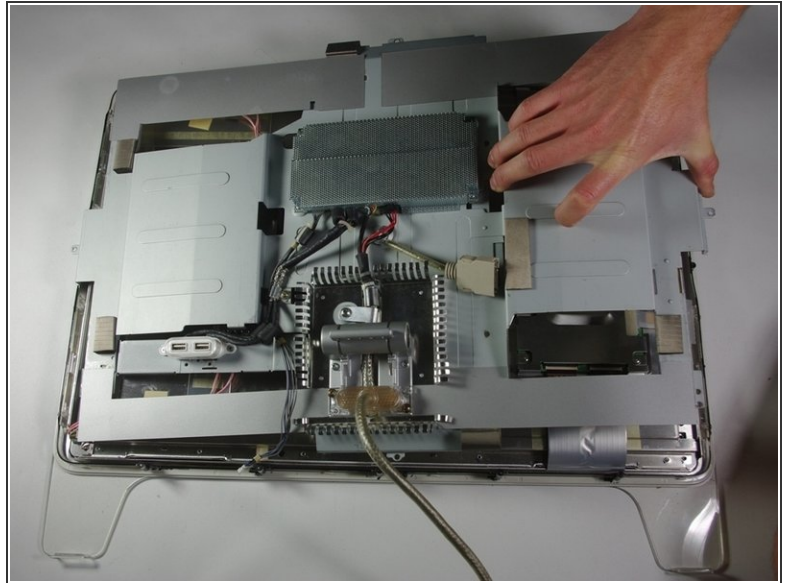
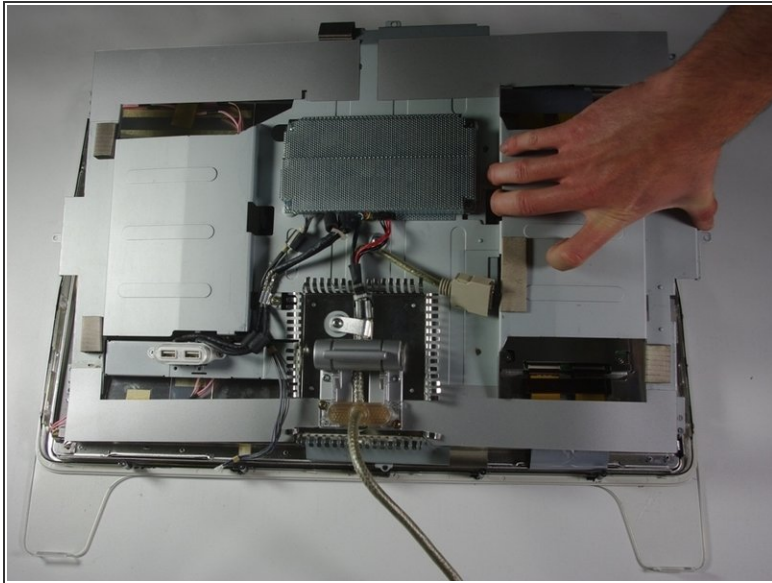
### Step 4



- Unplug the large plug that connects the control board to the rest of the display.
- Unplug the blue and gray plug on the right side of the control board.
- Unplug the blue and gray plug on the left side of the control board.



## Step 5



- Lift the large metal cover which spans across the whole display.

To reassemble your device, follow these instructions in reverse order.